

TRACT NO. 36-49 LA VISTA BLANC

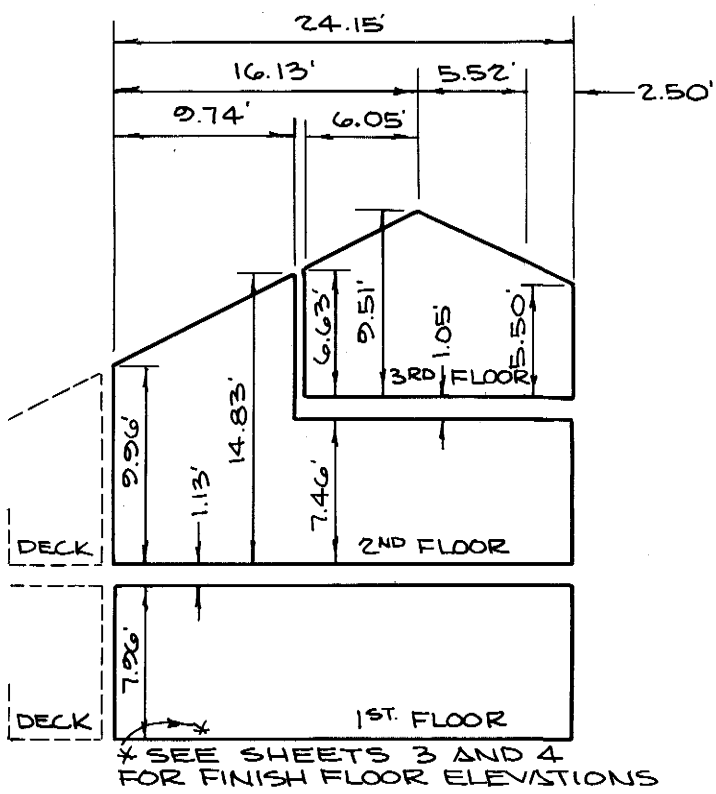
MONO COUNTY, CALIFORNIA

SEPTEMBER, 1972
WILLIAMSON & SCHMID, CIVIL ENGINEERS

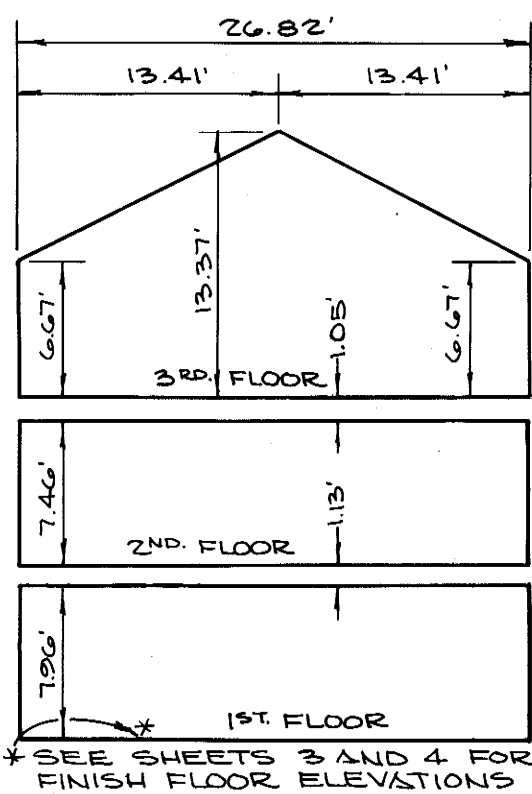
GERALD F. OLDENBURG, L.S. 3246

FOR CONDOMINIUM PURPOSES

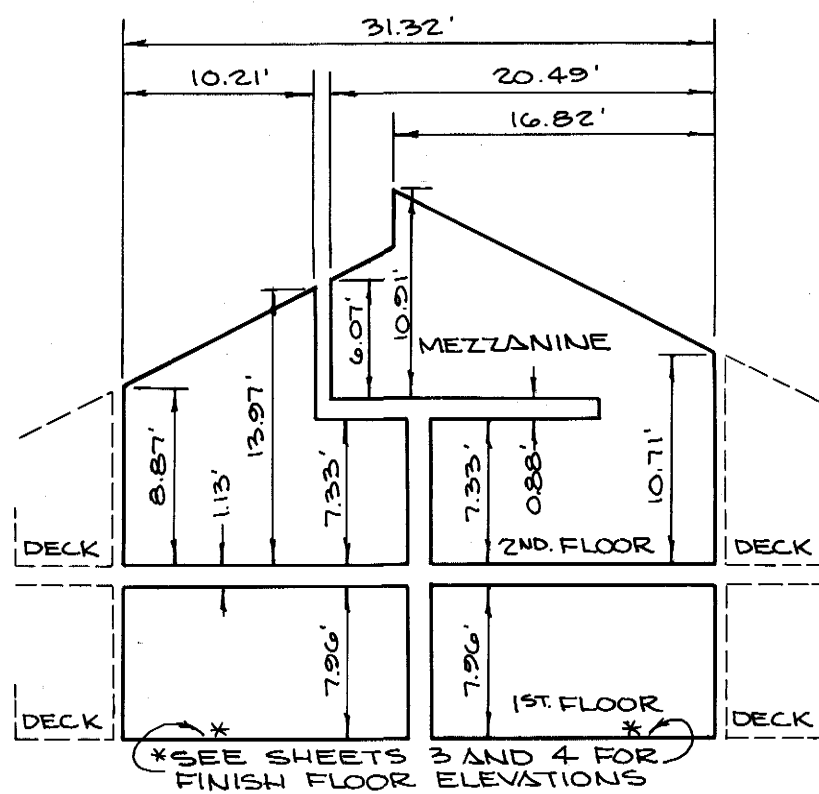
1 LOT AND 80 CONDOMINIUM UNITS
3.942 ACRES



TYPICAL SECTION A-A



TYPICAL SECTION B-B



TYPICAL SECTION C-C

NOTE:

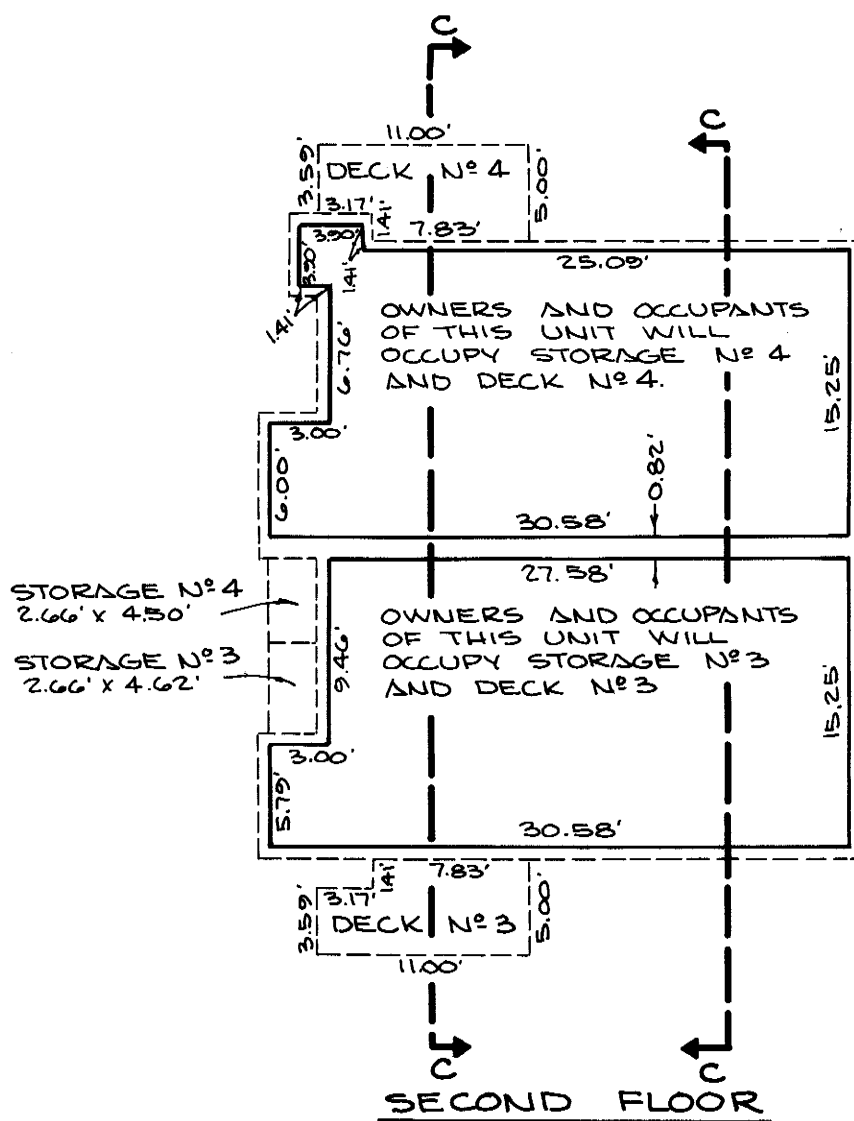
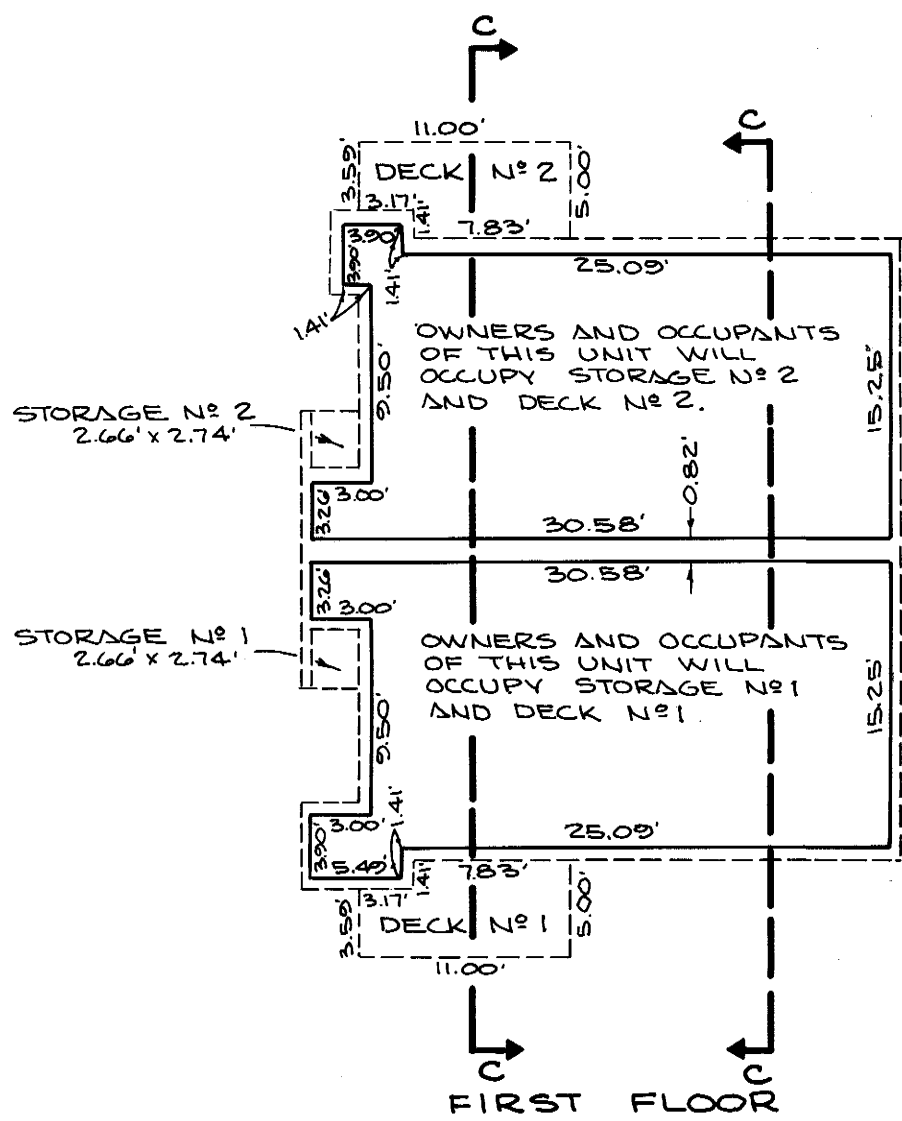
1. SECTION A-A IS TYPICAL FOR CASE I, CASE III, CASE IV AND CASE IV R
2. SECTION B-B IS TYPICAL FOR CASE I, CASE III, CASE IV AND CASE IV R
3. SECTION C-C IS TYPICAL FOR CASE II AND CASE V

GENERAL NOTES:

1. COMMON AREA IS DEFINED AS LOT 81.
2. THOSE PORTIONS OF COMMON AREA INDICATED "DECKS," "STORAGE" AND "PORCHES" ARE RESTRICTED COMMON AREAS FOR THE EXCLUSIVE USE OF THEIR RESPECTIVE UNITS.

NOTE:

1. THESE PLANS SHOWN ON SHEETS 9, 10 AND 11, REPRESENT TYPICAL BUILDINGS TO BE ERRECTED TO CONTAIN UNITS 1 TO 80, INCLUSIVE.
2. ALL LINES SHOWN HEREON INTERSECT AT RIGHT ANGLES.
3. ALL WALLS ARE 0.34' THICK, UNLESS OTHERWISE NOTED.



CASE V

