

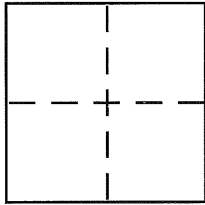
CORNER RECORD

Document Number CR 5822

City of BERKELEY

County of ALAMEDA, California

Brief Legal Description PARCEL A, PARCEL MAP 8765 (284 M. 56-57)



CORNER TYPE

Government Corner ☐ Control ☐
 Meander ☐ Property ☒
 Rancho ☐ Other ☐
 Date of Survey _____

COORDINATES (Optional)

N. _____
 E. _____
 Zone _____ NAD27 ☐ NAD83 ☐
 NAD83 Epoch _____
 Elev. _____
 Vert. Datum: NGVD29 ☐ NAVD88 ☐
 Meas. Units: Metric ☐ Imperial ☐

Corner – Left as found ☐ Found and tagged ☐ Established ☐ Reestablished ☒ Rebuilt ☐

Identification and type of corner found: Evidence used to identify or procedure used to establish or reestablish the corner:

FOUND MONUMENTS IN VICENTE ROAD AS SHOWN ON PARCEL
MAP 8765 (284 M. 56-57). SET PROPERTY LINE PER RECORD
DIMENSIONS AS SHOWN ON PARCEL MAP.

A description of the physical condition of the monument as found and as set or reset:

0 SET 5/8" REBAR WITH PLASTIC CAP, "FOSTER, L.S. 7170"

SURVEYOR'S STATEMENT

This Corner Record was prepared by me or under my direction in conformance with
 the Land Surveyor's Act on September 17, 2013

Signed Michael J. Foster P.L.S. or R.C.E. No. 7170

COUNTY SURVEYOR'S STATEMENT

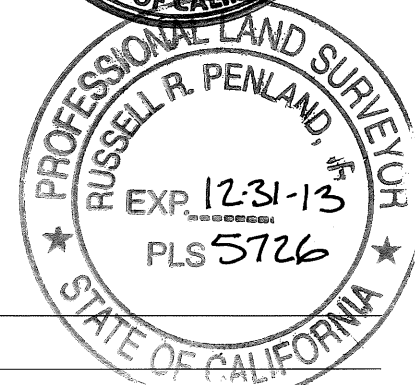
This Corner Record was received 9-17-2013

and examined and filed 10-7-13

Signed Russell R. Penland P.L.S. or R.C.E. No. 5726

Title COUNTY SURVEYOR

County Surveyor's Comment _____



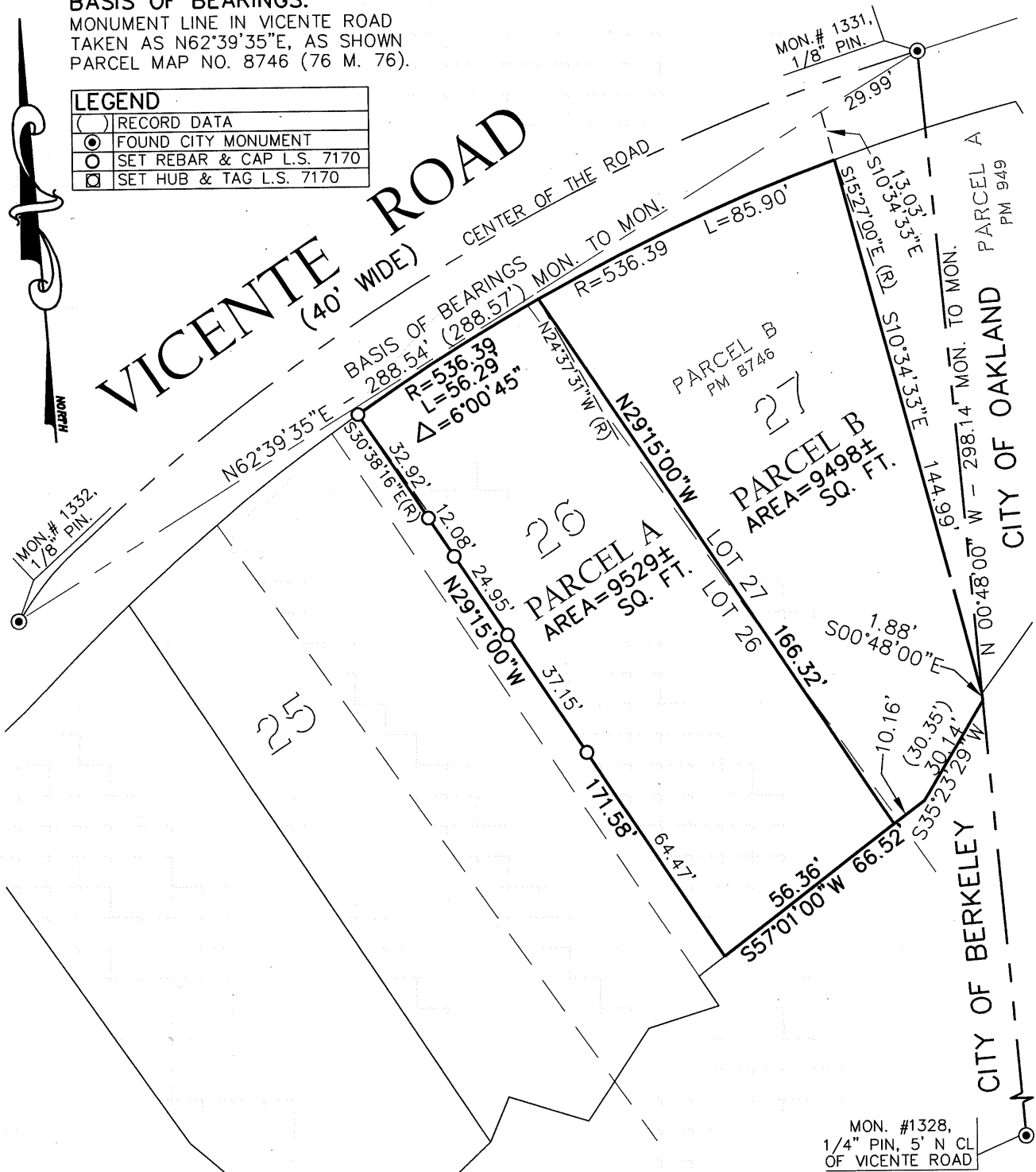
KP41D1

BASIS OF BEARINGS:

MONUMENT LINE IN VICENTE ROAD
TAKEN AS N62°39'35"E, AS SHOWN
PARCEL MAP NO. 8746 (76 M. 76).

LEGEND

()	RECORD DATA
●	FOUND CITY MONUMENT
○	SET REBAR & CAP L.S. 7170
□	SET HUB & TAG L.S. 7170



CORNER RECORD

PARCELS A & B, PARCEL MAP 8765 (284 M. 56-57)

CITY OF BERKELEY, ALAMEDA COUNTY, CALIFORNIA

SEPTEMBER, 2013 SCALE 1" = 40'

BAY AREA LAND SURVEYING INC.

961 MITCHELL WAY
EL SOBRANTE, CA 94803
(510) 223-5167