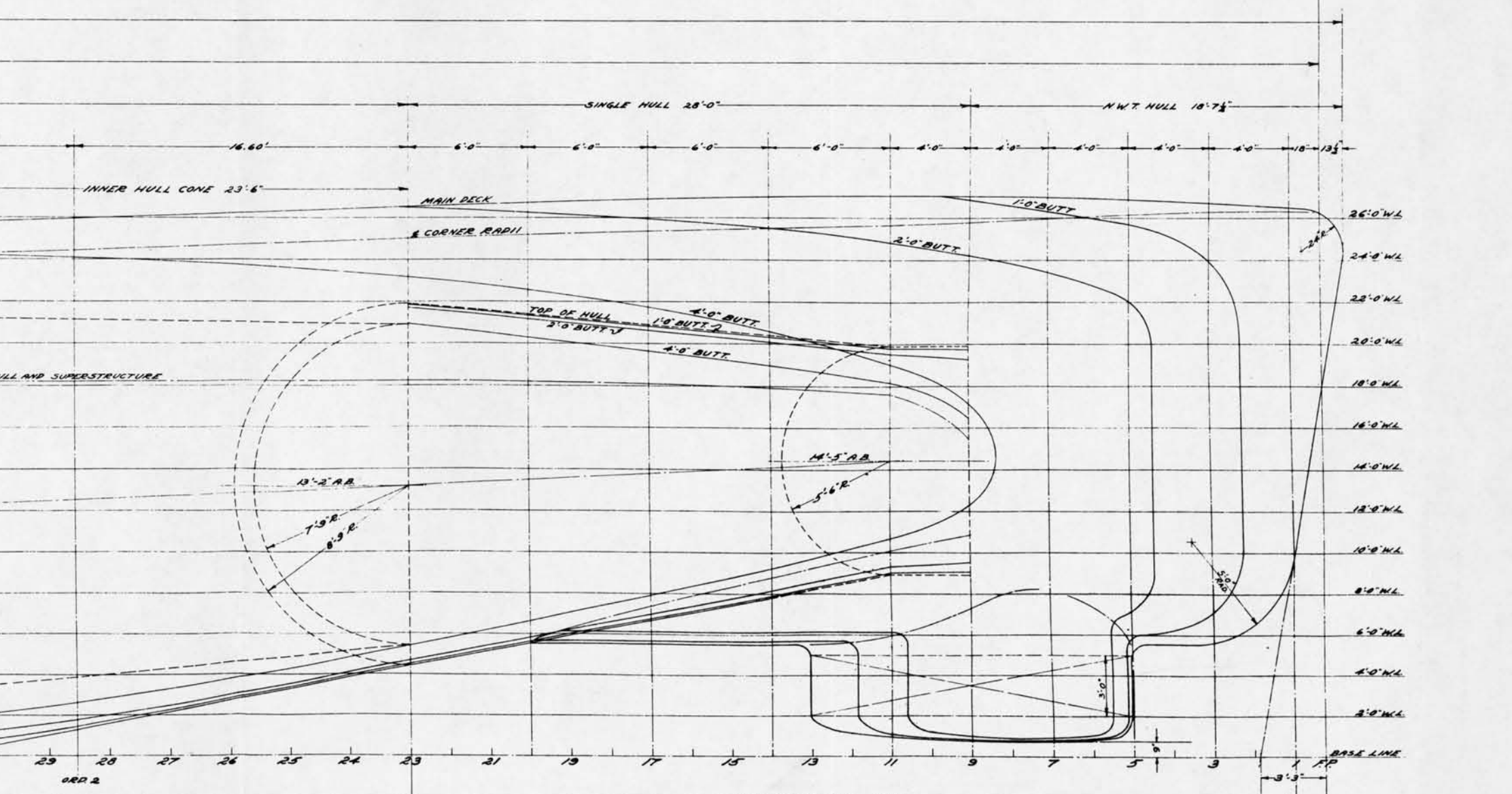
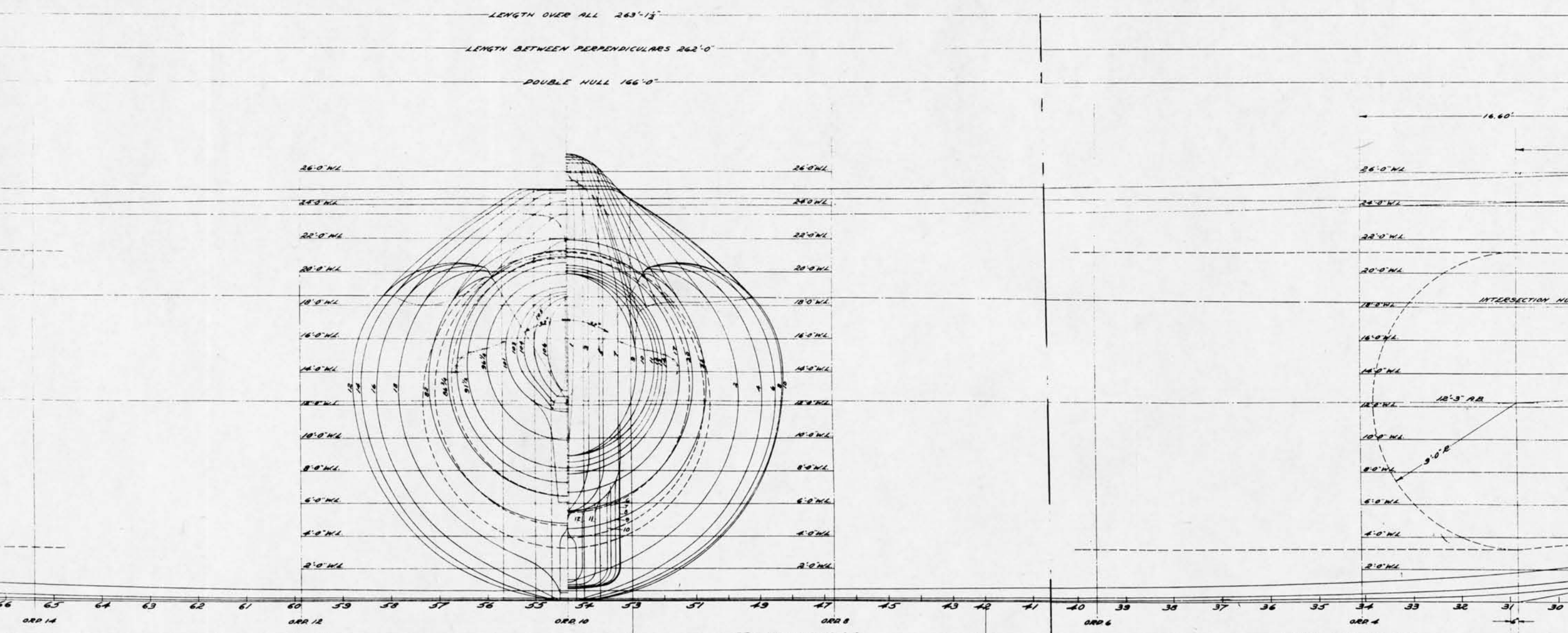
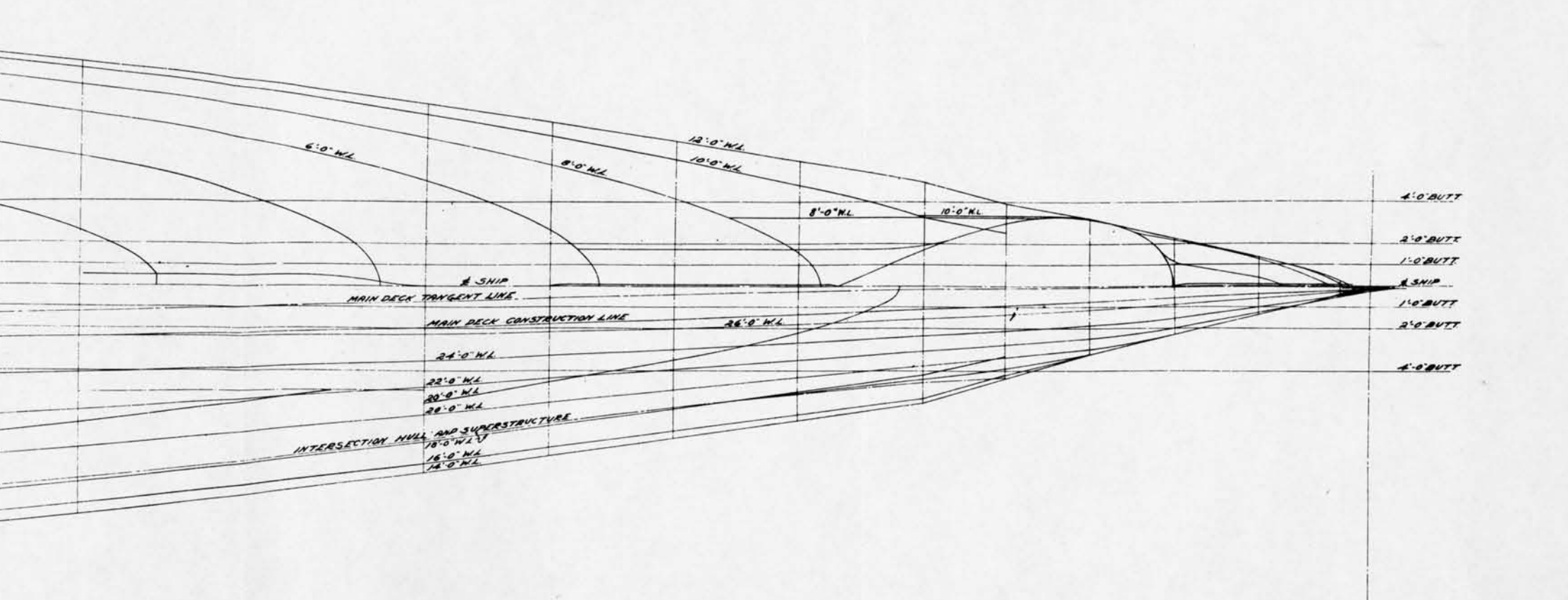


20+00
22+00
24+00
26+00
28+00
30+00
32+00
34+00
36+00
38+00
40+00
42+00
44+00
46+00
48+00
50+00
52+00
54+00
56+00
58+00
60+00
62+00
64+00
66+00
68+00
70+00
72+00
74+00
76+00
78+00
80+00
82+00
84+00
86+00
88+00
90+00
92+00
94+00
96+00
98+00
100+00

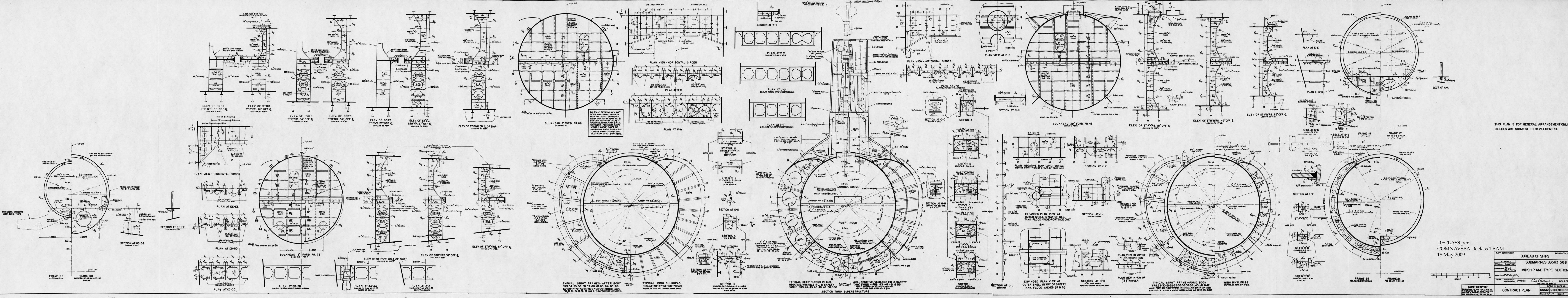
MAIN RACE TANGENT LINE
MAIN RACE CENTERLINE LINE
INTERSECTION HILL AND INFRASTRUCTURE
MAIN RACE TANGENT LINE



DECLASS per
COMNAVSEA Declass TEAM
18 May 2009

NAVY DEPARTMENT		BUREAU OF SHIPS
EXAMINED		SUBMARINES SS
OFFICIAL SIGNATURE		

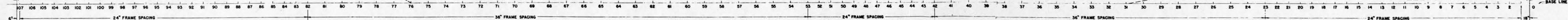
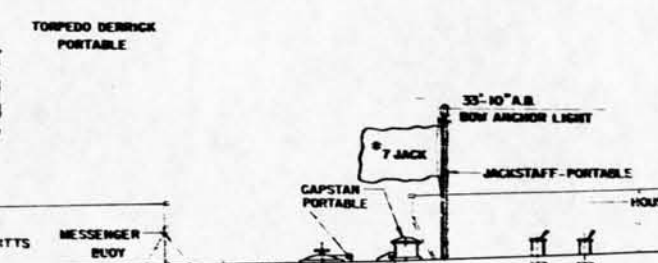
NAVY DEPARTMENT		BUREAU OF SHIPS		WASHINGTON, D.C.
EXAMINED		SUBMARINES SS563-56		
OFFICIAL	SIGNATURE	LINES AND MOLDED OFFSE		
SECTION	<i>[Signature]</i>			
HEAD				
REVIEWED	<i>[Signature]</i>			
DATE		APPROVED <i>[Signature]</i> DATE 2 FEB, 19		
SPECIAL		FOR CHIEF OF BUREAU		
HULL CONTRACT PLAN		BUREAU OF SHIPS NO.		
		SS563-56001 0199008		



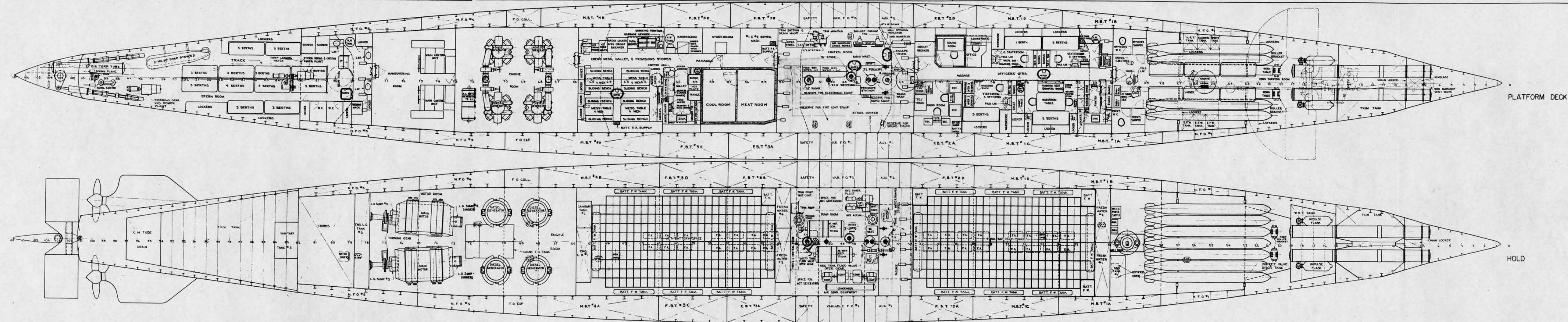
THIS PLAN IS FOR GENERAL ARRANGEMENT ONLY.
DETAILS ARE SUBJECT TO DEVELOPMENT.

DECLASS per
COMNAVSEA Declass TEAM
18 May 2009

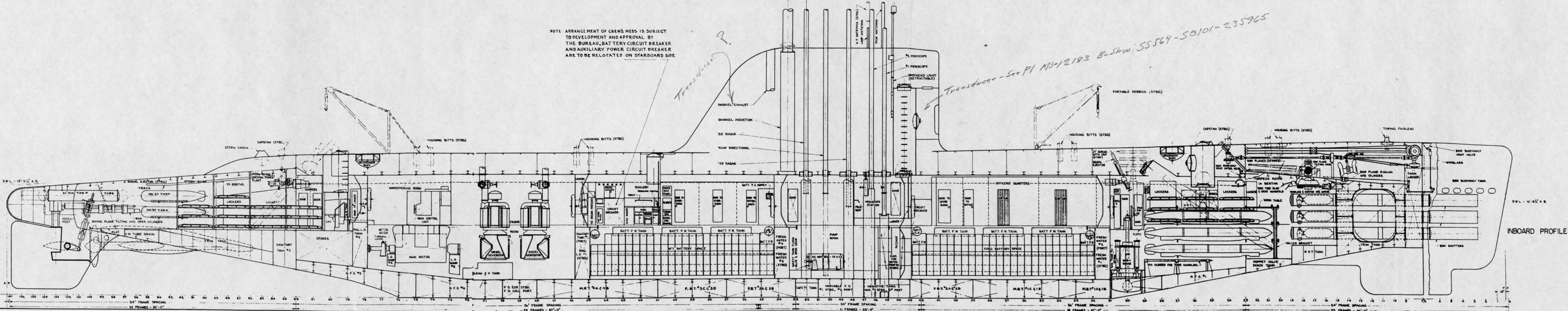
BUREAU OF SHIPS		WASHINGTON, D.C.
SUBMARINES SS563-566		
MIDSHIP AND TYPE SECTIONS		
EXAMINED	OFFICIAL	DATE
REVIEWED	DATE	DATE
APPROVED	DATE	DATE
CONTRACT PLAN		
SS563S001 919909JALT		
SCALE: 1/4" = 1'-0"		



~~CONFIDENTIAL~~
REVELATION OF THE CONTENTS OF
THIS DRAWING TO AN UNAUTHORIZED
PERSON IS PROHIBITED BY LAW
SEE ESPIONAGE ACT, 50 USC 31-32



THIS PLAN IS FOR GENERAL ARRANGEMENT ONLY.
DETAILS ARE SUBJECT TO DEVELOPMENT.
SEE CONTRACT & TYPE PLAN MODIFICATION LIST.



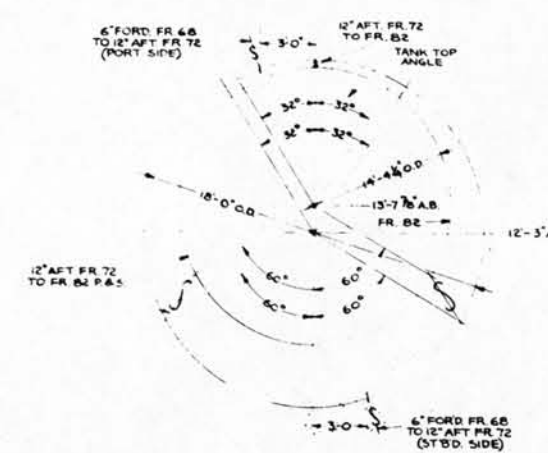
DECLASS per
COMNAVSEA Declass TEAM
18 May 2009

INBOARD PROFILE

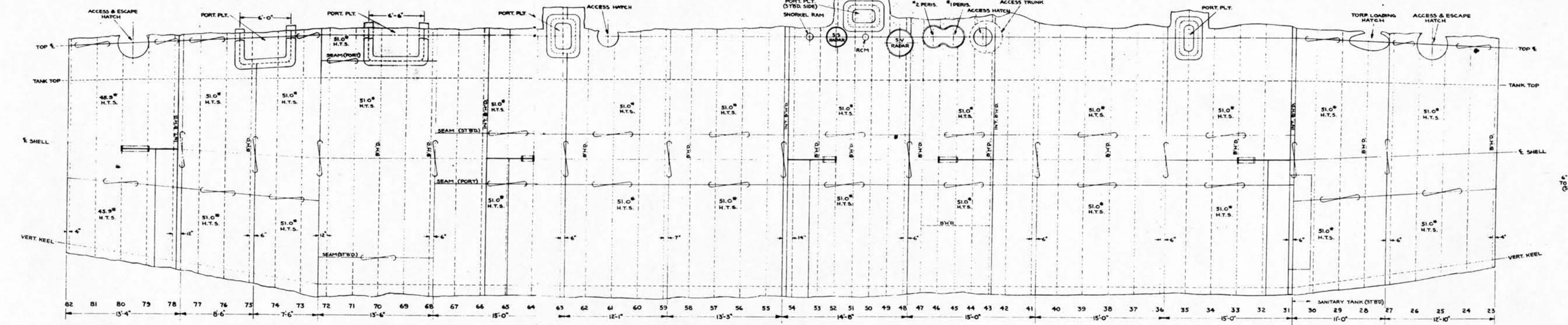


CONFIDENTIAL

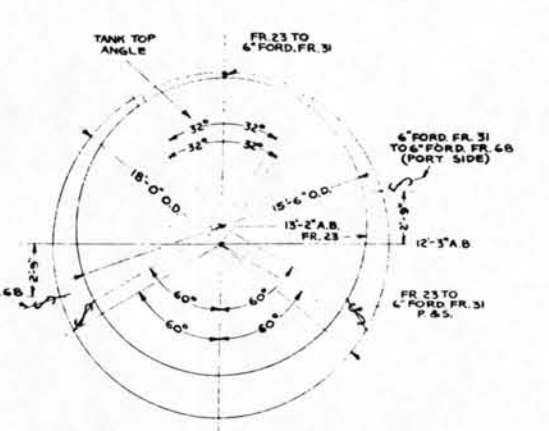
NAVY DEPARTMENT		BUREAU OF SHIPS		WASHINGTON, D.C.
EXAMINED		SUBMARINES SS563-566		
OFFICIAL SIGNATURE		INBOARD PROFILE & PLANS		
REVISION		DATE		
DRAWN		APPROVED		
CHECKED		DATE		
CONTRACT PLAN		SS563-50101-235965		ALT.
SCALE		1/4" = 1'-0"		SHEET



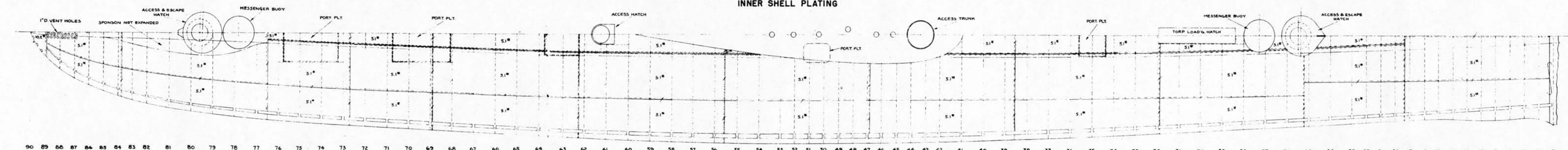
CROSS SECTION OF INNER SHELL
6" FOR'D. FR. 68 TO FR. 82



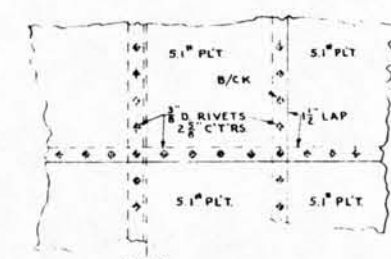
INNER SHELL PLATING



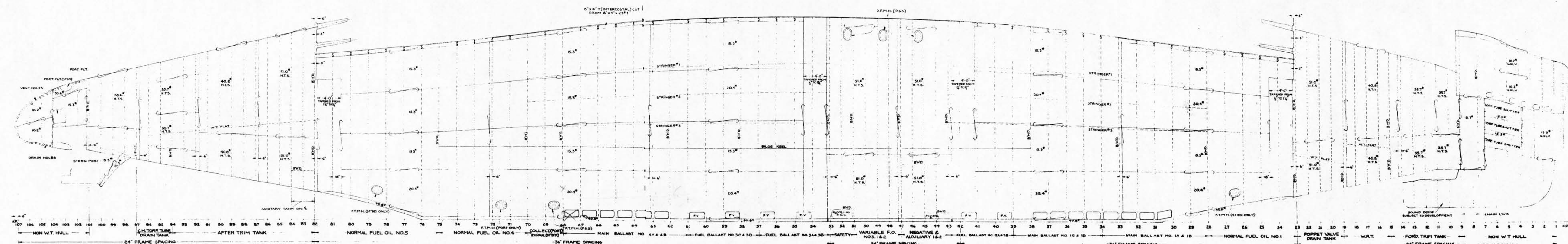
CROSS SECTION OF INNER SHELL
FR. 23 TO 6" FOR'D. FR. 68



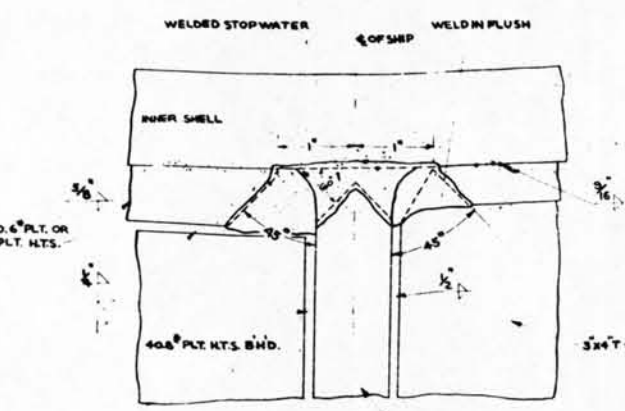
SUPERSTRUCTURE PLATING-DECK & SIDE



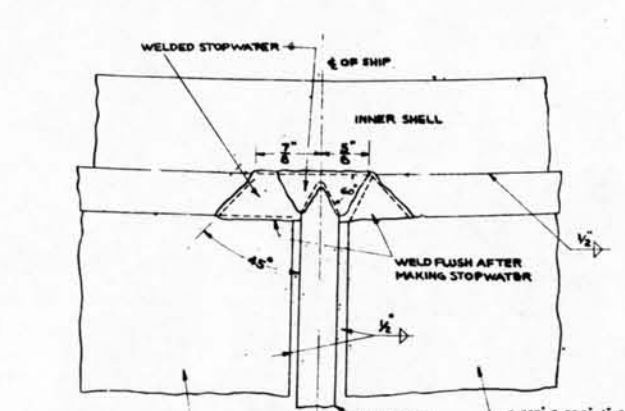
SUPERSTRUCTURE SIDE PLATING
TYPICAL RIVETING OF FRAMES, SEAMS
& BUTTS
SCALE - 1/2" = 1'-0"



OUTER SHELL PLATING

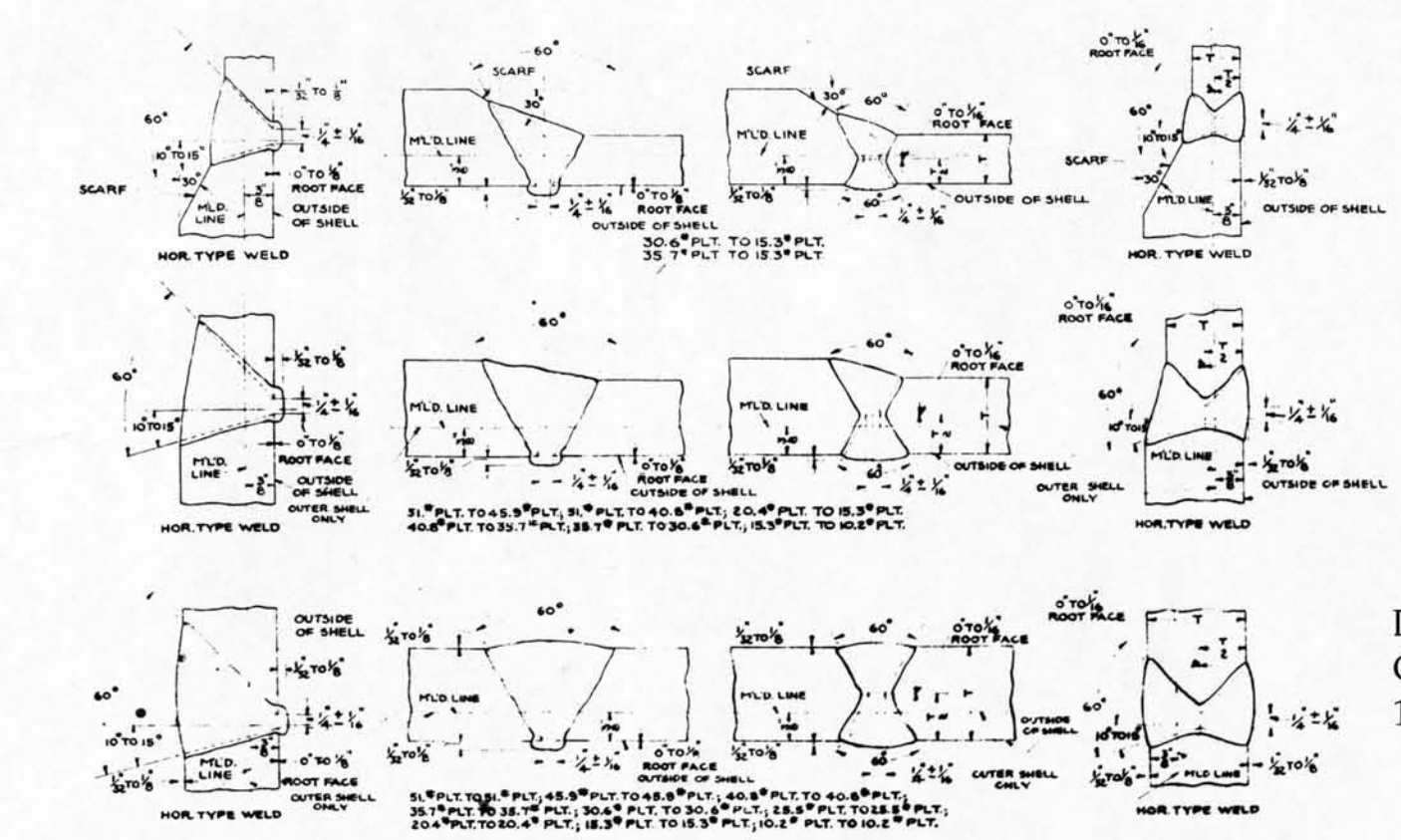


TYPICAL WELDED STOPWATER IN WAY OF
SAFETY, NEGATIVE & VAR. F.O. TANKS
WITH NEGATIVE TANK TOP



TYPICAL WELDED STOPWATER IN WAY OF
BALLAST & F.O. TANKS WITH VERT. KEEL

NOTE:-
UNTRAPPED WELDS THE ROOT OF THE WELD SHALL BE CHIPPED OUT TO SOUND CONTINUOUS METAL AFTER SEVERAL BEADS
OR LAYERS OF WELD METAL HAVE BEEN DEPOSITED AND BEFORE ANY WELDING ON THE OPPOSITE SIDE OF THE JOINT IS UNDER-
TAKEN. THE CHIPPING SHALL BE DONE WITH A ROUND BESS TOED TOOL HAVING A RADIUS OF NOT LESS THAN 1/8".
THE FIRST BEAD ON THE OPPOSITE SIDE SHALL BE DEPOSITED WITH A 1/8" DIA. ELECTRODE.
THE DOUBLE VEE WELD IS PREFERRED BUT THE SINGLE VEE WELD MAY BE USED IN SPECIAL CASES DUE TO INACCESSIBILITY.
SEAMS AND OTHER WELDS SHALL NOT BE GROUNDED EXCEPT WHERE DIRECTED BY THE HULL SUPERINTENDENT TO OBTAIN
REASONABLE SMOOTHNESS ON THE OUTSIDE.



GROOVE WELDS IN LONG'L & TRANSVERSE BUTT JOINTS
SCALE - 1/2" = 1'-0"

THIS PLAN IS FOR GENERAL ARRANGEMENT.
DETAILS ARE SUBJECT TO DEVELOPMENT.

DECLASS per
COMNAVSEA Declass TEAM
18 May 2009

NAVY DEPARTMENT
BUREAU OF SHIPS
WASHINGTON, D.C.

OFFICIAL SIGNATURE
RETURNED TO
REVIEWED BY
DATE 2 FEB 1958

BUREAU OF SHIPS
SUBMARINES SS563-566
INNER AND OUTER
SHELL EXPANSIONS

DATE 2 FEB 1958

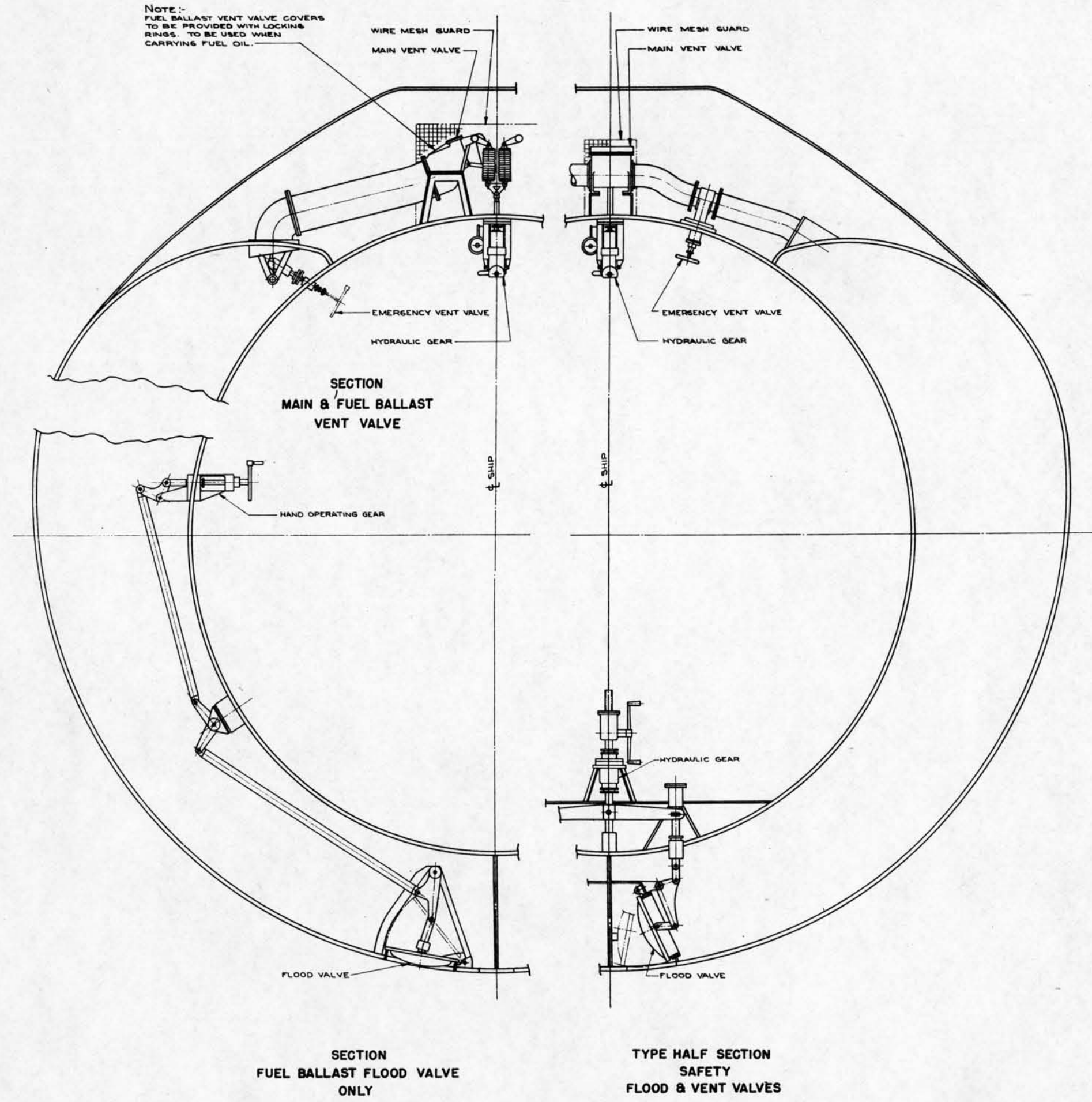
CONFIDENTIAL
REVELATION OF THE CONTENTS OF
THIS DRAWING TO AN UNAUTHORIZED
PERSON IS PROHIBITED BY LAW
SEE 15 U.S.C. 3001-3003

TYPE PLAN

SS563 50101 919912 [ALT]

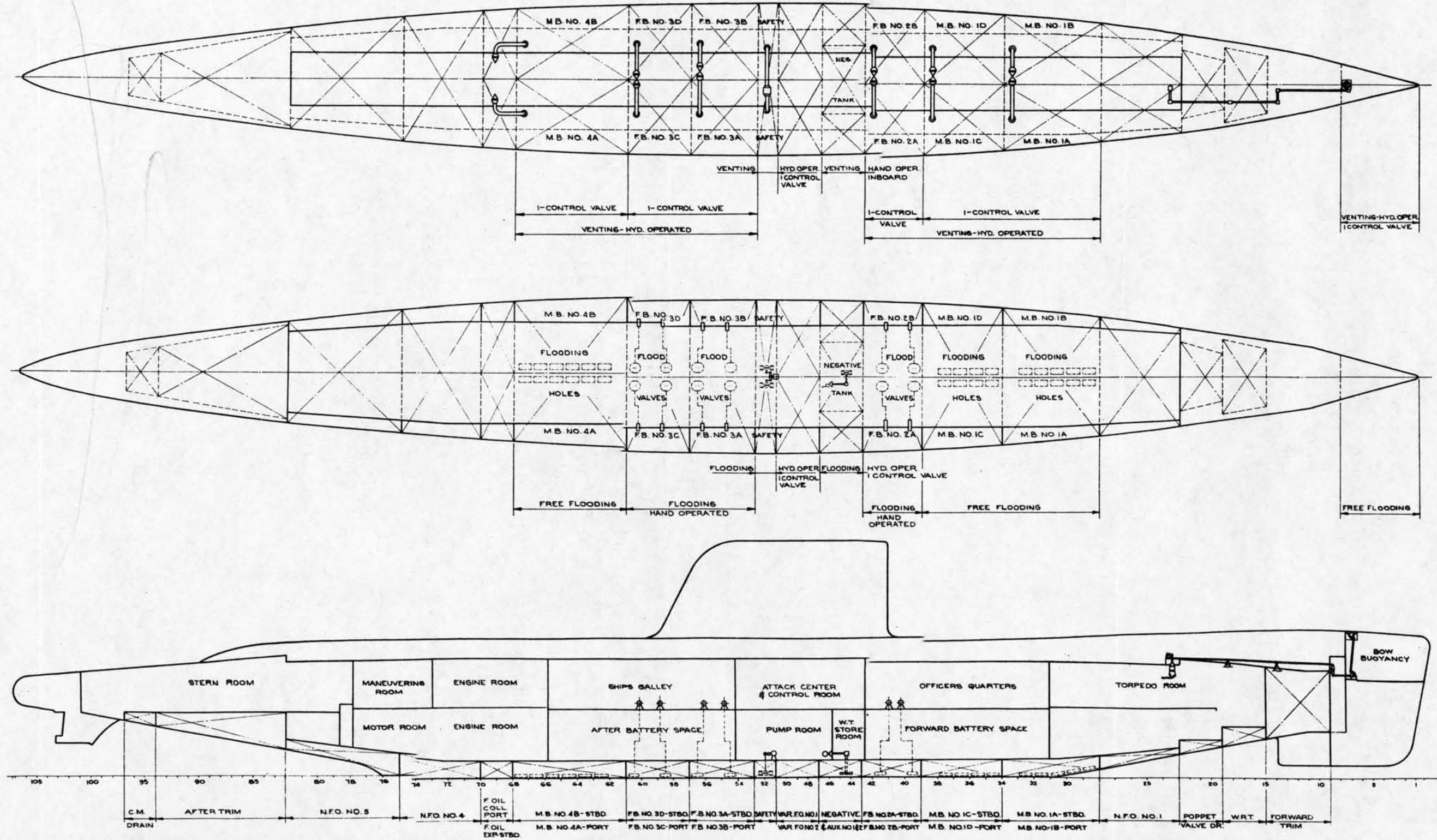
SCALE - 1/2" = 1'-0"

SHEET OF



MAIN BALLAST	1A-1B	1C-1D	2A-2B	3A-3B	3C-3D	4A-4B	SAFETY	BOW BUOYANCY	NEGATIVE
	ONE SIDE					BOTH SIDES			
TANK CAPACITY (TONS-SEA WATER)	28.615	31.97	28.615	33.07	29.855	47.325	21.62	9.11	11.46
FLOODING AREA (SQ. FT.)	12.78	12.78	10.28	10.28	10.28	13.25	772	FREE FLOODING	14
RATIO-FLOODING AREA TO VOLUME	.446	.399	.359	.305	.344	.279	.957	—	.120
VENT PIPE AREA-SQ. FT. (ONE SIDE ONLY)	.852	.852	.852	.852	.852	.852	.518	.601	.116
EMERGENCY VENT VALVE DIAMETER	12 1/2	12 1/2	12 1/2	12 1/2	12 1/2	12 1/2	2 VALVES	—	2 VALVES
RATCHET VALVE AREA TO FLOODING AREA	.0666	.0666	.0628	.0628	.0628	.0643	.0811	—	.0828
RATIO-VENT VALVE AREA TO CAPACITY	.0297	.0266	.0297	.0253	.0253	.018	.0239	.046	.01
MASTER VENT VALVE (INSIDE DIAMETER)	12 1/2	12 1/2	12 1/2	12 1/2	12 1/2	12 1/2	9 1/2	10 1/2	4 1/2
NO. OF MASTER VENT VALVES	2	2	2	2	2	2	1	1	1
TOTAL NUMBER OF MASTER VENT VALVES	4					6			
NUMBER OF OPERATING GEARS	1	1	1	1	1	2	1	1	—
	FREE FLOODING					FREE FLOODING			

NOTE:- SAFETY AND NEGATIVE TANK FLOOD VALVES AND ALL MASTER VENT VALVES TO BE OPERATED HYDRAULICALLY FROM THE CONTROL ROOM AND LOCALLY BY HAND. NEGATIVE TANK VENT TO BE INBOARD AND TO BE OPERATED LOCALLY BY HAND.



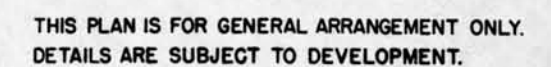
THIS PLAN IS FOR GENERAL ARRANGEMENT AND IS SUBJECT TO ANY NECESSARY MODIFICATIONS OR ADDITIONS IN THE DEVELOPMENT OF THE DETAILS.

DECLASS per COMNAVSEA Declass TEAM 18 May 2009

NAVY DEPARTMENT		WASHINGTON, D.C.	
BUREAU OF SHIPS		SUBMARINES SS563-566	
EXAMINED		MAIN BALLAST	
OFFICIAL SIGNATURE		FLOODING & VENTING	
SECTION HEAD		DIAGRAM	
REVIEWED		DATE 2 FEB 1948	
DRAWN		APPROVED	
FOR CHIEF OF BUREAU		BUREAU OF SHIPS NO.	
TYPE PLAN		SS563 50101 919913	
SCALE		SHEET OF	

CONFIDENTIAL
REVELATION OF THE CONTENTS OF THIS DRAWING TO AN UNAUTHORIZED PERSON IS PROHIBITED BY LAW
SEE ESPIONAGE ACT, 50 USC 31-36

A schematic diagram showing a shore charging connection. A cable runs from a 'SHORE CHARGING CORD' on the 'MAIN DECK' down through a 'STRAINER' to the 'PRESS HULL'. The cable then runs horizontally to the 'PERISCOPE FAIRWATER' and turns vertically down to a connection point labeled with a circled '16'.



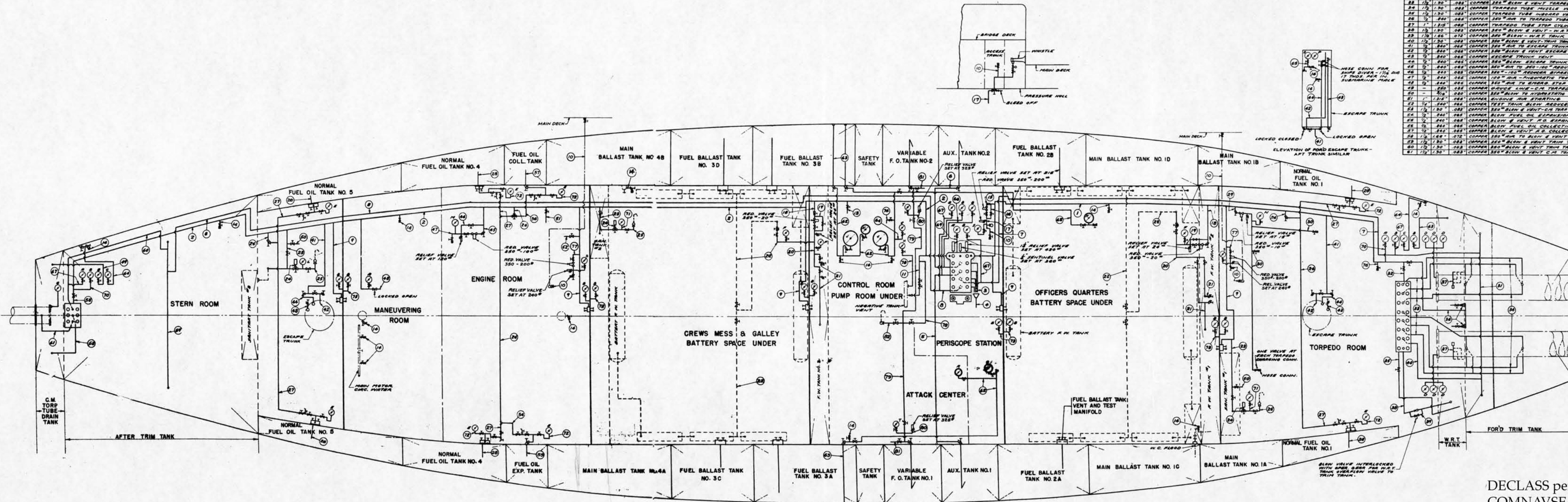
CONFIDENTIAL
REVELATION OF THE CONTENTS OF
THIS DRAWING TO AN UNAUTHORIZED
PERSON IS PROHIBITED BY LAW.
SEE ESPIONAGE ACT, 50 USC 21-32

NAVY DEPARTMENT		WASHINGTON, D. C.	
BUREAU OF SHIPS			
EXAMINED		SUBMARINES SS563 - 566	
OFFICIAL	SIGNATURE		
ENTER NAME	<i>H. D. Brown</i>	3000' AIR SYSTEM	
REMARKS	<i>See 7th Page</i>		
DATE	NOT NOTED REMARKS, E. E.	APPROVED	DATE
		<i>C. E. Brown</i>	2 FEB. 1918
		FOR CHIEF OF BUREAU	
		BUREAU OF SHIPS NO.	
TYPE PLAN		SS563	
		SOON 919914 Alt.	
		SCALE-	SHEET OF

MARK NO.	REQ.	DIAM.	SYSTEM	SERVICE	READING	H. HAND
A	1	2 1/2"	AIR	AIR SERVICE	0-600"	325"
B	1	2 1/2"	AIR	COMPARTMENTS & VARIABLE TANKS	0-600"	325"
C	1	2 1/2"	WATER	SEA PRESSURE	0-600"	325"
D	1	2 1/2"	WATER	TORPEDO TUBES	0-600"	325"
E	1	2 1/2"	AIR	FUEL OIL TANKS	0-600"	325"
F	1	2 1/2"	AIR	FRESH WATER	0-600"	325"
G	1	2 1/2"	WATER	C.M. TORPEDO TUBE	0-600"	325"
H	1	2 1/2"	AIR	WATER TANK	0-600"	325"
I	1	2 1/2"	WATER	DEPTH GAUGE - CONTROL ROOM	0-600"	325"
J	1	2 1/2"	WATER	DEPTH GAUGE - C.R. & C.O. AT RN	0-600"	325"
K	1	2 1/2"	AIR	SAFETY TANKS	0-600"	325"
L	1	2 1/2"	AIR	SAFETY TANKS	0-600"	325"
M	1	2 1/2"	AIR	SAFETY TANKS	0-600"	325"
N	1	2 1/2"	AIR	SAFETY TANKS	0-600"	325"
O	1	2 1/2"	AIR	SAFETY TANKS	0-600"	325"
P	1	2 1/2"	AIR	SAFETY TANKS	0-600"	325"
Q	1	2 1/2"	AIR	SAFETY TANKS	0-600"	325"
R	1	2 1/2"	AIR	SAFETY TANKS	0-600"	325"
S	1	2 1/2"	AIR	SAFETY TANKS	0-600"	325"
T	1	2 1/2"	AIR	SAFETY TANKS	0-600"	325"

MARK	SIZE	O.D.	THICK.	MATL.	SERVICE	TEST
1	1/2"	1.315"	.078"	COPPER	SEA LINE - DEPTH GAUGE	325"
2	1/2"	1.315"	.078"	COPPER	SEA LINE - DEPTH GAUGE	325"
3	1/2"	1.315"	.078"	COPPER	SEA LINE - SEA PRESSURE GAUGE	325"
4	1/2"	1.315"	.078"	COPPER	SEA LINE - SEA PRESSURE GAUGE	325"
5	1/2"	1.315"	.078"	COPPER	SEA LINE - SEA PRESSURE GAUGE	325"
6	1/2"	1.315"	.078"	COPPER	SEA LINE - SEA PRESSURE GAUGE	325"
7	1/2"	1.315"	.078"	COPPER	SEA LINE - SEA PRESSURE GAUGE	325"
8	1/2"	1.315"	.078"	COPPER	SEA LINE - SEA PRESSURE GAUGE	325"
9	1/2"	1.315"	.078"	COPPER	SEA LINE - SEA PRESSURE GAUGE	325"
10	1/2"	1.315"	.078"	COPPER	SEA LINE - SEA PRESSURE GAUGE	325"
11	1/2"	1.315"	.078"	COPPER	SEA LINE - SEA PRESSURE GAUGE	325"
12	1/2"	1.315"	.078"	COPPER	SEA LINE - SEA PRESSURE GAUGE	325"
13	1/2"	1.315"	.078"	COPPER	SEA LINE - SEA PRESSURE GAUGE	325"
14	1/2"	1.315"	.078"	COPPER	SEA LINE - SEA PRESSURE GAUGE	325"
15	1/2"	1.315"	.078"	COPPER	SEA LINE - SEA PRESSURE GAUGE	325"
16	1/2"	1.315"	.078"	COPPER	SEA LINE - SEA PRESSURE GAUGE	325"
17	1/2"	1.315"	.078"	COPPER	SEA LINE - SEA PRESSURE GAUGE	325"
18	1/2"	1.315"	.078"	COPPER	SEA LINE - SEA PRESSURE GAUGE	325"
19	1/2"	1.315"	.078"	COPPER	SEA LINE - SEA PRESSURE GAUGE	325"
20	1/2"	1.315"	.078"	COPPER	SEA LINE - SEA PRESSURE GAUGE	325"
21	1/2"	1.315"	.078"	COPPER	SEA LINE - SEA PRESSURE GAUGE	325"
22	1/2"	1.315"	.078"	COPPER	SEA LINE - SEA PRESSURE GAUGE	325"
23	1/2"	1.315"	.078"	COPPER	SEA LINE - SEA PRESSURE GAUGE	325"
24	1/2"	1.315"	.078"	COPPER	SEA LINE - SEA PRESSURE GAUGE	325"
25	1/2"	1.315"	.078"	COPPER	SEA LINE - SEA PRESSURE GAUGE	325"
26	1/2"	1.315"	.078"	COPPER	SEA LINE - SEA PRESSURE GAUGE	325"
27	1/2"	1.315"	.078"	COPPER	SEA LINE - SEA PRESSURE GAUGE	325"
28	1/2"	1.315"	.078"	COPPER	SEA LINE - SEA PRESSURE GAUGE	325"
29	1/2"	1.315"	.078"	COPPER	SEA LINE - SEA PRESSURE GAUGE	325"
30	1/2"	1.315"	.078"	COPPER	SEA LINE - SEA PRESSURE GAUGE	325"
31	1/2"	1.315"	.078"	COPPER	SEA LINE - SEA PRESSURE GAUGE	325"
32	1/2"	1.315"	.078"	COPPER	SEA LINE - SEA PRESSURE GAUGE	325"

MARK	SIZE	O.D.	THICK.	MATL.	SERVICE	TEST
1	1/2"	1.315"	.078"	COPPER	SEA LINE - DEPTH GAUGE	325"
2	1/2"	1.315"	.078"	COPPER	SEA LINE - DEPTH GAUGE	325"
3	1/2"	1.315"	.078"	COPPER	SEA LINE - SEA PRESSURE GAUGE	325"
4	1/2"	1.315"	.078"	COPPER	SEA LINE - SEA PRESSURE GAUGE	325"
5	1/2"	1.315"	.078"	COPPER	SEA LINE - SEA PRESSURE GAUGE	325"
6	1/2"	1.315"	.078"	COPPER	SEA LINE - SEA PRESSURE GAUGE	325"
7	1/2"	1.315"	.078"	COPPER	SEA LINE - SEA PRESSURE GAUGE	325"
8	1/2"	1.315"	.078"	COPPER	SEA LINE - SEA PRESSURE GAUGE	325"
9	1/2"	1.315"	.078"	COPPER	SEA LINE - SEA PRESSURE GAUGE	325"
10	1/2"	1.315"	.078"	COPPER	SEA LINE - SEA PRESSURE GAUGE	325"
11	1/2"	1.315"	.078"	COPPER	SEA LINE - SEA PRESSURE GAUGE	325"
12	1/2"	1.315"	.078"	COPPER	SEA LINE - SEA PRESSURE GAUGE	325"
13	1/2"	1.315"	.078"	COPPER	SEA LINE - SEA PRESSURE GAUGE	325"
14	1/2"	1.315"	.078"	COPPER	SEA LINE - SEA PRESSURE GAUGE	325"
15	1/2"	1.315"	.078"	COPPER	SEA LINE - SEA PRESSURE GAUGE	325"
16	1/2"	1.315"	.078"	COPPER	SEA LINE - SEA PRESSURE GAUGE	325"
17	1/2"	1.315"	.078"	COPPER	SEA LINE - SEA PRESSURE GAUGE	325"
18	1/2"	1.315"	.078"	COPPER	SEA LINE - SEA PRESSURE GAUGE	325"
19	1/2"	1.315"	.078"	COPPER	SEA LINE - SEA PRESSURE GAUGE	325"
20	1/2"	1.315"	.078"	COPPER	SEA LINE - SEA PRESSURE GAUGE	325"
21	1/2"	1.315"	.078"	COPPER	SEA LINE - SEA PRESSURE GAUGE	325"
22	1/2"	1.315"	.078"	COPPER	SEA LINE - SEA PRESSURE GAUGE	325"
23	1/2"	1.315"	.078"	COPPER	SEA LINE - SEA PRESSURE GAUGE	325"
24	1/2"	1.315"	.078"	COPPER	SEA LINE - SEA PRESSURE GAUGE	325"
25	1/2"	1.315"	.078"	COPPER	SEA LINE - SEA PRESSURE GAUGE	325"
26	1/2"	1.315"	.078"	COPPER	SEA LINE - SEA PRESSURE GAUGE	325"
27	1/2"	1.315"	.078"	COPPER	SEA LINE - SEA PRESSURE GAUGE	325"
28	1/2"	1.315"	.078"	COPPER	SEA LINE - SEA PRESSURE GAUGE	325"
29	1/2"	1.315"	.078"	COPPER	SEA LINE - SEA PRESSURE GAUGE	325"
30	1/2"	1.315"	.078"	COPPER	SEA LINE - SEA PRESSURE GAUGE	325"
31	1/2"	1.315"	.078"	COPPER	SEA LINE - SEA PRESSURE GAUGE	325"
32	1/2"	1.315"	.078"	COPPER	SEA LINE - SEA PRESSURE GAUGE	325"



THIS PLAN IS FOR GENERAL ARRANGEMENT ONLY.
DETAILS ARE SUBJECT TO DEVELOPMENT.

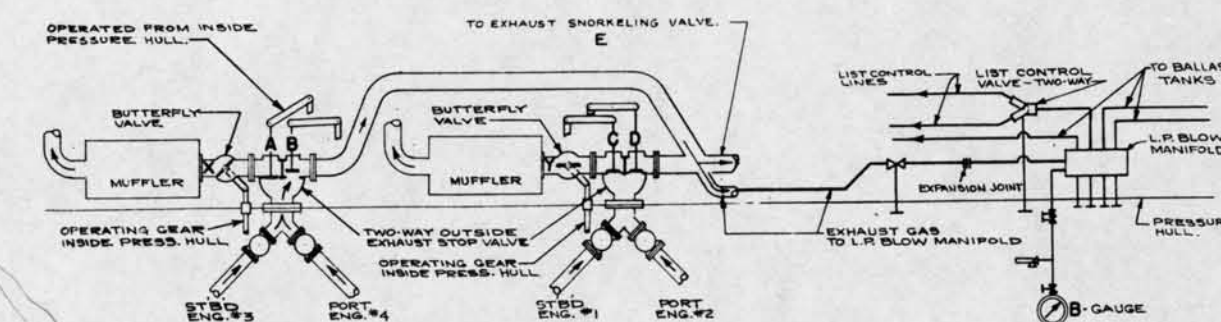
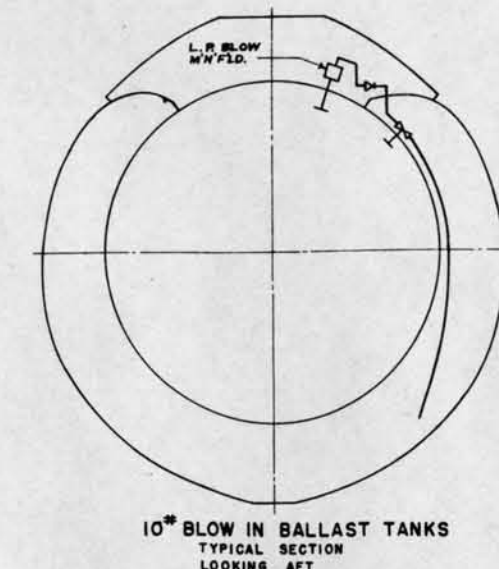
DECLASS per
COMNAVSEA Declass TEAM
18 May 2009

NAVY DEPARTMENT		WASHINGTON, D. C.	
BUREAU OF SHIPS		SUBMARINES SS563 - 566	
350° AIR SYSTEM		DIAGRAM	
DATE 2 FEB 1948		FOR CHIEF OF BUREAU	
CONFIDENTIAL		REVELATION OF THE CONTENTS OF THIS DRAWING TO AN UNAUTHORIZED PERSON IS PROHIBITED BY LAW. (SEC. 5052, U.S.C.)	
TYPE PLAN		SS563 50101 919915 AIR	
SCALE		SHEET 1 OF 1	

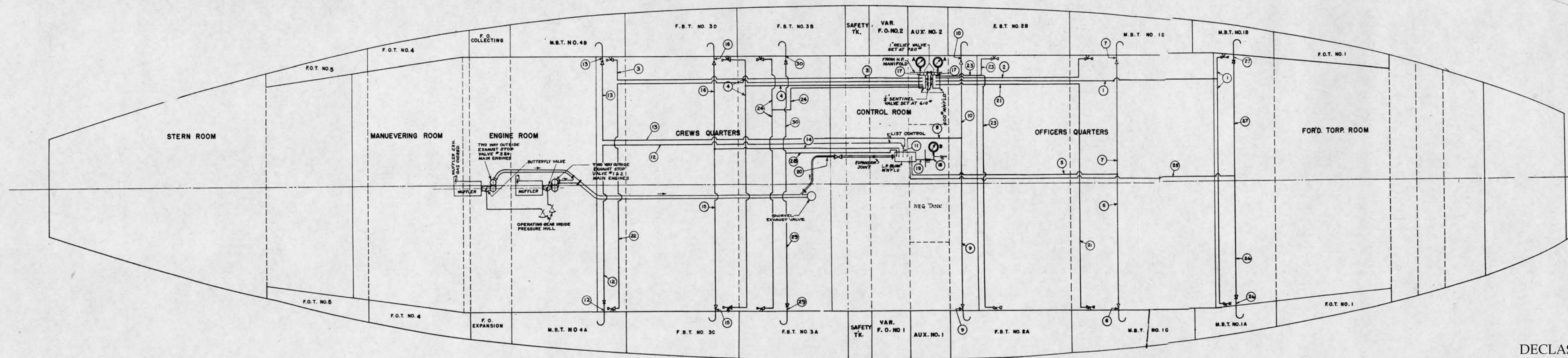
MATERIAL SCHEDULE							
SYMBOL	NAME	MATERIAL	CONNECT.	USIN SPEC	PORTS NO.	TEST PRESS.	REMARKS
1/2" Q 1/2"	ALCOE HANDLE CORRS VALVE	COMP M	FLD 00000	45 Y16		488 P	
2-2 0-2	REGULATING VALVE	COMP M	FLAN	4688		900 P	
0-2	CHECK VALVE L.R.	COMP M	FLAN	46 88		488 P	10" BLOW
0-2	STEEL WENTWORTH	COMP S	FLAN	46 88		488 P	
0-2	RELIEF VALVE	COMP S	SCREW	46 CM		488 P	600" BLOW
0-2	PRESSURE GAUGE	PNEUMIC	SCREW	46 G1			
0-2	AMBLE VALVE AT NULL	COMP S	FLAN	46 M			
	L.R. MANIFOLD	COMP S	FLAN	46 M			10"
	600" MANIFOLD	MODEL	SCREW	46 M		900 P	
	FITTINGS BND.	COMP M	FLAN	46 88	8-11/2"	488 P	
	FITTINGS BND.	COMP M	FLAN	46 88		900 P	600" BLOW
	UNIONS	COMP M	SCREW	46 CM			
	FITTINGS	COMP M	SCREW	46 CM			
	FLANGES	COMP M	SCREW	46 F1			
	FLANGES	STEEL		45 F11			
	FITTINGS-TUBES	COMP M	SCREW	46 86		900 P	
	BOLTS (COMP FLANGES)	NI CU		46 M7			
	NUTS (COMP FLANGES)	AL BZ		46 B7			
	BOLTS (STEEL FLANGES)	STEEL		43 B11			
	NUTS (STEEL FLANGES)	STEEL		43 B11			
	GASKETS	STEEL		33 P13			
	TUBING	COPPER		44 T12			
	TUBING	STEEL		43 T18			
	TUBING	STEEL		44 T13			
	PIPE	BRASS		44 P12			

CAPACITIES & VOLUMES OF TANKS				TONS
NAME		CU. FT.	13.6	
MAIN BALLAST TANK NO. 1A		1001	28.6	28.6
"	" NO. 1B	1001	28.6	28.6
"	" NO. 1C	1119	31.9	31.9
"	" NO. 1D	1118	31.8	31.8
FUEL BALLAST NO. 2A		1001	28.6	28.6
"	" NO. 2B	1001	28.6	28.6
"	" NO. 3A	1178	33.6	33.6
"	" NO. 3B	1178	33.6	33.6
"	" NO. 3C	1045	29.6	29.6
"	" NO. 3D	1045	29.6	29.6
MAIN BALLAST TANK NO. 4A		1856	47.3	47.3
"	" NO. 4B	1656	41.3	41.3

GAUGE LIST					
MARK	NO. REQ.	DIA. DIAL.	SERVICE	READING	RED MARK SETTING
A	2	3 1/2"	MAIN BALLAST BLOW MANIFOLD	0-200"	600"
B	1	3 1/2"	L. P. BLOW MANIFOLD	0-15"	10"



OPERATION OF VESSELS ENGINE EXHAUST AND LOW PRESSURE BLOW SYSTEM			
VESSEL OPERATION	VALVES OPEN	VALVES CLOSED	PATH OF ENGINE EXHAUST GASSES.
SUBMERGED	NONE	A, B, C, D, E	NONE-RUN ON BATTERY
SURFACE	A, C, X, Y	B, D, E	THROUGH MUFFLER & ATMOSPHERE
SNORKEL DEPTH	B, D, E.	A, C.	THROUGH ENGINE TO SEA
NO. 1 DIE ENGINE BLOWING TANKS	C, D, PARTIALLY & MANIFOLD VALVES	A, B, E.	THROUGH MANIFOLD TO TANKS PAET THROUGH MUFFLER.
NO. 3 OR 4 ENGINE BLOWING TANKS	A, B, X, PARTIALLY & MANIFOLD VALVES	C, D, E.	THROUGH MANIFOLD TO TANKS PAET THROUGH MUFFLER.



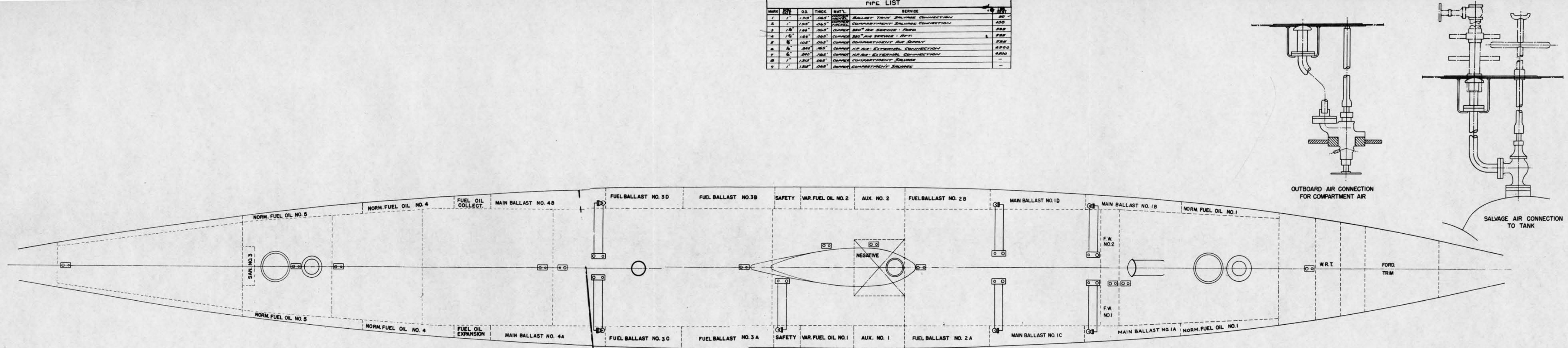
THIS PLAN IS FOR GENERAL ARRANGEMENT ONLY.
DETAILS ARE SUBJECT TO DEVELOPMENT.

DECLASS per
COMNAVSEA Declass TEAM
18 May 2009

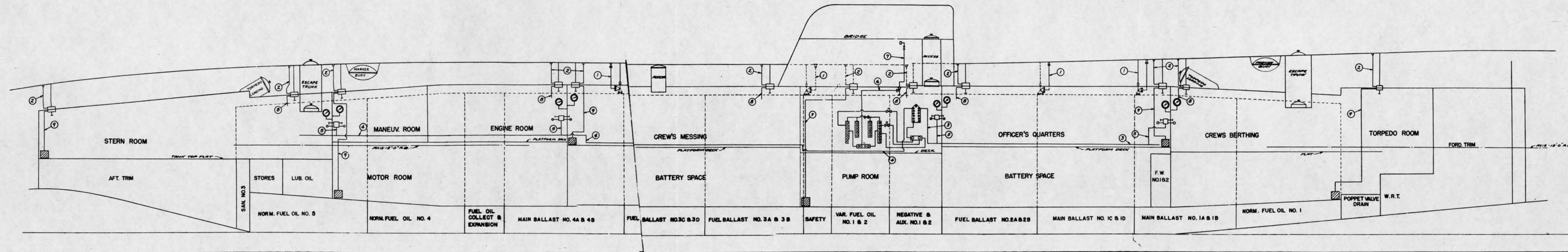
CONFIDENTIAL
REVELATION OF THE CONTENTS OF THIS DRAWING TO AN UNAUTHORIZED PERSON IS PROHIBITED BY LAW, VIOLATION OF WHICH MAY BE A VIOLATION OF THE ESPIONAGE ACT, 50 USC 3231.

NAVY DEPARTMENT		WASHINGTON, D. C.	
BUREAU OF SHIPS			
EXAMINED		SUBMARINES SS563 - 566	
OFFICIAL	SIGNATURE	600* & 10" M.B.T. BLOW DIAGRAM	
DETTERED	<i>[Signature]</i>		
REVIEWED	<i>[Signature]</i>		
DATE	DATE RECEIVED		
APPROVED		DATE 2 FEB.	
		<i>[Signature]</i>	
		FOR CHIEF OF BUREAU	
TYPE PLAN		BUREAU OF SHIPS NO	
		SS563	SO101
		919916	AI
		SCALE-	SHEET OF

MARK	SIZE	Q.D.	THICK	MAT'L	SERVICE	NO.
1	1"	1.315"	.065"	COPPER	BULLETS TRUNK SALVAGE CONNECTION	400
2	1"	1.315"	.065"	COPPER	COMPARTMENT SALVAGE CONNECTION	400
3	1/2"	1.315"	.065"	COPPER	350" AIR SERVICE - FUSE	222
4	1/2"	1.315"	.065"	COPPER	350" AIR SERVICE - AFT	222
5	1/2"	1.315"	.065"	COPPER	COMPARTMENT AIR SUPPLY	222
6	1/2"	1.315"	.065"	COPPER	350" AIR SERVICE - FUSE	4000
7	1/2"	1.315"	.065"	COPPER	350" AIR SERVICE - AFT	4000
8	1"	1.315"	.065"	COPPER	COMPARTMENT SALVAGE	-
9	1"	1.315"	.065"	COPPER	COMPARTMENT SALVAGE	-



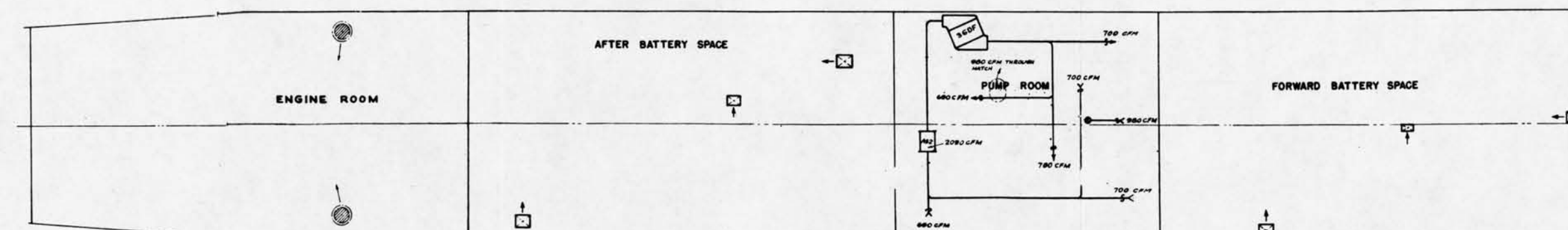
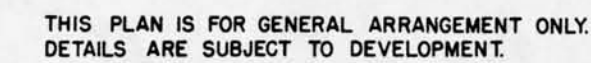
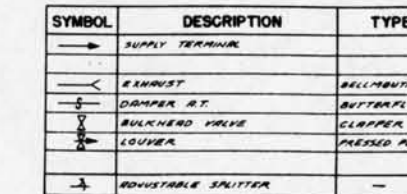
THIS PLAN IS FOR GENERAL ARRANGEMENT ONLY.
DETAILS ARE SUBJECT TO DEVELOPMENT.



DECLASS per
COMNAVSEA Declass TEAM
18 May 2009

NAVY DEPARTMENT		BUREAU OF SHIPS		WASHINGTON, D. C.
EXAMINED	OFFICIAL SIGNATURE	SUBMARINES SS563 - 566		
DESIGNED		AIR SALVAGE		
DRAWN		DIAGRAM		
APPROVED		DATE 2 FEB. 1948		
FOR CHIEF OF BUREAU		BUREAU OF SHIPS NO.		
CONFIDENTIAL		SS563 50001 919917 AIR		
TYPE PLAN		SCALE- SHEET OF		

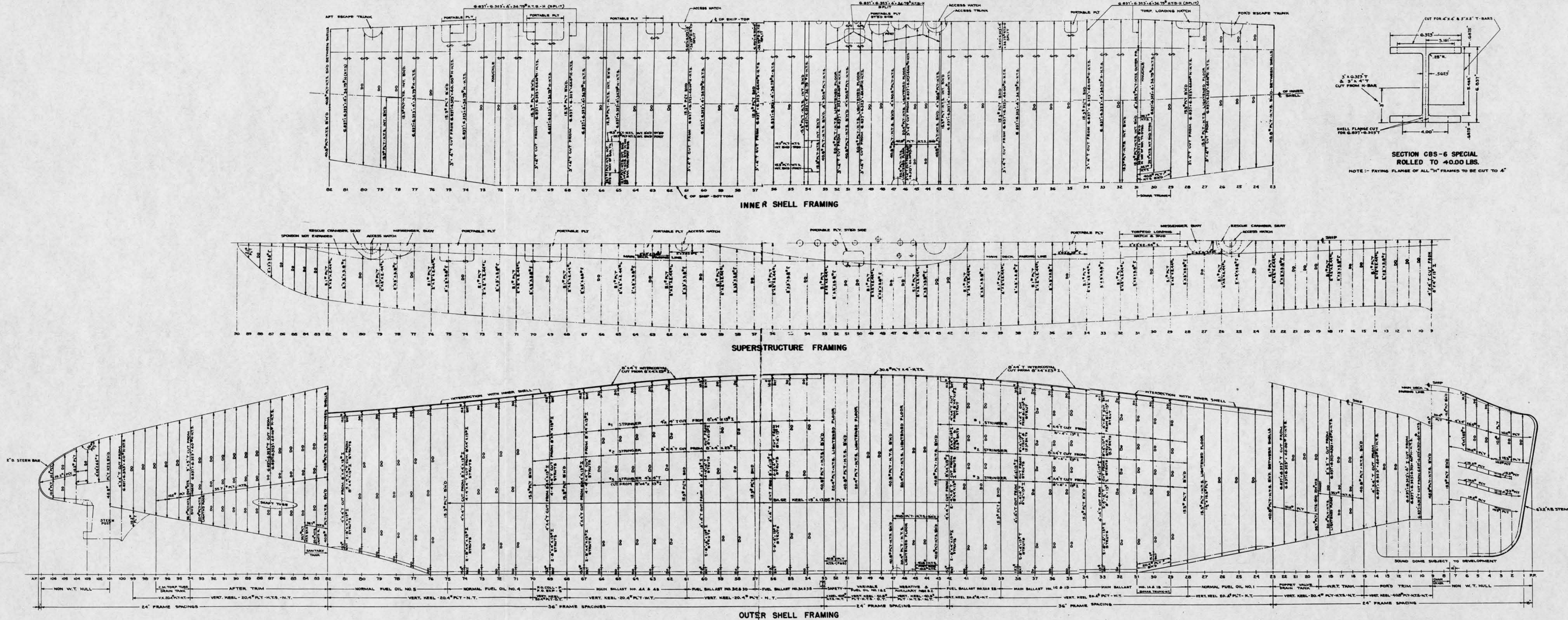
NOTE: COIL SELECTION BASED ON 50° t_a , 70°F.T. & 0.6 COIL SLOPE

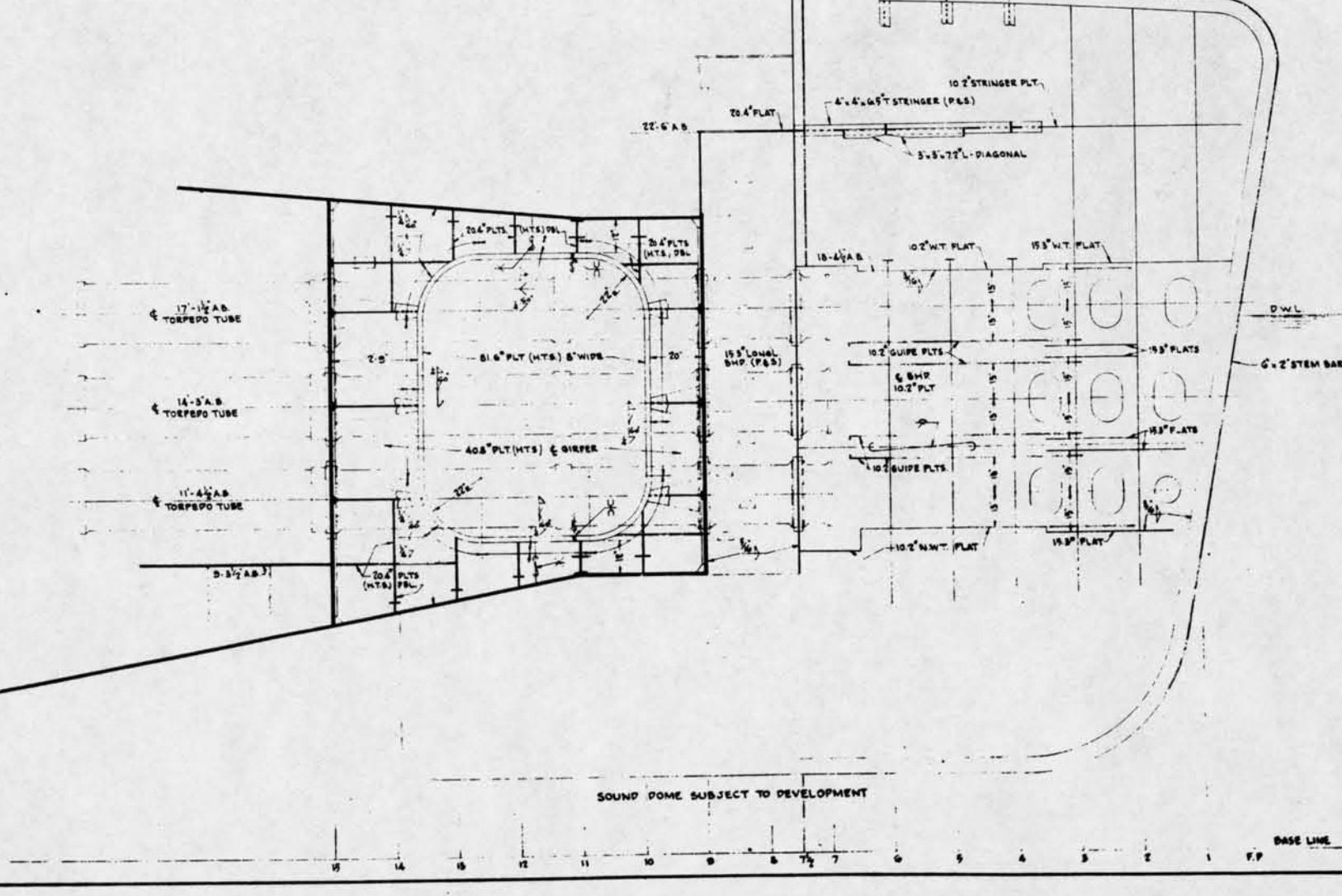
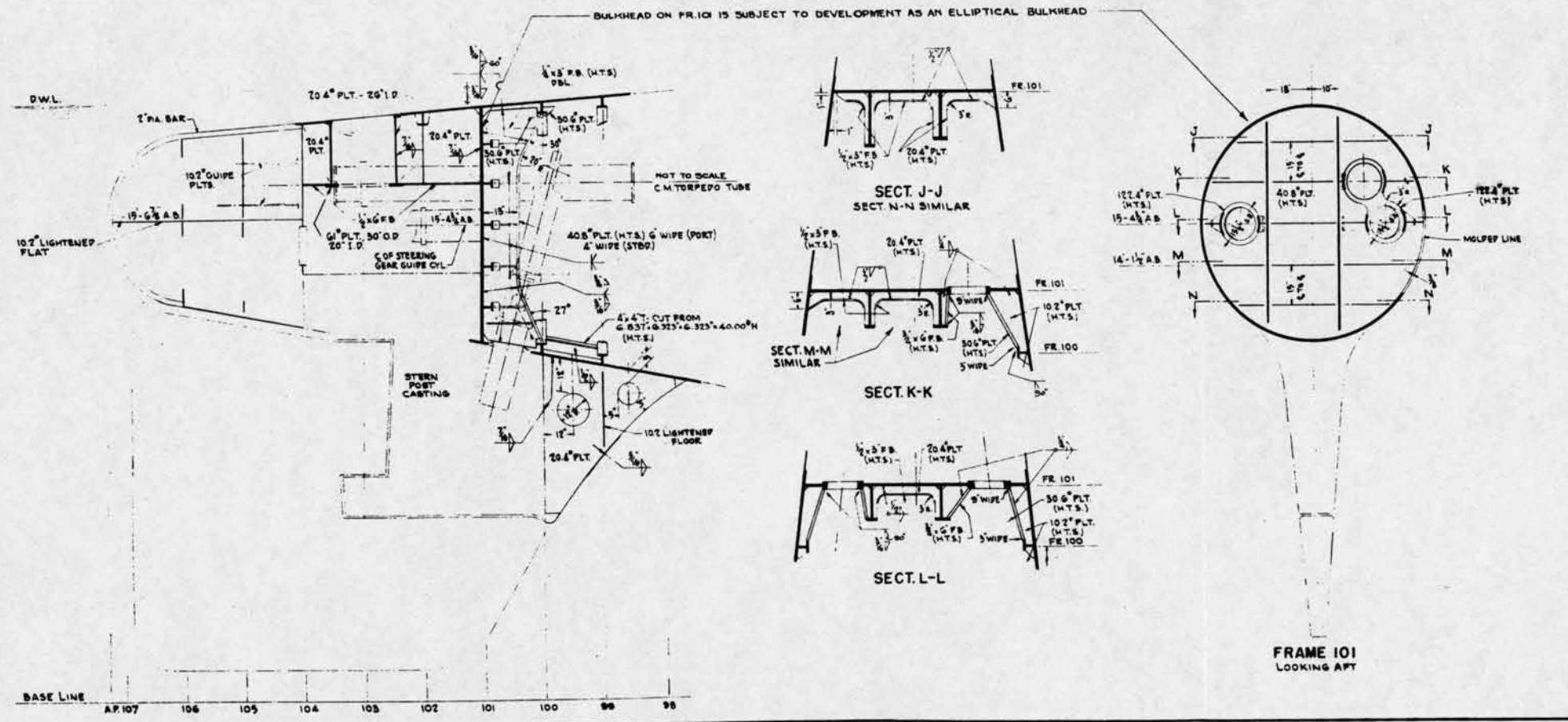
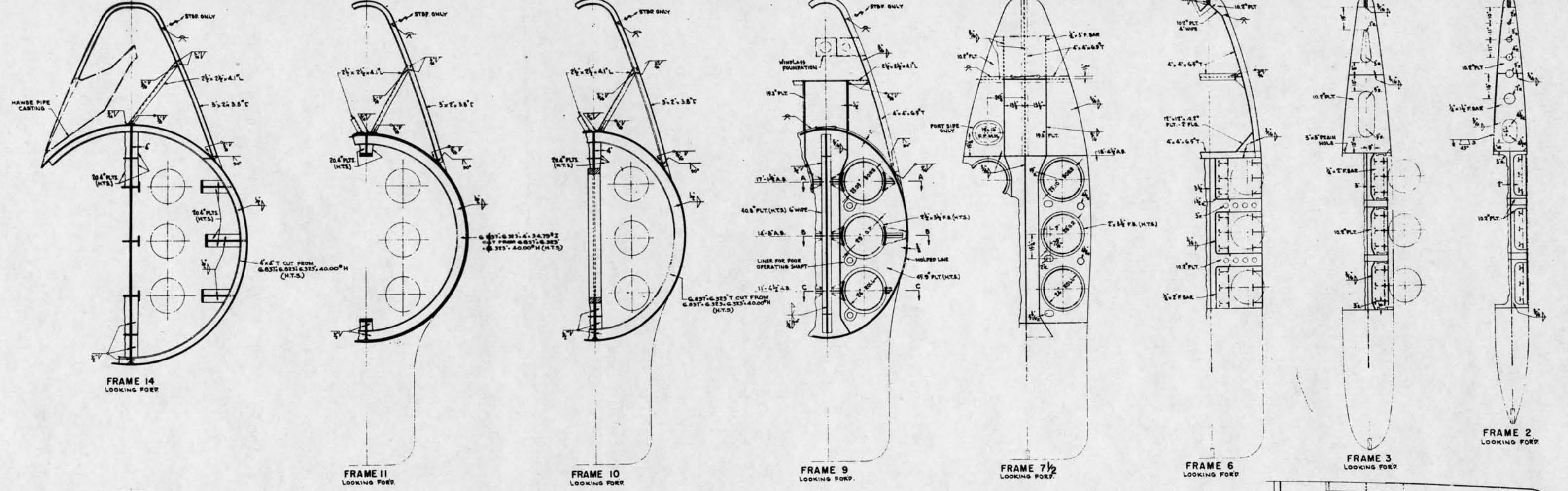
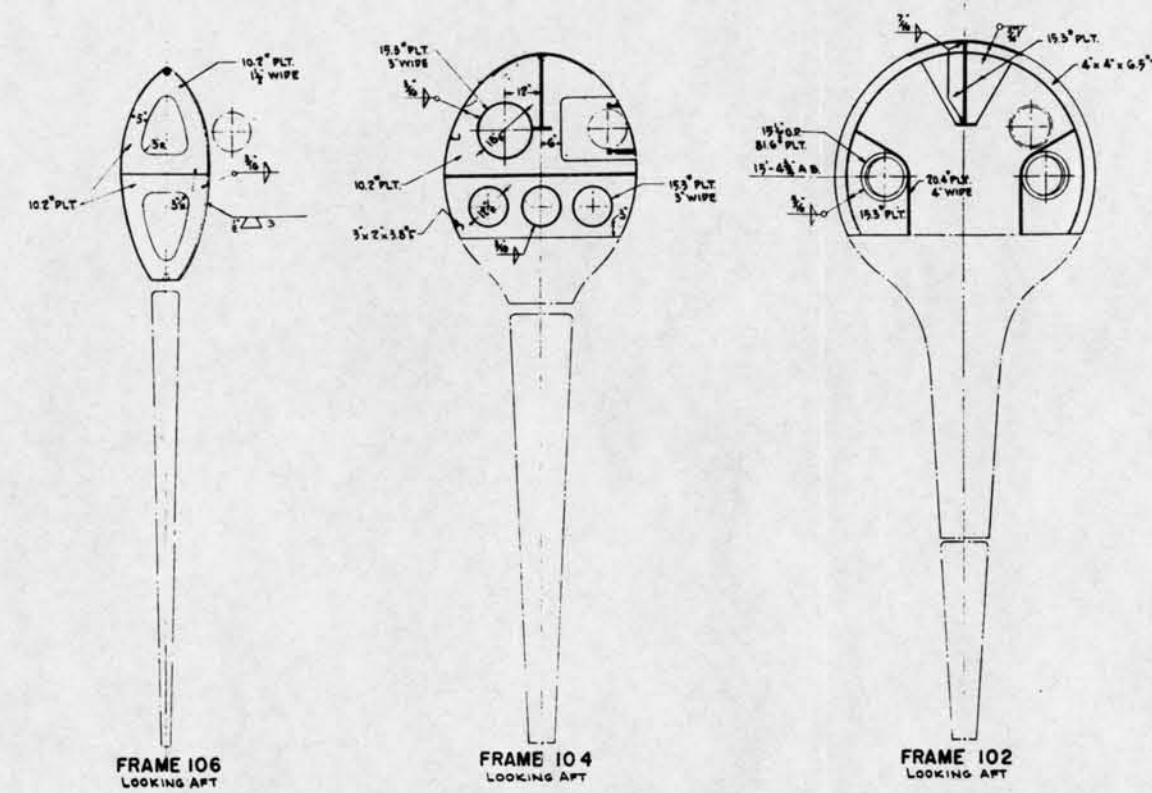


DECLASS per
COMNAVSEA Declass TEAM
18 May 2009

NAVY DEPARTMENT		WASHINGTON, D. C.	
BUREAU OF SHIPS			
EXAMINED		SUBMARINES SS563 - 566	
OFFICIAL	SIGNATURE	VENTILATION SYSTEM	
DESIGNER	<i>[Signature]</i>	DIAGRAM	
REVIEW	<i>[Signature]</i>	DATE	
DATE	SHIP OFFICER PERMITTING, U.S.	APPROVED	DATE
		<i>[Signature]</i>	2 FEB. 1944
		FOR CHIEF OF BUREAU	
TYPE PLAN		BUREAU OF SHIPS NO	
		SS563	SO101 91918 <u>AN.</u>
		SCALE	SHEET
		1:1	1

CONFIDENTIAL
REVELATION OF THE CONTENT
THIS DRAWING TO AN UNAUTH
PERSON IS PROHIBITED BY LA
SEE ESPIONAGE ACT. 50 USC 3





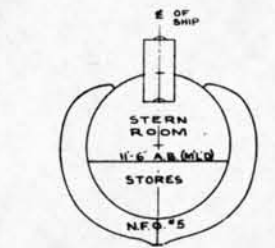
THIS PLAN IS FOR GENERAL ARRANGEMENT ONLY.
DETAILS ARE SUBJECT TO DEVELOPMENT.

DECLASS per
COMNAVSEA Declass TEAM
18 May 2009

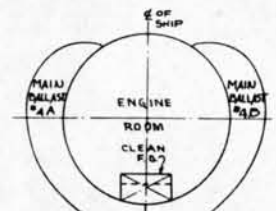
SCALE 1" = 1' 0"

CONFIDENTIAL
REVELATION OF THE CONTENTS OF
THIS DRAWING TO AN UNAUTHORIZED
PERSON IS PROHIBITED BY LAW
(SEE RESPONSE ACT 50 USC 3042)

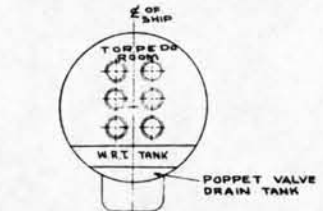
NAVY DEPARTMENT		WASHINGTON, D.C.	
BUREAU OF SHIPS		SUBMARINES SS563-566	
EXAMINED		OFFICIAL SIGNATURE	
ACTION		REVIEWED	
DATE		DATE	
APPROVED		DATE	
TYPE PLAN		BUREAU OF SHIPS NO.	
SCALE 1" = 1' 0"		SHEET OF	



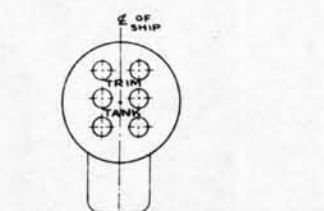
SECTION AT FR.79
LOOKING AFT



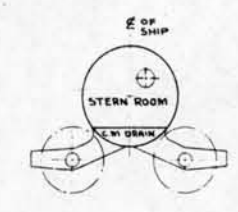
SECTION AT FR.66
LOOKING AFT



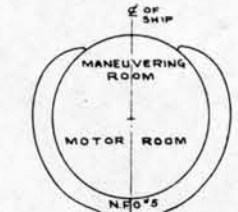
SECTION AT FR.20
LOOKING FOR'D



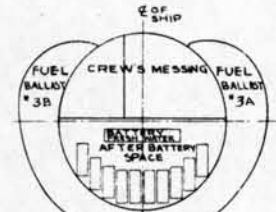
SECTION AT FR.14
LOOKING FOR'D



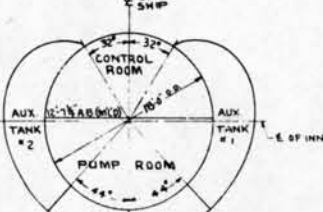
SECTION AT FR.96
LOOKING AFT



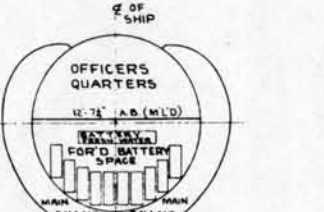
SECTION AT FR.76
LOOKING AFT



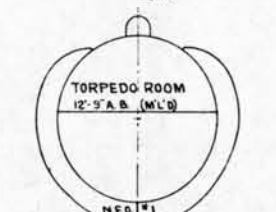
SECTION AT FR.56
LOOKING FOR'D



SECTION AT FR.45
LOOKING FOR'D



SECTION AT FR.36
LOOKING FOR'D

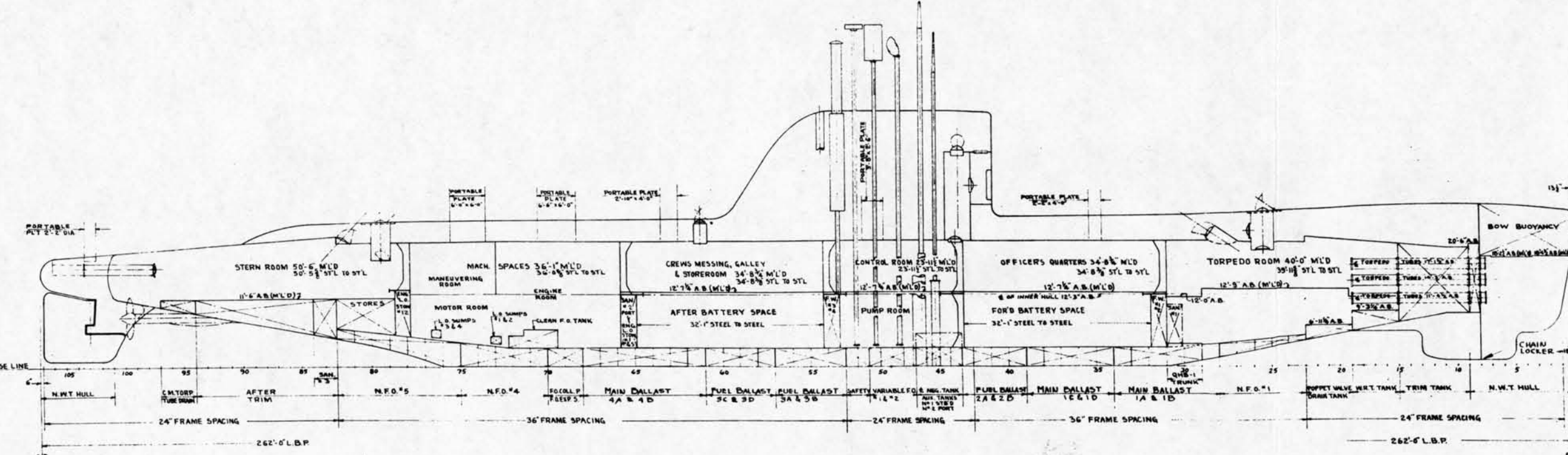
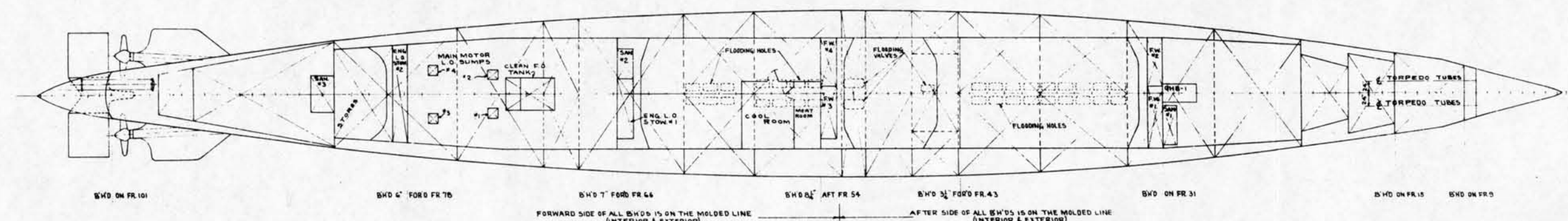


SECTION AT FR.28
LOOKING FOR'D

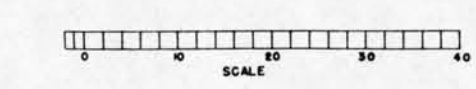
CAPACITIES & VOLUMES OF TANKS (VENT PIPING NOT INCLUDED)

LUBRICATING OIL		CUBIC FEET	GALS	TONS
ENGINE STORAGE NO.1 95% NET CAP.		174	1229	4.47
ENGINE STORAGE NO.2 95% NET CAP.		216	1615	5.55
TOTAL		390	2914	10.02
MAIN MOTOR SUMP NO.1 75% NET CAP.		3	20	.07
MAIN MOTOR SUMP NO.2 75% NET CAP.		3	20	.07
MAIN MOTOR SUMP NO.3 75% NET CAP.		3	20	.07
MAIN MOTOR SUMP NO.4 75% NET CAP.		3	20	.07
TOTAL		12	80	.28
MAIN ENG. SUMP NO.1 82 75% NET CAP.		1200	412	
COMB. TOTAL			4184	14.42
SEA WATER				
SANITARY				
NO.1	100%	58	433	1.66
NO.2	100%	84	630	2.41
NO.3	100%	143	1070	4.09
TOTAL		285	2133	8.16
FRESH WATER				
NO.1		155	1156	4.29
NO.2		155	1156	4.29
NO.3		144	1077	4.00
NO.4		144	1077	4.00
TOTAL		598	4466	16.58
BATTERY FRESH WATER				
FOR'D		120	900	3.34
AFT.		80	600	2.23
TOTAL		200	1500	5.57
COMB. TOTAL		798	5966	22.15

MAIN BALLAST		CUBIC FEET	TONS
NO'S 1A & 1B		2003	57.23
NO'S 1C & 1D		2238	63.94
NO'S 4A & 4B		3313	94.65
SAFETY		757	21.62
TOTAL		8311	237.44
NEGATIVE		408	11.66
VARIABLE BALLAST			
AUXILIARY NO.1		553	15.79
AUXILIARY NO.2		553	15.79
FOR'D TRIM		1017	29.06
FOR'D W.R.T.		152	4.34
AFTER TRIM		918	26.23
POPPET DRAIN (FOR'D)		94	2.70
C.M.TORP. TUBE DRAIN (AFT)		62	1.77
TOTAL		3349	95.68
NORMAL FUEL OIL			
NO.1		7540	23.44
FUEL BALLAST			
NO.4		12967	40.27
NO.5		13256	41.17
COLLECTING		3219	9.99
EXPANSION		3219	9.99
VARIABLE FUEL OIL NO'S 1 & 2		11073	34.39
CLEAN F.O.		748	2.32
TOTAL		52031	161.57
BOW BUOYANCY		319	9.11



DECLASS per
COMNAVSEA Declass TEAM
18 May 2009



CONFIDENTIAL
REVELATION OF THE CONTENTS OF
THIS DRAWING TO AN UNAUTHORIZED
PERSON IS PROHIBITED BY LAW
SEE: ESPIONAGE ACT, 50 USC 31-32

NAVY DEPARTMENT
WASHINGTON, D.C.

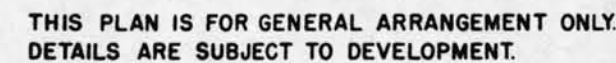
BUREAU OF SHIPS
SUBMARINES SS563-566
COMPARTMENTS & TANKS

EXAMINED
OFFICIAL SIGNATURE
SECTION HEAD
REVIEWED
DATE 2 FEB 1968

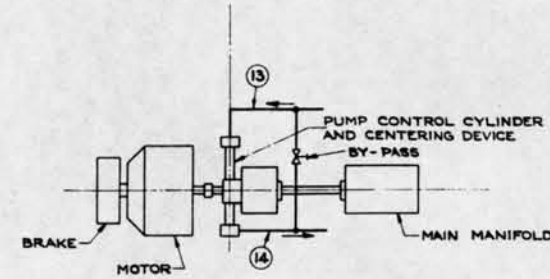
TYPE PLAN
SS563/SOIOI 99921 ALT.
SCALE: 1/8" = 1 FT. SHEET OF

[illegible]

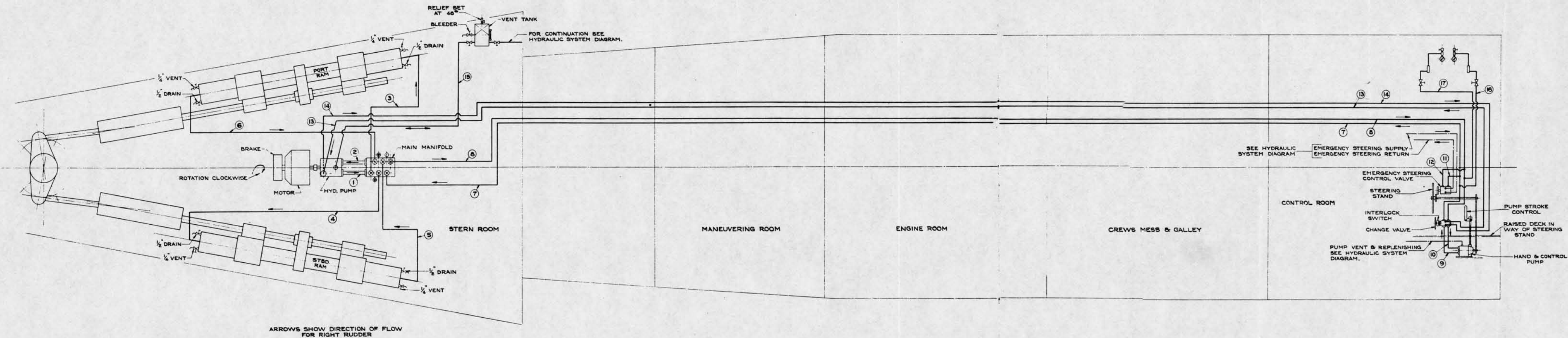
PIPE LIST						
MARK	NOH	SIZE	THICK	MATERIAL	SERVICE	TEL
		IN				PRE
1	2"	2.376	.065	CU.NI.	FUEL OIL - NO. 1 FUEL OIL TANK - PORT	-
2	2"	2.376	.065	CU.NI.	FUEL OIL - NO. 1 FUEL OIL TANK - STARBOARD	-
3	2"	2.376	.065	CU.NI.	FUEL OIL - NO. 2 FUEL BALLAST TANK - STARBOARD	-
4	2"	2.376	.065	CU.NI.	FUEL OIL - NO. 2 FUEL BALLAST TANK - PORT	-
5	2 1/2"	2.676	.120	STEEL	FUEL OIL - NO. 1 FUEL OIL TANK - STARBOARD	61
6	2 1/2"	2.676	.120	STEEL	FUEL OIL - NO. 1 FUEL OIL TANK - PORT	61
7	2 1/2"	2.676	.120	STEEL	FUEL OIL FILLING - TRANSFER	61
8	2"	2.376	.120	STEEL	FUEL OIL - NO. 2 FUEL BALLAST TANK - STARBOARD	61
9	2"	2.376	.120	STEEL	FUEL OIL - NO. 2 FUEL BALLAST TANK - PORT	61
10	2"	2.376	.065	CU.NI.	FUEL OIL - NO. 2 FUEL BALLAST TANK - STARBOARD	-
11	2"	2.376	.065	CU.NI.	FUEL OIL - NO. 2 FUEL BALLAST TANK - PORT	-
12	2"	2.376	.065	CU.NI.	FUEL OIL - NO. 4 FUEL OIL TANK - PORT	-
13	2"	2.376	.120	STEEL	FUEL OIL - NO. 4 FUEL OIL TANK - PORT	-
14	2"	2.376	.120	STEEL	FUEL OIL - NO. 4 FUEL OIL TANK - STARBOARD	-
15	2"	2.376	.065	CU.NI.	FUEL OIL - NO. 4 FUEL OIL TANK - STARBOARD	-
16	2 1/2"	2.676	.120	STEEL	FUEL OIL - NO. 4 FUEL OIL TANK - STARBOARD	-
17	2 1/2"	2.676	.120	STEEL	FUEL OIL FILLING - NO. 5 TANKS NO. 4 & 5 STARBOARD	-
18	2 1/2"	2.676	.120	STEEL	FUEL OIL FILLING - PORT - RT	-
19	2 1/2"	2.676	.120	STEEL	FUEL OIL FILLING - PORT - PORT	-
20	2 1/2"	2.676	.120	STEEL	FUEL OIL - NO. 4 & 5 FUEL OIL TANKS	-
21	2"	2.376	.120	STEEL	FUEL OIL - NO. 5 FUEL OIL TANK - PORT	-
22	2"	2.376	.065	CU.NI.	FUEL OIL - NO. 5 FUEL OIL TANK - PORT	-
23	2"	2.376	.065	CU.NI.	FUEL OIL - VARIABLE FUEL OIL TANK NO. 1	-
24	2"	2.376	.065	CU.NI.	FUEL OIL - VARIABLE FUEL OIL TANK NO. 2	-
25	1 1/2"	1.666	.120	STEEL	FUEL OIL TO COLLECTING TANK	61
26	1 1/2"	1.666	.065	CU.NI.	FUEL OIL FROM DRAIN FROM COLL. TANK	-
27	2"	2.376	.120	STEEL	RELIEF VALVE SECTION TO BILGE	-
28	1 1/2"	1.666	.120	STEEL	FUEL OIL FROM DRAIN FROM COLL. TANK	-
29	2 1/2"	2.676	.120	STEEL	FUEL OIL - NO. 4 & 5 FUEL OIL TANKS - STARBOARD	61
30	2 1/2"	2.676	.120	STEEL	FUEL OIL - NO. 4 & 5 FUEL OIL TANKS - PORT	61
31	2"	2.376	.120	STEEL	FUEL OIL - NO. 5 FUEL OIL TANK - STARBOARD	61
32	2"	2.376	.120	STEEL	FUEL OIL - NO. 5 FUEL OIL TANK - PORT	61
33	2 1/2"	2.676	.120	STEEL	FUEL OIL FILLING	61
34	2 1/2"	2.676	.120	STEEL	FUEL OIL FILLING	61
35	2"	2.376	.120	STEEL	FUEL OIL FILLING - TEST CONN.	-



NAVY DEPARTMENT		WASHINGTON, D. C.	
BUREAU OF SHIPS			
EXAMINED		SUBMARINES SSS563 - 566 FUEL OIL SYSTEM DIAGRAM <i>C. J. Brown</i> DATE 4 FEB. 1942 FOR CHIEF, BUREAU	
OFFICIAL	SIGNATURE		
DESIGN ENG	<i>H. K. Brown</i>		
DESIGN	<i>C. M. Meyer</i>		
DATE	TEST REPORT FURNISHED, U. S. C.		
APPROVED			
TYPE PLAN		BUREAU OF SHIPS NO SSS563 SONO 919922 (AN) SCALE _____ SHEET _____ OF _____	



MARK	SIZE	OD	THICKNESS	MATERIAL	SERVICE	TEST SPEC
1	1.315"	.180"		COPPER	PUMP TO MANIFOLD (PRESS. R.R.)	2250 44712
2	1.315"	.180"		COPPER	PUMP TO MANIFOLD (RET. R.R.)	2250 44712
3	1.050"	.148"		COPPER	MANIFOLD TO PORT RAM (PRESS. R.R.)	2250 44712
4	1.050"	.148"		COPPER	MANIFOLD TO AFT STD RAM (PRESS. R.R.)	2250 44712
5	1.050"	.148"		COPPER	MANIFOLD TO PORT STD RAM (RET. R.R.)	2250 44712
6	1.050"	.148"		COPPER	MANIFOLD TO AFT PORT RAM (RET. R.R.)	2250 44712
7	1.050"	.148"		COPPER	HAND & EMERG. CHANGE VALVE TO MAN. APT. (PRESS. R.R.)	2250 44712
8	1.050"	.148"		COPPER	HAND & EMERG. CHANGE VALVE TO MAN. APT. (RET. R.R.)	2250 44712
9	1.050"	.148"		COPPER	CONT. PUMP TO CHANGE VALVE (PRESS. R.R.)	2250 44712
10	1.050"	.148"		COPPER	CONT. PUMP TO CHANGE VALVE (RET. R.R.)	2250 44712
11	1.050"	.148"		COPPER	EMERG. CONT. VALVE TO H. & E. LINE (PRESS. R.R.)	2250 44712
12	1.050"	.148"		COPPER	EMERG. CONT. VALVE TO H. & E. LINE (RET. R.R.)	2250 44712
13	.840"	.085"		COPPER	CHANGE VALVE TO CONT. CYLINDER (PRESS. R.R.)	900 44712
14	.840"	.085"		COPPER	CHANGE VALVE TO CONT. CYLINDER (RET. R.R.)	900 44712
15	.840"	.085"		COPPER	VENT & REPLEN. FROM PUMP TO VENT TANK	180 44712
16	.250"	.050"		COPPER	PRESSURE GAUGE (R.R.)	2250 44712
17	.250"	.050"		COPPER	PRESSURE GAUGE (L.R.)	2250 44712



- SYMBOLS
- ⊗ MANIFOLD STOP VALVE
 - ⊙ MANIFOLD RELIEF VALVE
 - MANIFOLD BY-PASS VALVE
 - ⊕ GLOBE STOP VALVE
 - ⊖ ANGLE RELIEF VALVE
 - ⊗ PRESSURE GAUGE
 - PRESSURE SNUBBER

THIS PLAN IS FOR GENERAL ARRANGEMENT ONLY.
DETAILS ARE SUBJECT TO DEVELOPMENT.

GENERAL NOTES

- IF THE AUTOMATIC STEERING GEAR EMPLOYS HYDRAULIC POWER FROM THE SERVICE LINES IN THE STERN ROOM FOR CONTROL OF THE STEERING GEAR POWER PLANT, POWER STEERING BY MEANS OF THE HAND PUMP IN THE CONTROL ROOM WILL NOT BE REQUIRED AND LINES 13, 14 AND THE CHANGE VALVE ARE TO BE OMITTED.
- ALTHOUGH A VARIABLE DISPLACEMENT (WATERBURY TYPE) HYDRAULIC PUMP IS INDICATED FOR USE IN THE STEERING GEAR POWER PLANT, PREFERENCE SHALL BE GIVEN TO THE DEVELOPMENT OF A PRACTICABLE DESIGN EMPLOYING A CONSTANT DELIVERY PUMP (SIMILAR TO DE LEVAL - 150) FOR PURPOSES OF NOISE REDUCTION AND DIRECT COUPLING TO A 1750 R.P.M. ELECTRIC MOTOR.

DECLASS per
COMNAVSEA Declass TEAM
18 May 2009

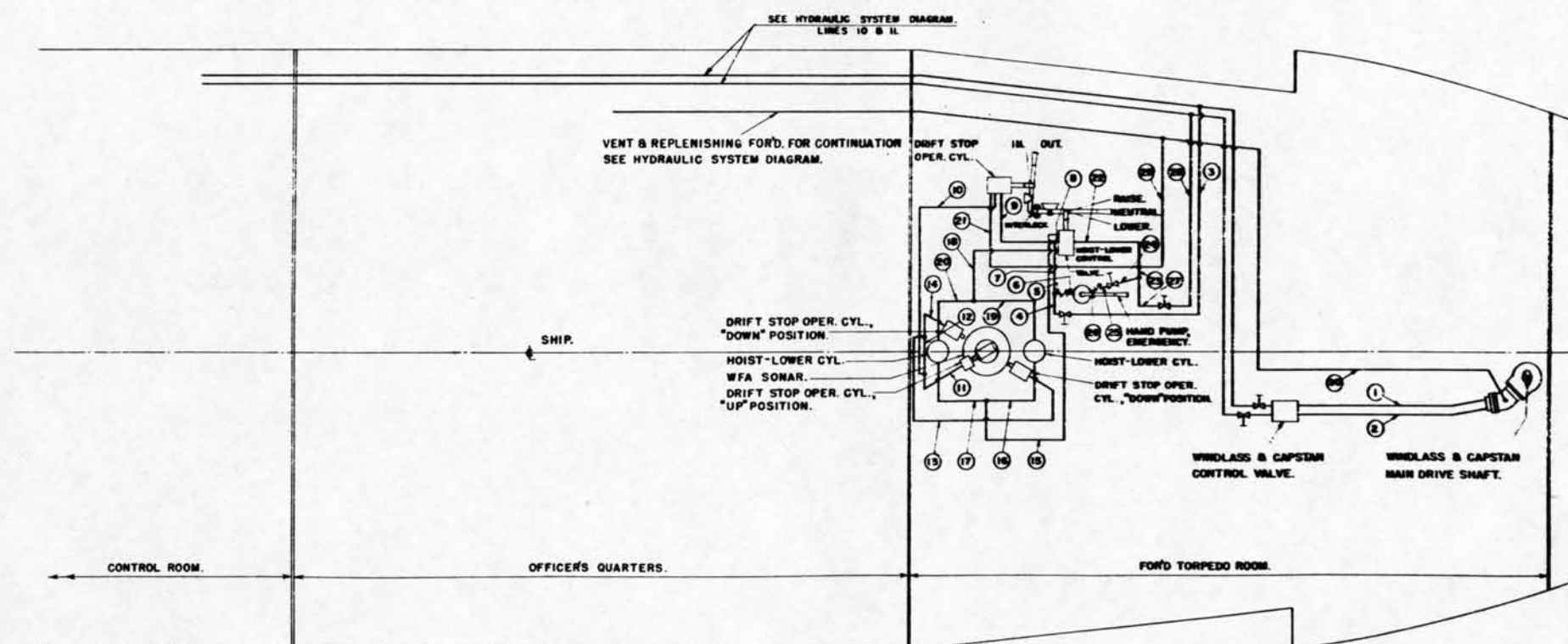
NAVY DEPARTMENT.		WASHINGTON, D. C.	
BUREAU OF SHIPS.			
EXAMINED	SUBMARINES SS563 - 566		
OFFICIAL SIGNATURE	STEERING GEAR PIPING SYSTEM		
SECT HEAD	DIAGRAM.		
REVIEWED	DATE 2 FEB. 1948		
DRAWN	FOR CHIEF OF BUREAU		
CONFIDENTIAL			
REVELATION OF THE CONTENTS OF THIS DRAWING TO AN UNAUTHORIZED PERSON IS PROHIBITED BY LAW. SEE ESPIONAGE ACT 50 USC 31-32			
TYPE PLAN		SS563 50101 919924 ALT.	
SCALE: DIAGNOSTIC SHEET		OF	

PIPE LIST					
MARK	SIZE	THK.	MATL.	SERVICE	REF.
1				WINDLASS & CAPSTAN, & WFA - SUPPLY.	
2				WINDLASS & CAPSTAN, & WFA - RETURN.	
3				WFA - SUPPLY TO HOIST-LOWER CONTROL VALVE.	
4				WFA - SUPPLY TO HOIST-LOWER CONTROL VALVE.	
5				WFA - HAND PUMP DISCHARGE.	
6				WFA - HAND PUMP DISCHARGE.	
7				WFA - SUPPLY TO HOIST-LOWER CONTROL VALVE.	
8				WFA - SUPPLY TO HOIST-LOWER CONTROL VALVE.	
9				WFA - SUPPLY TO DRIFT STOP CONTROL VALVE.	
10				WFA - SUPPLY & RETURN, DRIFT STOP OPER. CYL'S.	
11				WFA - SUPPLY & RETURN, UPPER DRIFT STOP OPER. CYL.	
12				WFA - SUPPLY & RETURN, LOWER DRIFT STOP OPER. CYL'S.	
13				WFA - SUPPLY & RETURN, LOWER DRIFT STOP OPER. CYL.	
14				WFA - SUPPLY & RETURN, LOWER DRIFT STOP OPER. CYL.	
15				WFA - SUPPLY & RETURN, HOIST-LOWER CYL'S.	
16				WFA - SUPPLY & RETURN, HOIST-LOWER CYL.	44 T12
17				WFA - SUPPLY & RETURN, HOIST-LOWER CYL.	
18				WFA - SUPPLY & RETURN, HOIST-LOWER CYL'S.	
19				WFA - SUPPLY & RETURN, HOIST-LOWER CYL.	
20				WFA - SUPPLY & RETURN, HOIST-LOWER CYL.	
21				WFA - RETURN FROM DRIFT STOP CONTROL VALVE.	
22				WFA - RETURN FROM HOIST-LOWER CONTROL VALVE.	
23				WFA - RETURN.	
24				WFA - HAND PUMP SUCTION.	
25				WFA - HAND PUMP SUCTION.	
26				WFA - HAND PUMP SUCTION.	
27				WFA - RETURN.	
28				WFA - RETURN.	
29				WFA - VENT & REPLENISHING.	
30				WINDLASS & CAPSTAN - VENT & REPLENISHING.	

SYMBOLS

DS --- GLOBE STOP VALVE.

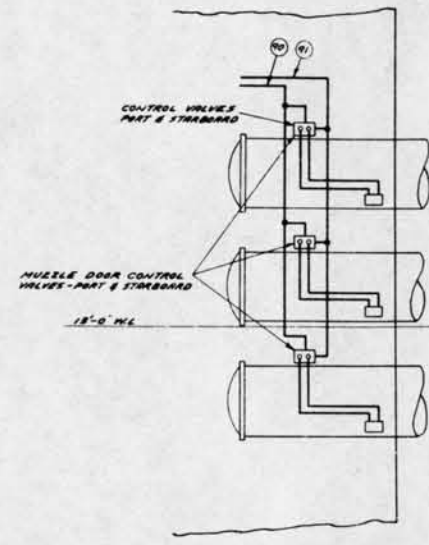
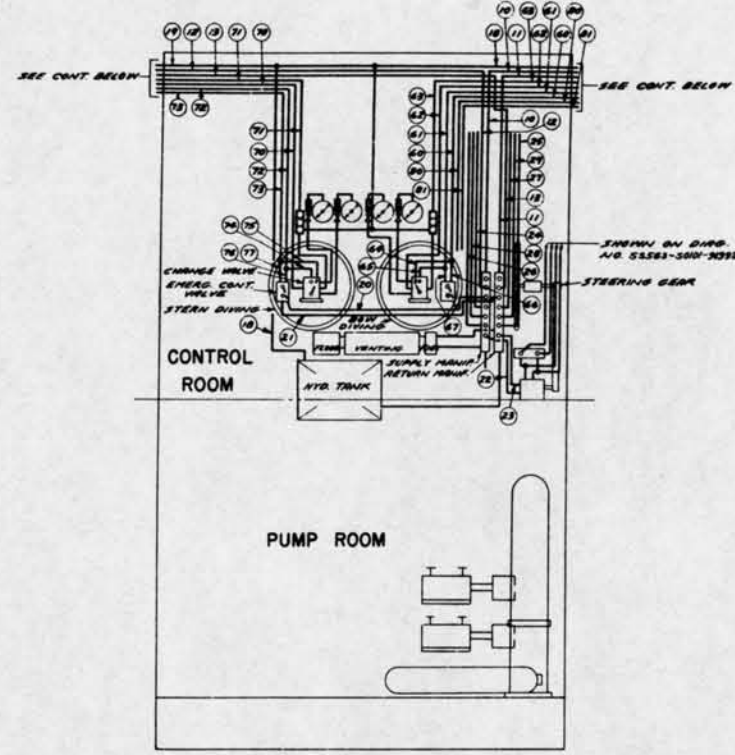
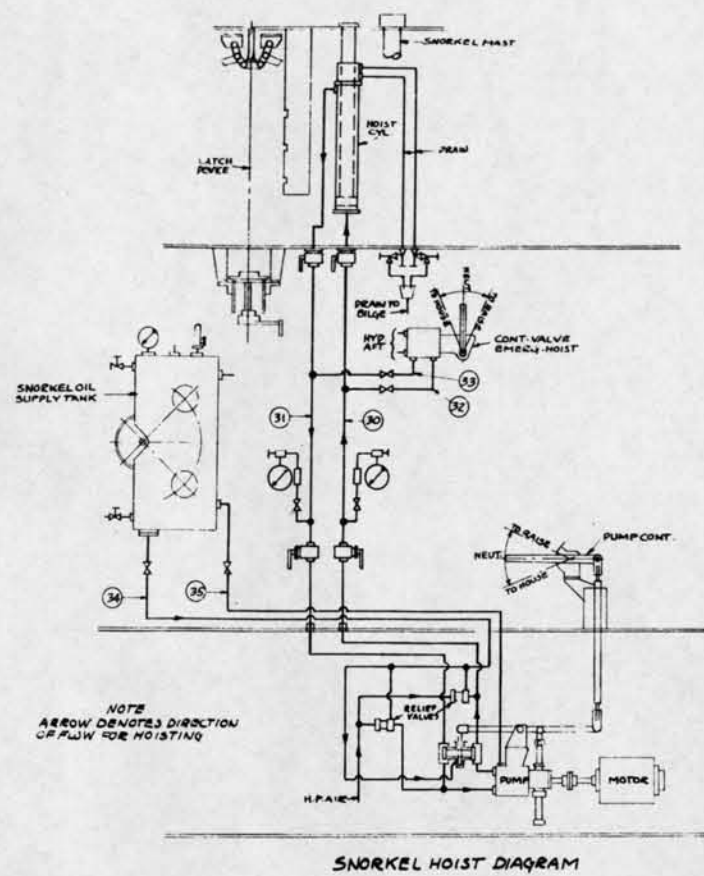
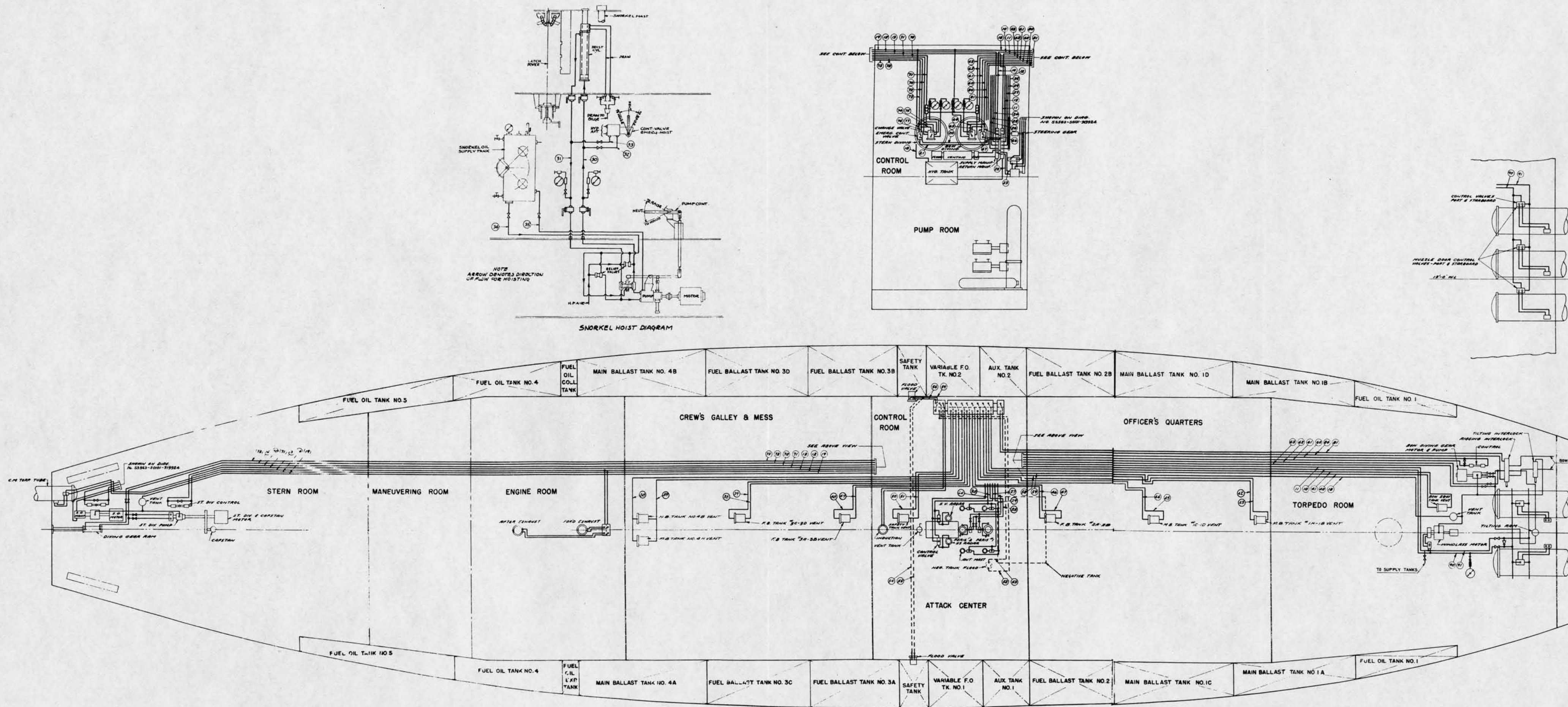
CV --- CHECK VALVE.



THIS PLAN IS FOR GENERAL ARRANGEMENT ONLY.
DETAILS ARE SUBJECT TO DEVELOPMENT.

DECLASS per
COMNAVSEA Declass TEAM
18 May 2009

NAVY DEPARTMENT		WASHINGTON, D.C.	
BUREAU OF SHIPS.			
EXAMINED	SUBMARINES SS563 - 566		
OFFICIAL SIGNATURE	WINDLASS & CAPSTAN, & WFA		
SECT. HEAD	HYDRAULIC SYSTEM DIAGRAM.		
REVIEWER	DATE 2 FEB. 1948		
DRAWN	NAVY SHIPYARD	APPROVED	FOR CHIEF OF BUREAU
CONFIDENTIAL		BUREAU OF SHIPS NO.	
REVELATION OF THE CONTENTS OF THIS DRAWING TO AN UNAUTHORIZED PERSON IS PROHIBITED BY LAW. SEE ESPIONAGE ACT, 50 USC 31-32.		SS563/SO101 919925 ALT	
TYPE PLAN.		SCALE: DIAGNOSTIC SHEET OF	



PIPE LIST					SERVICE	TEST
MARK	NO.	SIZE	THK.	MATL.		
1						
2						
3						
4						
5						
6						
7						
8						
9						
10						
11						
12						
13						
14						
15						
16						
17						
18						
19						
20						
21						
22						
23						
24						
25						
26						
27						
28						
29						
30						
31						
32						
33						
34						
35						
36						
37						
38						
39						
40						
41						
42						
43						
44						
45						
46						
47						
48						
49						
50						
51						
52						
53						
54						
55						
56						
57						
58						
59						
60						
61						
62						
63						
64						
65						
66						
67						
68						
69						
70						
71						
72						
73						
74						
75						
76						
77						
78						
79						
80						
81						
82						
83						
84						
85						
86						
87						
88						
89						
90						
91						
92						
93						
94						
95						
96						
97						
98						
99						
100						

GENERAL NOTES

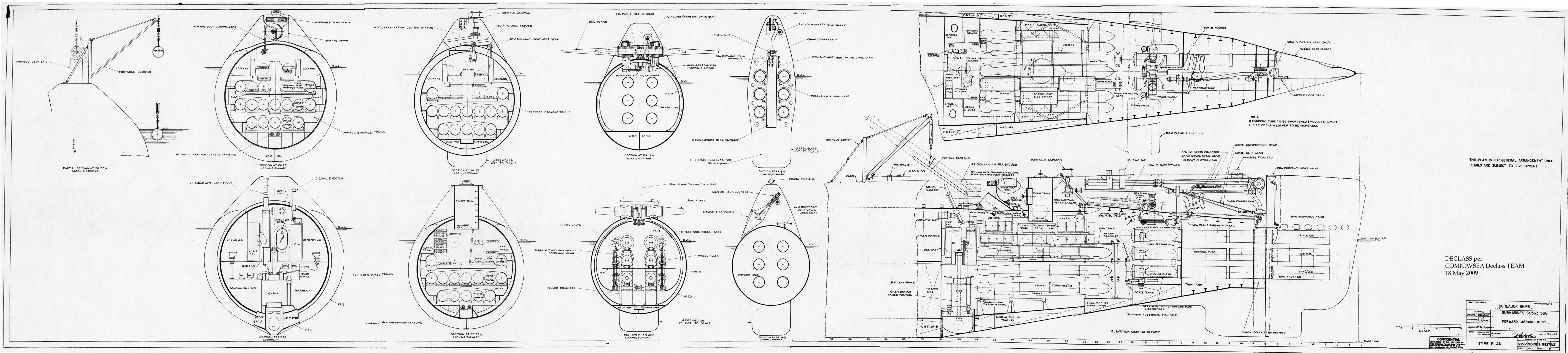
1. ALTHOUGH A VARIABLE DISPLACEMENT (WATERBURY TYPE) HYDRAULIC PUMP IS INDICATED FOR USE IN THE BOW AND STERN DIVING GEAR POWER PLANTS, PREFERENCE SHALL BE GIVEN TO THE DEVELOPMENT OF A PRACTICABLE DESIGN EMPLOYING A CONSTANT DELIVERY PUMP (SIMILAR TO DE LUAL - 140) FOR PURPOSES OF NOISE REDUCTION AND DIRECT COUPLING TO A 1750 R.P.M. ELECTRIC MOTOR.

2. IF HYDRAULIC TRAINING FOR SV AND SS RADAR MASTS IS PROVIDED, HYDRAULIC POWER FROM THE MAIN PLANT SHALL BE FURNISHED FOR EMERGENCY USE IN ADDITION TO A SEPARATE TRAINING PLANT.

THIS PLAN IS FOR GENERAL ARRANGEMENT ONLY. DETAILS ARE SUBJECT TO DEVELOPMENT.

DECLASS per
COMNAVSEA Declass TEAM
18 May 2009

NAVY DEPARTMENT		WASHINGTON, D. C.	
BUREAU OF SHIPS.			
EXAMINED	SUBMARINES	SS563 - 566.	
OFFICIAL SIGNATURE			
REVIEWED	HYDRAULIC SYSTEM DIAGRAM		
DATE	2 FEB 1948		
CONFIDENTIAL		REVEALATION OF THE CONTENTS OF THIS DRAWING TO AN UNAUTHORIZED PERSON IS PROHIBITED BY LAW. (SEE ESPIONAGE ACT, 50 USC 31-32.)	
TYPE PLAN.		SS563 SOIO 91926 ALT.	



THIS PLAN IS FOR GENERAL ARRANGEMENT ONLY.
DETAILS ARE SUBJECT TO DEVELOPMENT.

DECLASS per
COMNAVSEA Declass TEAM
18 May 2009

NAVY DEPARTMENT		WASHINGTON, D. C.	
EXAMINED		BUREAU OF SHIPS	
OFFICIAL SIGNATURE		SUBMARINES S5563-566	
SECTOR NAME		FORWARD ARRANGEMENT	
REMARKS OF THE ENGINEER		DATE 2 FEB 1948	
DESIGN	APPROVED	BUREAU OF SHIPS NO	
NAVY DEPARTMENT		S5563 50101	
TYPE PLAN		SCALE: 1/2" = 1'1"	
		SHEET OF	

SECTION LOOKING OUTBOARD TO ST'B'D

SECTION LOOKING OUTBOARD TO PORT

SECTION - LOOKING AFT
FR. 48, UPPER LEVEL - FR. 51, LOWER LEVEL

SECTION - LOOKING FORWARD
FR.47, UPPER LEVEL-FR.50, LOWER LEVEL

PLAN VIEW - BRIDGE

PLAN VIEW - CONTROL ROOM

PLAN VIEW - PUMP ROOM

53 52 51 50 49 48 47 46 45

CENTERLINE ELEVATION LOOKING TO PORT

THIS PLAN IS FOR GENERAL ARRANGEMENT ONLY.
DETAILS ARE SUBJECT TO DEVELOPMENT.

DECLASS per
COMNAVSEA Declass TEAM
18 May 2009

NAVY DEPARTMENT		WASHINGTON, D. C.	
EXAMINED		BUREAU OF SHIPS	
OFFICIAL	SIGNATURE	SUBMARINES SS563-566	
RECOMMENDATION	<i>W. C. Brown</i>	AMIDSHIPS ARRANGEMENT	
REVISED BY <i>W. C. Brown</i>			
DATE	APPROVED	DATE 2 FEB. 1946	
	<i>W. C. Brown</i>	FOR CHIEF OF BUREAU	
		BUREAU OF SHIPS NO.	
TYPE PLAN		SS563 5001 91928 ALT.	
		CAPTAIN LIT DIRECT OF	

