



PANDA EXPRESS, INC.
1683 Walnut Grove Ave.
Rosemead, California
91770
Telephone: 626.799.9898
Facsimile: 626.372.8288

All ideas, designs, arrangement and plans indicated or represented by this drawing are the property of Panda Express Inc. and were created for use on this specific project. None of these ideas, designs, arrangements or plans may be used by or disclosed to any person, firm, or corporation without the written permission of Panda Express Inc.

REVISIONS:		
OWNER REVISIONS		01-27-22

ISSUE DATE:		
ISSUE FOR PERMIT		01-29-21
ISSUE FOR BID		04-30-21
ISSUE FOR BID 2		11-02-21
ISSUE FOR BID (DT)		02-04-22

DRAWN BY: AE

PANDA PROJECT #: D8164

PANDA STORE #: -

ARCH PROJECT #: 261-321



MPW ENGINEERING, LLC
110 W. 7TH STREET • SUITE 600 • TULSA, OK 74109
(918) 582-4088 • (918) 582-4087 FAX



PANDA EXPRESS

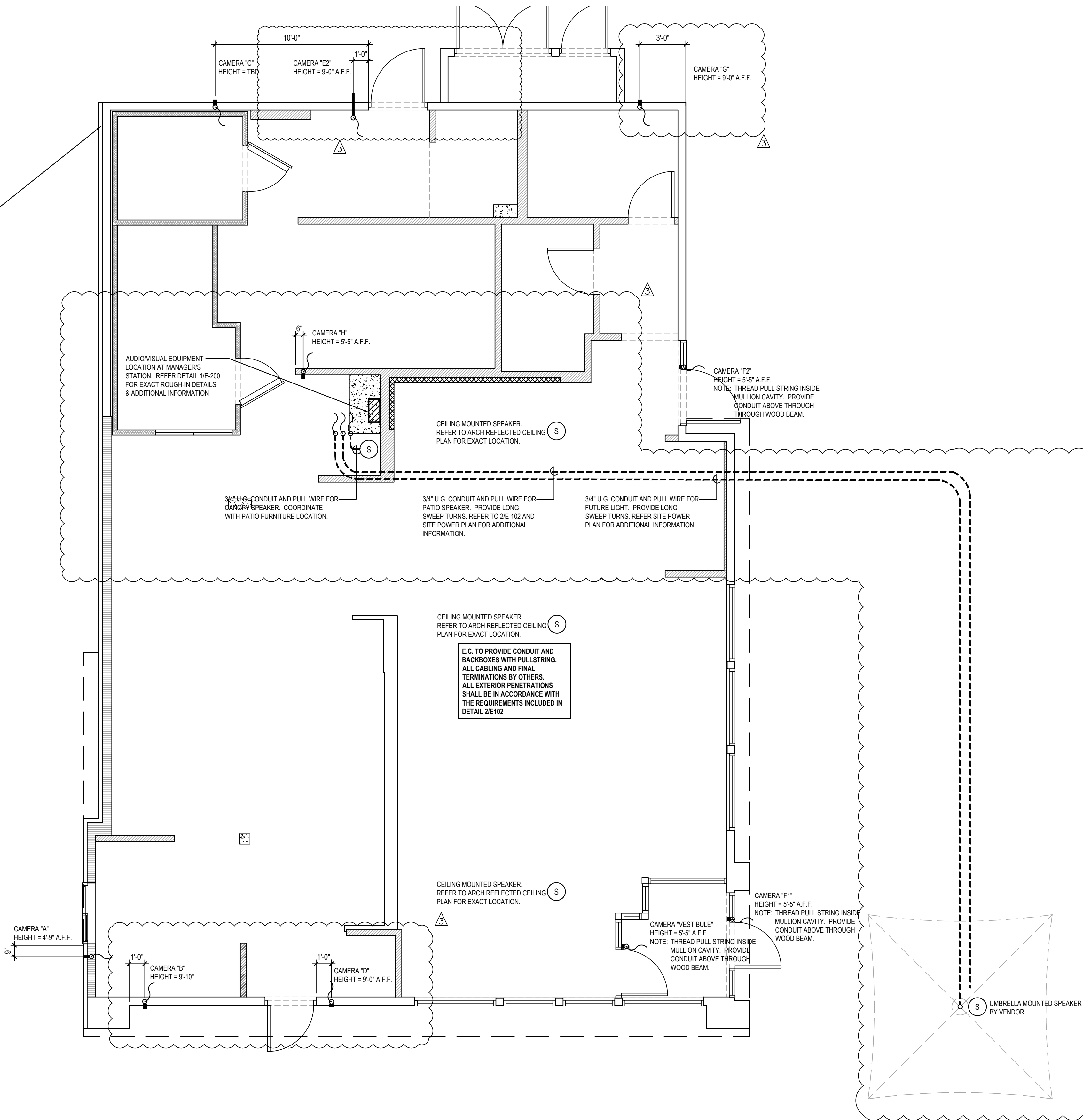
TRUE WARM & WELCOME
JEFFERSON AVE. & MORRIS DR.
NEWPORT NEWS, VA 23605

E-102

SECURITY CAMERA PLAN

Scale= 1/4" = 1'-0"

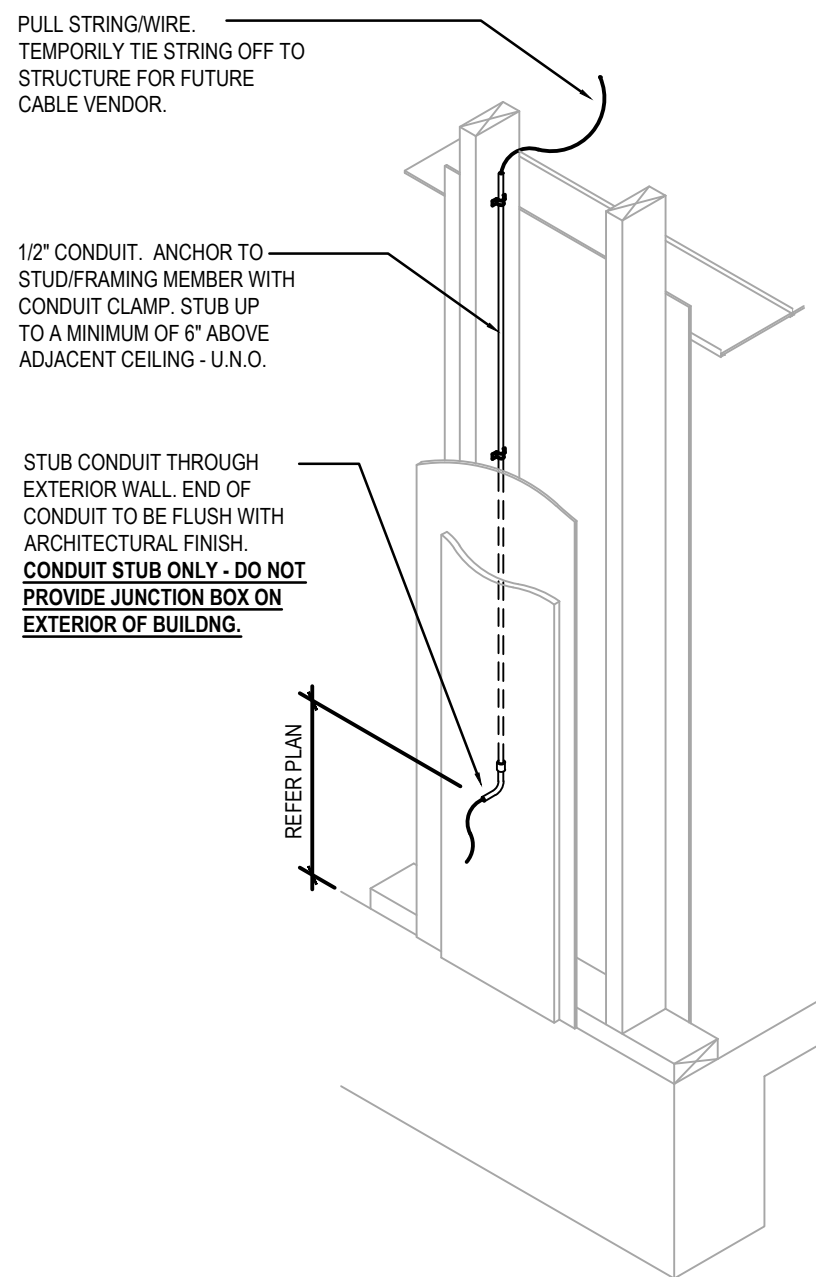
TRUE WARM & WELCOME 2300 R6



NOTE:
G.C./ELECTRICAL SUB TO
COORDINATE WITH PANDA
RESTAURANT PROJECT MANAGER
ON ANY CAMERA LOCATIONS TO BE
ADDED AND/OR OMITTED.

ACTUAL QUANTITY OF CAMERAS TO
BE VERIFIED BY G.C./ELECTRICAL
SUB WITH THE FOLLOWING CAMERA
VENDOR CONTACT.

JOHN STRAIN
INTERFACE SECURITY SYSTEMS
PHONE: 314-708-9878
EMAIL: john.strain@interfacesys.com



CONDUIT ROUGH-IN DETAIL 2

NOT TO SCALE E-102

SECURITY CAMERA PLAN 1

E-102

ISSUE FOR PERMIT 11-02-21

ISSUE FOR PERMIT 11-02-21