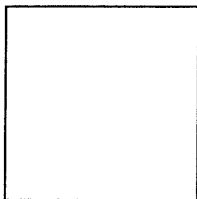


# CORNER RECORD

City of Livermore

Brief Legal Description: Lot 15, Book 177 of Maps at Page 61

Document Number CR 1722  
County of Alameda, California



## CORNER TYPE

Government Corner ☐ Control ☐  
Meander ☐ Property ☒  
Rancho ☐ Other ☐  
Date of Survey: March 23, 2002

## COORDINATES (Optional)

N. \_\_\_\_\_  
E. \_\_\_\_\_  
Zone \_\_\_\_\_ Datum \_\_\_\_\_  
Elev. \_\_\_\_\_

Corner \_\_\_\_\_ Left as found ☐ Found and tagged ☐ Established ☒ Reestablished ☐ Rebuilt ☐

Identification and type of corner found: Evidence used to identify or procedure used to establish or reestablish the corner:

Found standard city monuments on the monument line of Las Positas Road as shown on that certain map entitled "Tract 5406",  
filed in Book 177 of Maps at Pages 61 through 70, inclusive, in the Office of the Recorder of Alameda County. Found cut crosses  
in concrete sidewalk at the most westerly property corner and the most northerly property corner.

A description of the physical condition of the monument as found and as set or reset: \_\_\_\_\_

Set 3/4" iron pipe with tag reading "LS 6711" at the most southerly property corner and the most easterly property corner.

## SURVEYOR'S STATEMENT

This Corner Record was prepared by me or under my direction in conformance with the Land Surveyor's Act on April 9, 2002.

Signed \_\_\_\_\_ P.L.S. Number 6711



## COUNTY SURVEYOR'S STATEMENT

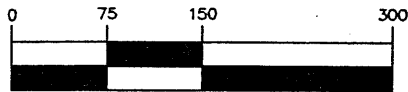
This Corner Record was received 9-06, 2002, and  
examined and filed 9-16, 2002.

Signed Russell R. Penland, Jr. Title County Surveyor



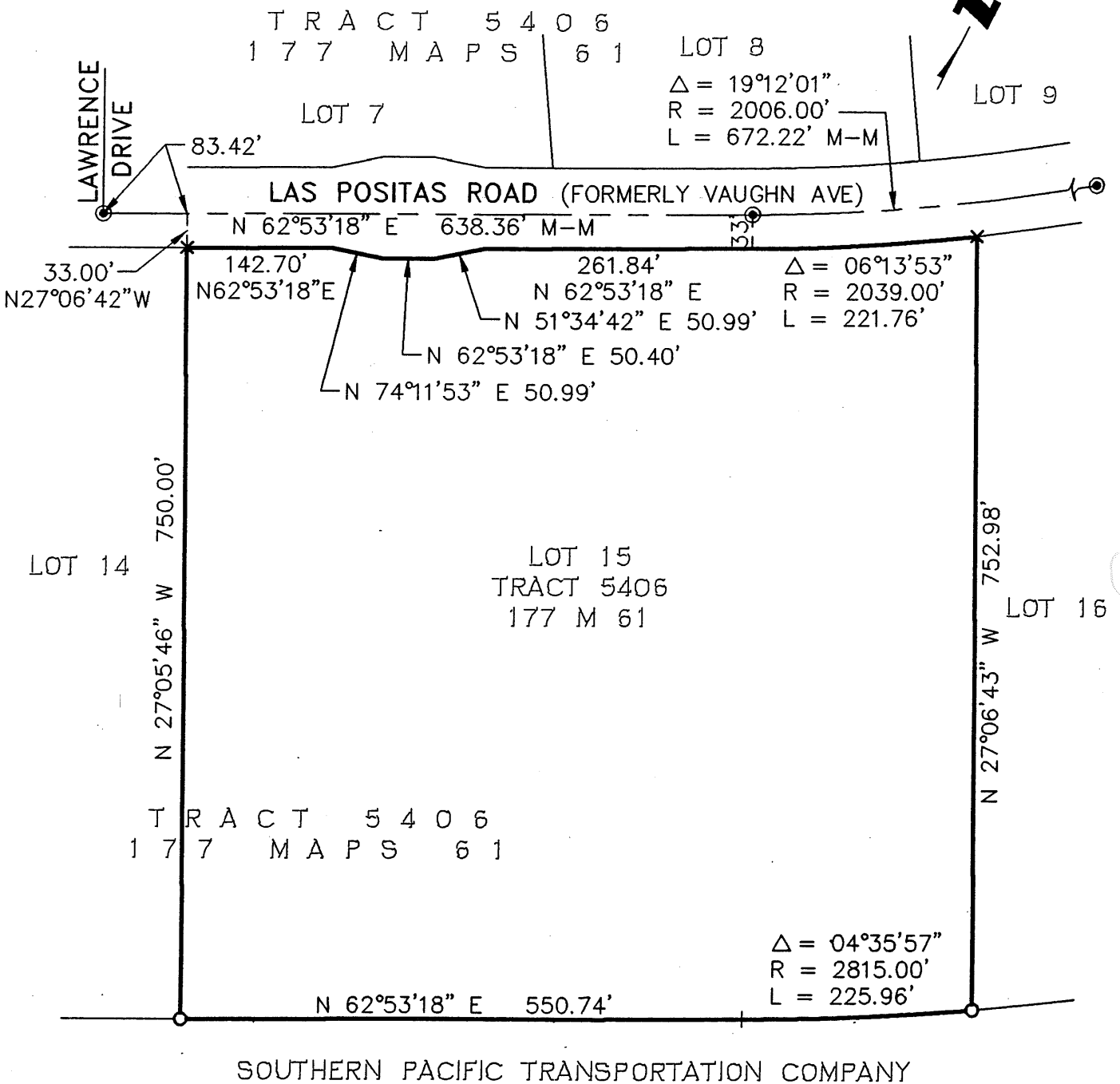
County Surveyor's Comment \_\_\_\_\_

# GRAPHIC SCALE



( IN FEET )

1 inch = 150 feet



## LEGEND

- — — — — SUBJECT PROPERTY
- — — — — MONUMENT LINE
- ⊙ FOUND CITY MONUMENT PER 177 M 61
- SET 3/4" IRON PIPE, TAGGED LS 6711
- x FOUND CUT CROSS IN SIDEWALK

LOT 15  
177 MAPS 61  
CITY OF LIVERMORE  
BKF NO: 20015114-50  
04/09/02