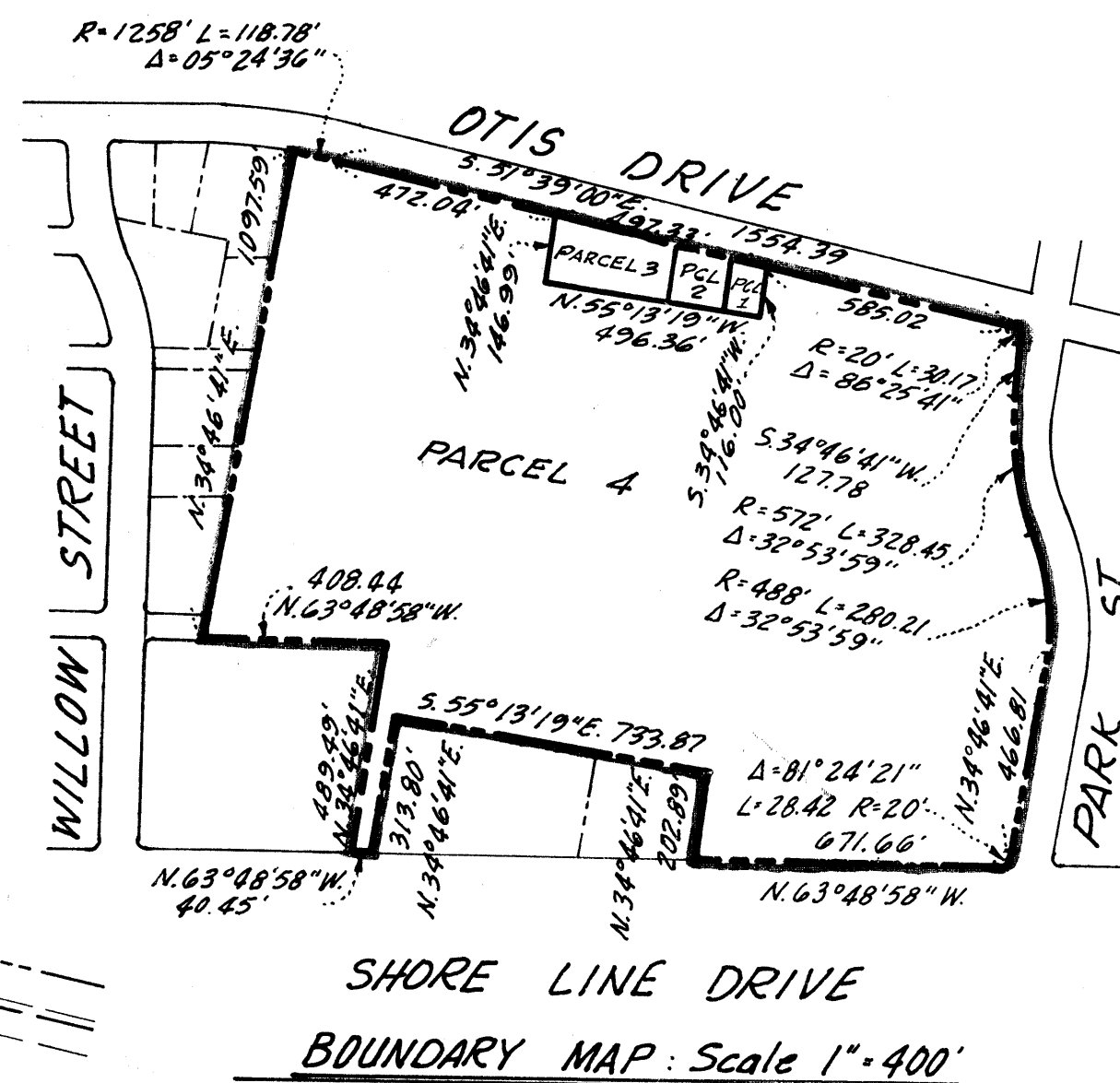
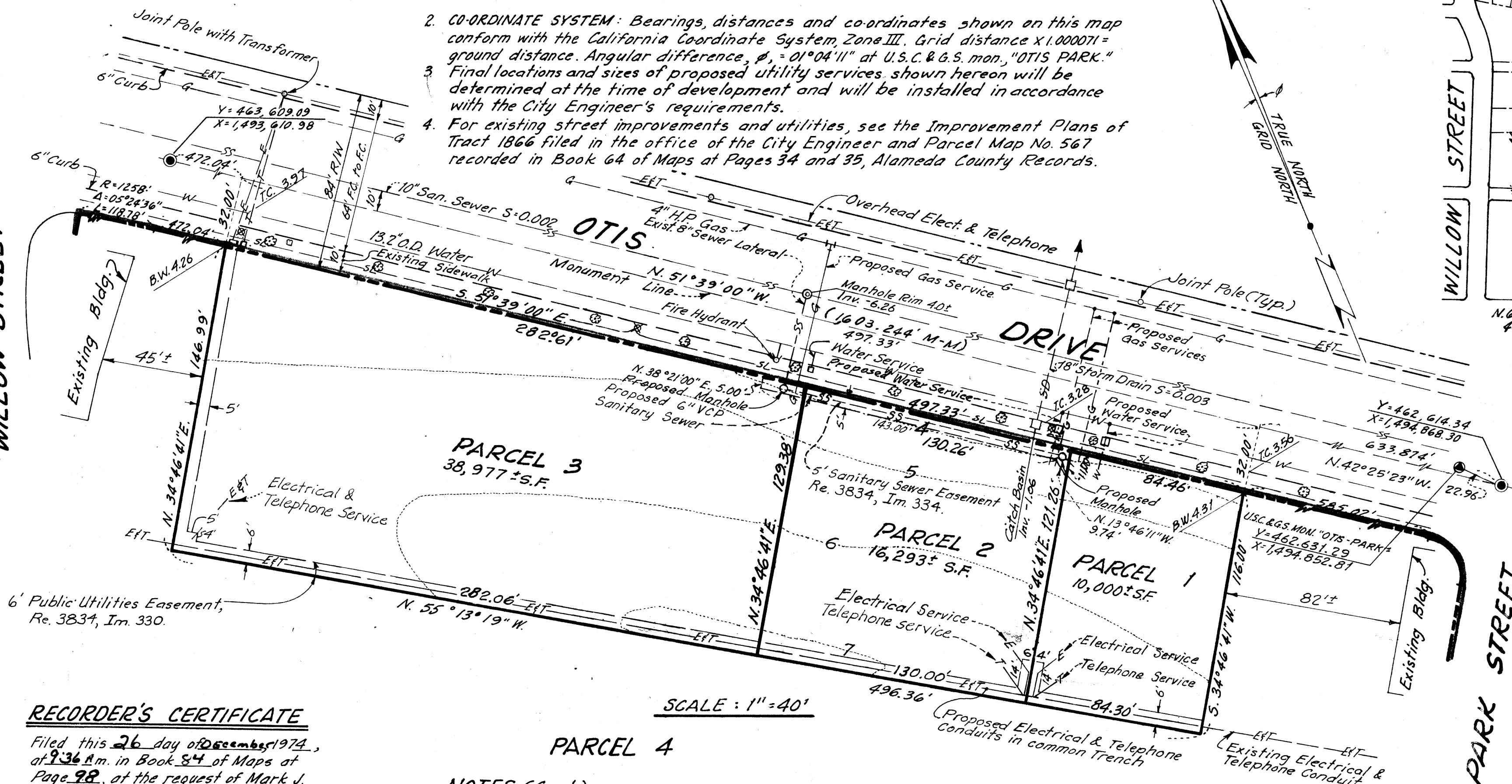


NOTES:

1. **BASIS OF BEARINGS:** The bearing, N. 51°39'00"W., of the monument line of Otis Drive as shown upon that certain map entitled, "TRACT 1866, SOUTH SHORE UNIT NO. 1, ALAMEDA, CALIFORNIA," recorded in Book 38 of Maps at Pages 50 thru 54, inclusive, Alameda County Records, was taken as the basis of bearings shown upon this map.
2. **CO-ORDINATE SYSTEM:** Bearings, distances and co-ordinates shown on this map conform with the California Coordinate System, Zone III. Grid distance X1.000071 = ground distance. Angular difference, ϕ , = 01°04'11" at U.S.C. & G.S. mon., "OTIS PARK."
3. Final locations and sizes of proposed utility services shown hereon will be determined at the time of development and will be installed in accordance with the City Engineer's requirements.
4. For existing street improvements and utilities, see the Improvement Plans of Tract 1866 filed in the office of the City Engineer and Parcel Map No. 567 recorded in Book 64 of Maps at Pages 34 and 35, Alameda County Records.



LEGEND

- M-M Monument to Monument distance
- Std. City Survey Monument per 38 Maps, 50-54.
- 7 Existing ground contours
- T.C. Top of Curb
- F.C. Face of Curb
- ⊗ Electrolier
- ⊗ Existing Street Trees
- SL Street Light Conduit
- BW Back of Walk

RECORDER'S CERTIFICATE

Filed this 26 day of December 1974, at 9:36 A.M. in Book 84 of Maps at Page 98, at the request of Mark J. Hanna.

By: Jack G. Blue County Recorder
Susan Leeper Deputy

OWNER'S CERTIFICATE

The undersigned, owner of the land within the blue lines of the herein embodied map, consents to the preparation and recordation of this map.

SOUTH SHORE CENTER, INC.
 By: Cliff Braudin Date 5-8-74

NOTES (Cont.)

5. A driveway will be provided for each Parcel and will be constructed in accordance with the City Engineer's requirements. The width of each driveway will be determined at the time of development.
6. All improvements and utilities are existing unless otherwise shown.
7. Elevations are based on City of Alameda Datum. Bench Mark - Standard City Survey Monument at Willow St. and Otis Drive on Monument Line of Willow Street Northerly of Intersection; Elevation 2.419.

SURVEYOR'S CERTIFICATE

This map was prepared by me or under my direction and was compiled from record data in conformance with the requirements of the Subdivision Map Act at the request of South Shore Center, Inc. in April, 1974. I hereby certify that it conforms to the approved tentative map and the conditions of approval thereof, that all provisions of applicable state law and local ordinances have been complied with.

Calvin M. Jones
 Calvin M. Jones, R.C.E. No. 7542

CITY ENGINEER'S CERTIFICATE

This map has been examined this 19th day of December 1974, for conformance with the requirements of Section 11575 of the Subdivision Map Act. This map meets the requirements of the Planning Board and of the City Council.

M. J. Hanna
 Mark J. Hanna
 R.C.E. No. 7061
 City Engineer, City of Alameda

★ USE WITH CAUTION ★
 THIS IS A PUBLIC WORKS DEPARTMENT WORKING COPY OF AN OFFICIAL MAP ON FILE IN THE OFFICE OF THE COUNTY RECORDER, COUNTY OF ALAMEDA. OFFICE INFORMATION OR CALCULATIONS MAY HAVE BEEN ADDED HEREON.

PARCEL MAP NO. 1445

A DIVISION OF PARCEL "B" OF PARCEL MAP NO. 761
 ALAMEDA, CALIFORNIA

FOR: SOUTH SHORE CENTER, INC.
 BY: JONES - TILLSON & ASSOCIATES Palo Alto, California
 DATE: May 22, 1974 SCALE: As Shown 1 Sheet only

32B 56D

FILED 12-26-74 84/98