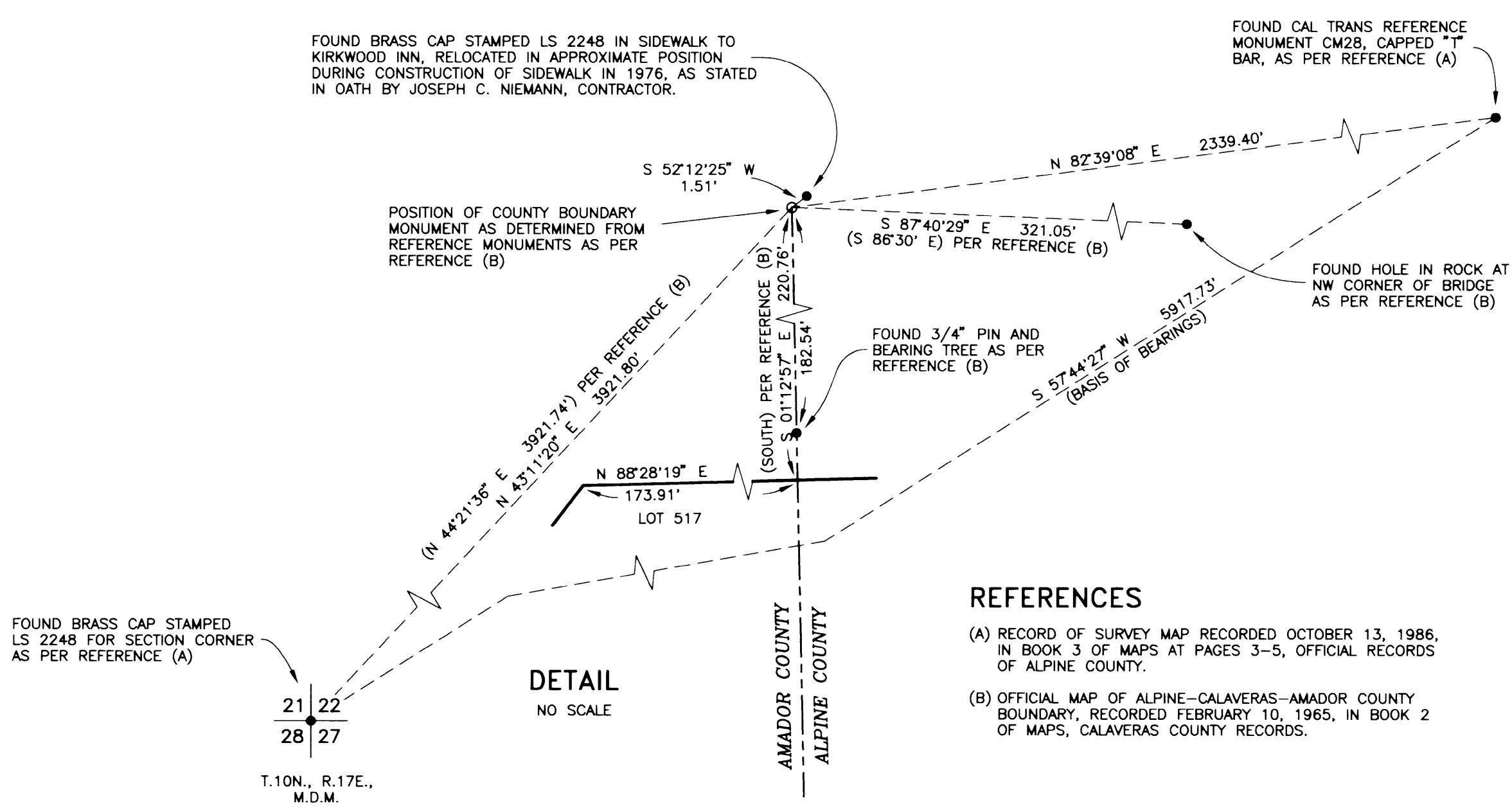


CURVE TABLE

CURVE	DELTA	RADIUS	LENGTH	TANGENT	CHORD	BEARING
C1	08°40'22"	277.00'	41.93'	21.00'	41.89'	N 32°27'02" W
C2	07°54'26"	250.00'	34.50'	17.28'	34.47'	S 32°50'00" E
C3	09°43'05"	250.00'	42.40'	21.25'	42.35'	S 24°01'14" E
C4	17°37'31"	250.00'	76.90'	38.76'	76.60'	S 27°58'27" E
C5	01°50'52"	277.00'	8.93'	4.47'	8.93'	S 35°51'46" E
C6	17°37'31"	223.00'	68.60'	34.57'	68.33'	S 27°58'27" E
C7	55°29'08"	25.00'	24.21'	13.15'	23.28'	N 62°40'54" W
C8	108°44'14"	25.00'	47.45'	34.88'	40.64'	N 35°12'25" E
C9	99°35'22"	50.00'	86.91'	59.16'	76.37'	S 40°37'47" E
C10	05°28'23"	77.00'	7.36'	3.68'	7.35'	S 87°41'17" E
C11	34°52'16"	77.00'	46.86'	24.18'	46.14'	S 67°30'58" E
C12	56°13'41"	77.00'	75.56'	41.14'	72.57'	S 21°58'00" E
C13	96°34'19"	77.00'	129.78'	86.38'	114.96'	S 42°08'19" E
C14	99°35'22"	23.00'	39.98'	27.21'	35.13'	S 40°37'47" E
C15	24°58'24"	62.00'	27.02'	13.73'	26.81'	N 03°19'18" W
C16	24°24'42"	89.00'	37.92'	19.25'	37.63'	N 03°02'27" W
C17	60°27'21"	50.00'	52.76'	29.13'	50.34'	N 24°04'50" W
C18	39°05'26"	50.00'	34.11'	17.75'	33.46'	S 04°17'55" W
C19	20°58'10"	50.00'	18.30'	9.25'	18.20'	S 43°49'26" E
C20	25°07'39"	50.00'	21.93'	11.14'	21.75'	S 20°46'32" E
C21	59°57'47"	50.00'	52.33'	28.85'	49.97'	S 21°46'11" W
C22	152°05'33"	50.00'	132.73'	201.23'	97.05'	N 52°12'09" W
C23	258°09'09"	50.00'	225.28'	61.58'	77.63'	S 74°46'03" W
C24	28°41'19"	70.00'	35.05'	17.90'	34.68'	S 73°16'28" E
C25	28°41'19"	50.00'	25.04'	12.79'	24.77'	S 73°16'28" E
C26	17°23'30"	250.00'	75.89'	38.24'	75.59'	S 10°27'57" E
C27	17°23'30"	277.00'	84.08'	42.37'	83.76'	S 10°27'57" E
C28	17°23'30"	223.00'	67.69'	34.11'	67.43'	S 10°27'57" E
C29	12°57'42"	500.00'	113.11'	56.80'	112.87'	S 04°42'39" W
C30	10°23'51"	527.00'	95.64'	47.95'	95.50'	S 03°25'44" W
C31	01°21'17"	473.00'	11.18'	5.59'	11.18'	S 01°05'33" E
C32	11°36'25"	473.00'	95.82'	48.07'	95.66'	S 05°23'18" W
C33	12°57'42"	473.00'	107.00'	53.73'	106.78'	S 04°42'39" W
C34	78°19'18"	25.00'	34.17'	20.36'	31.58'	N 30°32'00" W
C35	121°52'51"	20.00'	42.54'	35.99'	34.96'	N 65°31'51" E
C36	14°55'30"	500.00'	130.25'	65.49'	129.88'	N 03°43'45" E
C37	08°19'26"	473.00'	68.72'	34.42'	68.66'	N 00°25'43" E
C38	11°13'00"	527.00'	103.17'	51.75'	103.00'	N 05°35'00" E
C39	03°42'30"	527.00'	34.11'	17.06'	34.10'	N 01°52'45" W
C40	14°55'30"	527.00'	137.28'	69.03'	136.89'	N 03°43'45" E
C41	18°21'50"	375.00'	120.19'	60.62'	119.68'	S 05°26'55" W
C42	03°48'11"	402.00'	26.68'	13.35'	26.68'	S 01°49'54" E
C43	14°33'39"	402.00'	102.16'	51.36'	101.89'	S 07°21'01" W
C44	18°21'50"	402.00'	128.85'	64.98'	128.29'	S 05°26'55" W
C45	02°35'24"	348.00'	15.73'	7.87'	15.73'	S 02°26'18" E
C46	15°46'26"	348.00'	95.81'	48.21'	95.50'	S 06°44'37" W
C47	18°21'50"	348.00'	111.54'	56.25'	111.06'	S 05°26'55" W
C48	27°54'50"	300.00'	146.16'	74.56'	144.72'	N 00°40'25" E
C49	17°57'27"	273.00'	85.56'	43.14'	85.21'	N 05°39'07" E
C50	09°57'23"	273.00'	47.44'	23.78'	47.38'	N 08°18'18" W
C51	27°54'50"	273.00'	133.00'	67.85'	131.69'	N 00°40'25" E
C52	08°06'10"	327.00'	46.24'	23.16'	46.21'	N 10°34'45" E
C53	19°48'40"	327.00'	113.07'	57.10'	112.50'	N 03°22'40" W
C54	27°54'50"	327.00'	159.31'	81.27'	157.74'	N 00°40'25" E
C55	08°15'10"	1000.00'	144.04'	72.14'	143.91'	N 17°24'35" W
C56	05°44'42"	973.00'	97.56'	48.82'	97.52'	N 16°09'21" W
C57	02°30'28"	973.00'	42.59'	21.30'	42.58'	N 20°16'56" W
C58	08°15'10"	973.00'	140.15'	70.20'	140.03'	N 17°24'35" W
C59	01°48'33"	1027.00'	32.43'	16.22'	32.43'	N 14°11'17" W
C60	05°01'27"	1027.00'	90.05'	45.06'	90.03'	N 17°36'17" W
C61	01°25'10"	1027.00'	25.44'	12.72'	25.44'	N 20°49'35" W
C62	08°15'10"	1027.00'	147.93'	74.09'	147.80'	N 17°24'35" W
C63	23°30'10"	400.00'	164.08'	83.21'	162.93'	N 33°17'15" W
C64	04°28'22"	373.00'	29.12'	14.57'	29.11'	N 23°46'21" W
C65	06°55'00"	366.00'	44.18'	22.12'	44.16'	N 29°28'01" W
C66	12°06'49"	373.00'	78.86'	39.58'	78.71'	N 38°58'56" W
C67	11°27'42"	427.00'	85.42'	42.85'	85.28'	N 27°16'01" W
C68	12°02'28"	427.00'	89.74'	45.03'	89.57'	N 39°01'06" W
C69	23°30'10"	427.00'	175.16'	88.83'	173.93'	N 33°17'15" W
C70	136°18'16"	125.00'	297.37'	311.77'	232.04'	S 66°48'32" W
C71	136°18'16"	98.00'	233.14'	244.43'	181.92'	S 66°48'32" W
C72	10°34'26"	152.00'	28.05'	14.07'	28.01'	N 50°19'33" W
C73	48°15'14"	152.00'	128.01'	68.08'	124.26'	N 79°44'23" W
C74	07°32'40"	152.00'	20.01'	10.02'	20.00'	S 72°21'40" W
C75	22°19'32"	152.00'	59.23'	29.99'	58.85'	S 57°25'34" W
C76	27°17'59"	152.00'	72.42'	36.91'	71.74'	S 27°08'55" W
C77	14°50'31"	152.00'	39.37'	19.80'	39.26'	S 06°04'40" W
C78	136°18'16"	152.00'	361.60'	379.11'	282.17'	S 66°48'32" W
C79	100°51'23"	90.00'	158.42'	108.90'	138.75'	S 32°47'21" W
C80	100°51'23"	110.00'	193.63'	133.10'	169.58'	S 32°47'21" W
C81	25°34'35"	160.00'	71.42'	36.32'	70.83'	N 70°25'45" E
C82	05°49'38"	140.00'	14.24'	7.13'	14.23'	N 80°18'13" E
C83	44°48'12"	340.00'	265.87'	140.15'	259.15'	S 23°44'42" E
C84	01°57'20"	313.00'	10.68'	5.34'	10.68'	S 02°19'16" E
C85	25°28'14"	313.00'	139.14'	70.74'	138.00'	S 16°02'03" E
C86	17°22'38"	313.00'	94.93'	47.83'	94.57'	S 37°27'29" E
C87	44°48'12"	313.00'	244.76'	129.02'	238.57'	S 23°44'42" E
C88	03°09'21"	367.00'	20.21'	10.11'	20.21'	S 02°55'16" E
C89	15°02'58"	367.00'	96.40'	48.48'	96.12'	S 12°01'26" E
C90	11°35'02"	367.00'	74.20'	37.23'	74.07'	S 25°20'26" E
C91	07°35'59"	367.00'	48.68'	24.38'	48.64'	S 34°55'56" E
C92	37°23'20"	367.00'	239.49'	124.18'	235.26'	S 20°02'16" E
C93	07°24'52"	374.00'	48.40'	24.23'	48.36'	S 42°26'22" E
C94	30°43'56"	250.00'	134.09'	68.70'	132.49'	N 30°46'50" W
C95	01°17'37"	277.00'	6.25'	3.13'	6.25'	N 45°29'59" W
C96	29°26'19"	277.00'	142.32'	72.77'	140.76'	N 30°08'01" W
C97	30°43'56"	277.00'	148.58'	76.12'	146.80'	N 30°46'50" W
C98	30°43'56"	223.00'	119.61'	61.28'	118.18'	N 30°46'50" W
C99	63°23'38"	100.00'	110.64'	61.75'	105.09'	S 47°06'41" E
C100	38°06'52"	73.00'	48.56'	25.22'	47.67'	S 34°28'18" E
C101	12°01'06"	127.00'	26.64'	13.37'	26.59'	S 21°25'25" E
C102	42°15'41"	127.00'	93.68'	49.08'	91.57'	S 48°33'49" E
C103	54°16'48"	127.00'	120.32'	65.10'	115.87'	S 42°33'15" E
C104	07°14'32"	300.00'	37.92'	18.99'	37.89'	N 26°09'22" W



REFERENCES

- (A) RECORD OF SURVEY MAP RECORDED OCTOBER 13, 1986, IN BOOK 3 OF MAPS AT PAGES 3-5, OFFICIAL RECORDS OF ALPINE COUNTY.
- (B) OFFICIAL MAP OF ALPINE-CALAVERAS-AMADOR COUNTY BOUNDARY, RECORDED FEBRUARY 10, 1965, IN BOOK 2 OF MAPS, CALAVERAS COUNTY RECORDS.

LINE TABLE

LINE	BEARING	DISTANCE	LINE	BEARING	DISTANCE
L1	N 15°48'30" W	62.45'	L27	N 29°46'38" W	268.46'
L2	N 87°37'07" W	65.74'	L28	N 10°23'22" W	333.31'
L3	N 58°55'48" W	72.24'	L29	N 14°26'03" E	139.58'
L4	N 87°37'07" W	57.19'	L30	N 39°44'51" E	10.01'
L5	N 58°55'48" W	76.46'	L31	S 85°34'12" W	28.26'
L6	N 16°33'30" W	41.93'	L32	S 65°50'41" E	41.76'
L7	N 19°09'42" W	36.41'	L33	N 44°18'51" W	102.77'
L8	N 11°11'30" E	25.39'	L34	N 86°53'18" W	43.18'
L9	S 78°48'30" E	27.37'	L35	N 58°19'39" W	26.05'
L10	S 86°16'00" W	7.00'	L36	N 77°11'01" W	62.89'
L11	N 14°37'50" E	32.69'	L37	N 60°07'01" E	88.68'
L12	S 63°59'28" W (R)	7.00'	L38	S 82°21'51" E	83.98'
L13	N 57°04'29" E (R)	7.00'	L39	S 86°50'14" E	28.83'
L14	N 45°02'20" W	19.50'	L40	S 68°06'03" E	100.24'
L15	N 17°38'20" W	64.48'	L41	N 83°11'36" W	130.22'
L16	N 17°38'20" W	64.48'	L42	S 74°32'35" W	58.63'
L17	N 88°39'24" E	7.00'	L43	N 58°34'48" E	71.55'
L18	S 51°16'04" W (R)	7.00'	L44	N 74°15'24" E	113.69'
L19	S 43°51'12" W	7.00'	L45	N 45°47'43" E	71.40'
L20	S 46°08'48" E	50.58'	L46	N 21°32'10" W	112.75'
L21	S 46°08'48" E	27.80'	L47	N 52°23'54" W	87.43'
L22	S 46°08'48" E	17.73'	L48	N 52°23'54" W	43.08'
L23	S 81°55'12" E	7.38'	L49	N 29°11'53" W	50.99'
L24	N 52°24'21" W	162.77'	L50	N 43°50'47" W	46.48'
L25	N 22°05'16" W	289.90'	L51	S 40°36'43" E	38.55'
L26	N 58°55'48" W	2.02'	L52	S 44°43'46" E	78.56'

EAST MEADOWS SUBDIVISION
UNIT 2

BEING A PORTION OF SECTION 22,
T. 10 N., R. 17 E., M.D.M.
AMADOR COUNTY, CALIFORNIA
SHEET NO. 3 OF 3 SHEETS

CURVE	DELTA	RADIUS	LENGTH	TANGENT	CHORD	BEARING
C105	17°58'52"	152.00'	47.70'	24.05'	47.51'	S 49°47'21" W
C106	42°34'27"	50.00'	37.15'	19.48'	36.30'	N 65°36'05" W
C107	06°26'37"	527.00'	59.27'	29.67'	59.24'	N 07°58'11" E
C108	10°32'35"	402.00'	73.97'	37.09'	73.87'	S 09°21'33" W
C109	05°41'20"	273.00'	27.11'	13.56'	27.10'	N 00°28'57" W
C110	24°11'25"	277.00'	116.95'	59.36'	116.08'	N 32°45'28" W
C111	03°48'57"	973.00'	64.80'	32.41'	64.79'	N 17°07'13" W
C112	01°06'37"	953.00'	18.47'	9.23'	18.47'	N 20°58'52" W
C113	145°47'50"	33.32'	84.77'	108.28'	63.68'	S 54°04'07" E
C114	48°01'40"	20.00'	16.76'	8.91'	16.28'	N 05°11'02" W
C115	19°42'37"	98.00'	33.71'	17.02'	33.55'	S 83°57'43" W
C116	62°48'15"	33.32'	36.52'	20.34'	34.72'	N 13°19'39" W
C117	05°27'54"	152.00'	14.50'	7.25'	14.49'	S 43°31'51" W