

BK 38 Pg 95

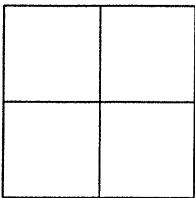
CORNER RECORD

Document Number CR 4364

City of OAKLAND

County of ALAMEDA, California

Brief Legal Description IRON PIN MONUMENT LOCATED WITHIN THE INTERSECTION OF WEST GRAND AVENUE AND WEST STREET. (85E35-R)



CORNER RECORD

Government Corner ☐ Control ☒
Meander ☐ Property ☐
Rancho ☐ Other ☐
Date of Survey 11/3/10

COORDINATES
(Optional)

N. _____
E. _____
Zone _____ Datum _____
Elev. _____

Corner — Left as found ☒ Found and tagged ☐ Established ☐ Reestablished ☐ Rebuilt ☐

Identification and type of corner found: Evidence used to identify or procedure used to establish or reestablish the corner:
FOUND IRON PIN MONUMENT LOCATED WITHIN THE INTERSECTION OF WEST GRAND AVENUE AND WEST STREET. AS SHOWN ON CITY OF OAKLAND MONUMENT MAP, PAGE 237.

THIS POINT WAS REFERENCED PRIOR TO A CONSTRUCTION PROJECT IN THE VICINITY.

A description of the physical condition of the monument as found and as set or reset:
FOUND AND SET POINTS AS SHOWN ON PAGE 2.

SURVEYOR'S STATEMENT

This Corner Record was prepared by me or under my direction in conformance with the Land Surveyors' Act on NOVEMBER 4, 2010.

Signed Vincent H. Cunha L.S. Number LS 4520

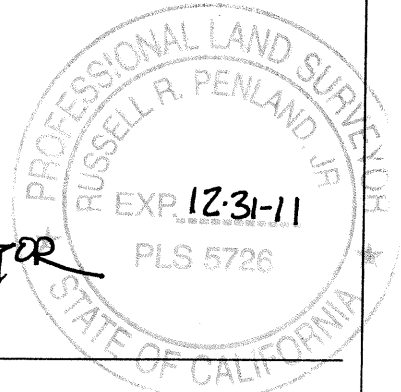


COUNTY SURVEYOR'S STATEMENT

This Corner Record was received 12-2-2010 and examined

and filed 11-7-2011.

Signed Russell R. Penland Title COUNTY SURVEYOR



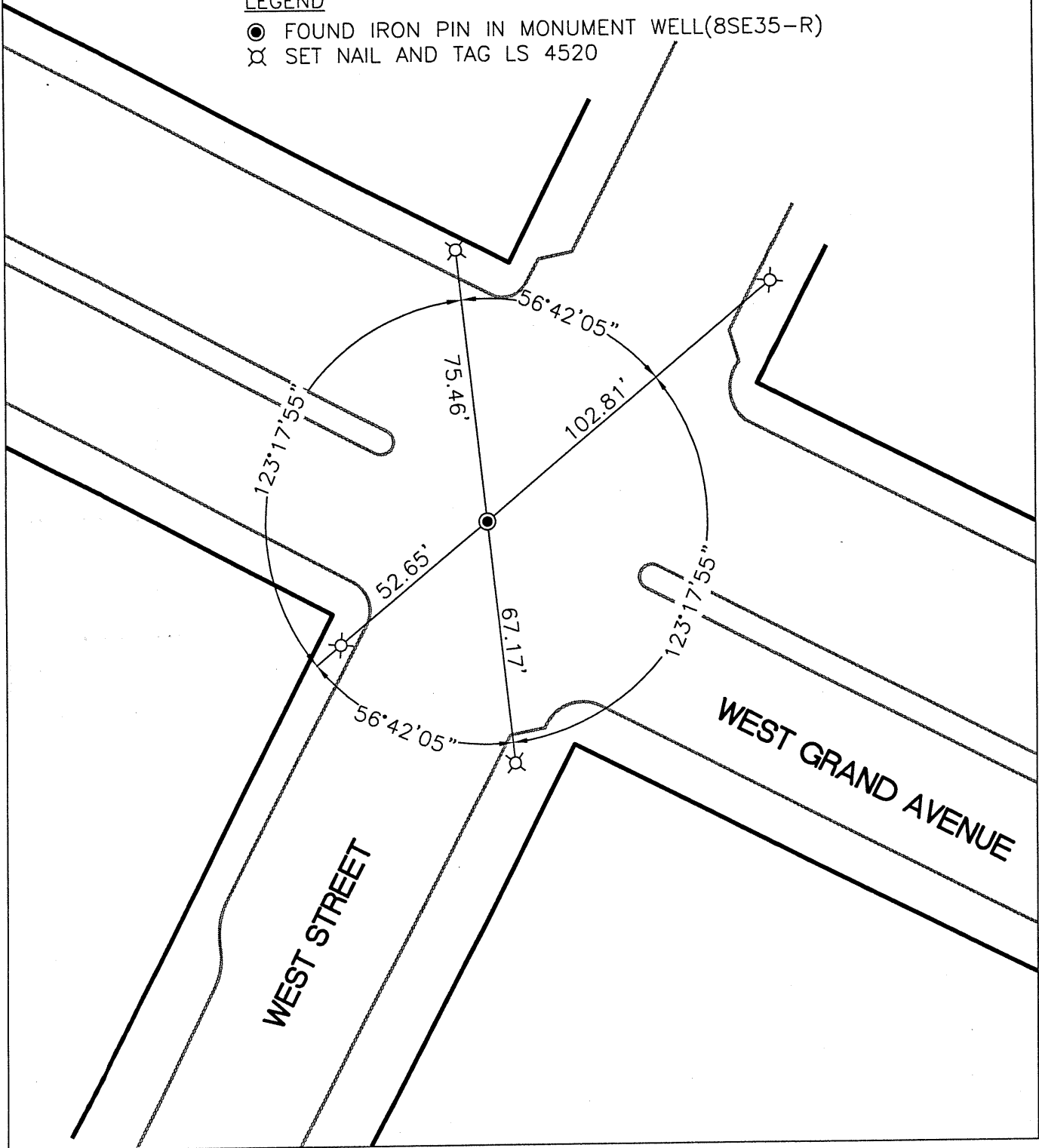
County Surveyor's Comment

CE62L4

SCALE : 1"=40'

LEGEND

- FOUND IRON PIN IN MONUMENT WELL(8SE35-R)
- ⊗ SET NAIL AND TAG LS 4520



209076\WEST GRAND\CR-3