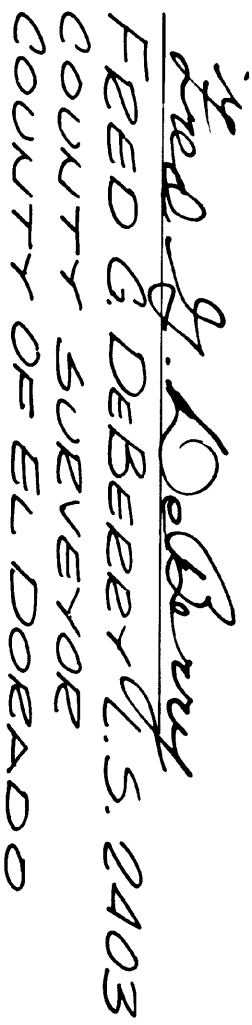


RICHARD J. KOVACH L.S. 4434

THIS MAP CORRECTLY REPRESENTS A SUEVET MADE BY ME OR UNDER MY DIRECTION IN CONFORMANCE WITH THE REQUIREMENTS OF THE LAND SURVEYORS ACT AT THE REQUEST OF CHARLES POTOL IN JUNE, 1979.



THIS MAP HAS BEEN EXAMINED FOR CONFORMANCE WITH THE REQUIREMENTS OF THE LAND SURRENDER ACT THIS 20<sup>TH</sup> DAY OF August 1979.



FILED THIS 20<sup>th</sup> DAY OF August 1979, AT 12:40 P.M., IN BOOK 7 OF RECORD OF SEVEREWS, AT PAGE 81 AT THE REQUEST OF CHARLES POTTER.

Doc. No. 38569

Deputy Care  
Dorothy Care  
County Recorder  
County of El Dorado

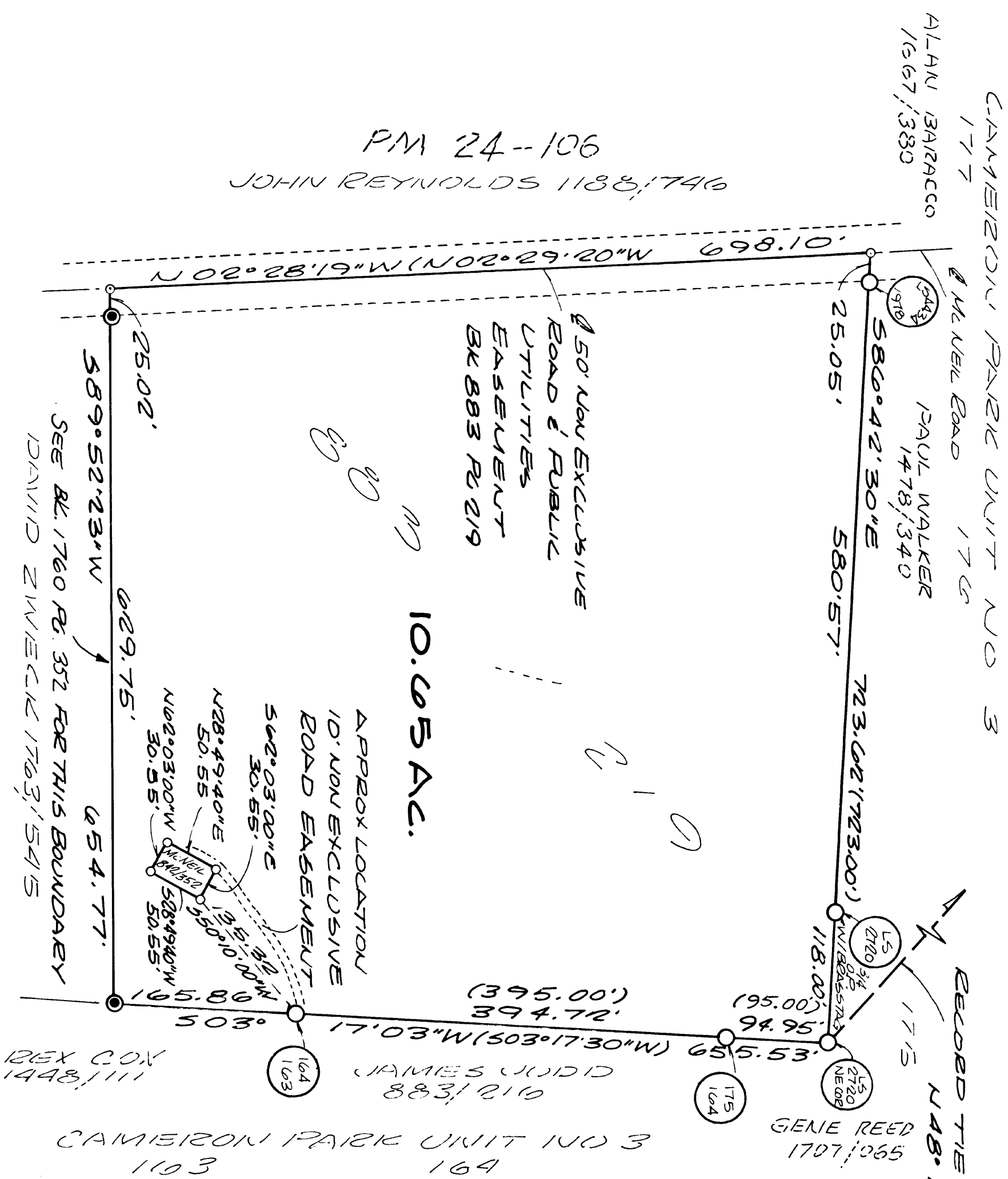
By Marion Land  
DEPUTY

THE RUBBER OF THIS RECORDED  
OF SURVEY 16 TO  
DELINEATE THE BOUNDARY  
DESCRIBED IN BK. 883  
Pg. 219 AND Bk. 1760  
Pg. 352

PM 24-106  
SD C-38

**BASIS OF BEARING:**  
THE MERIDIAN OF THIS  
SUEVER IS IDENTICAL  
TO THAT OF SUBDIVISION  
MAP C-38 AND IS TRUE  
NORTH

- EO 3/4" C.I.P. STAMPED LS 4434-1979
- EO 3/4" C.I.P. STAMPED AS INDICATED
- COMPUTED POINT NOTHING EO OR SET



דוד משה

EXISTING ANSWERS PAGE NO 86-520-03

7-81