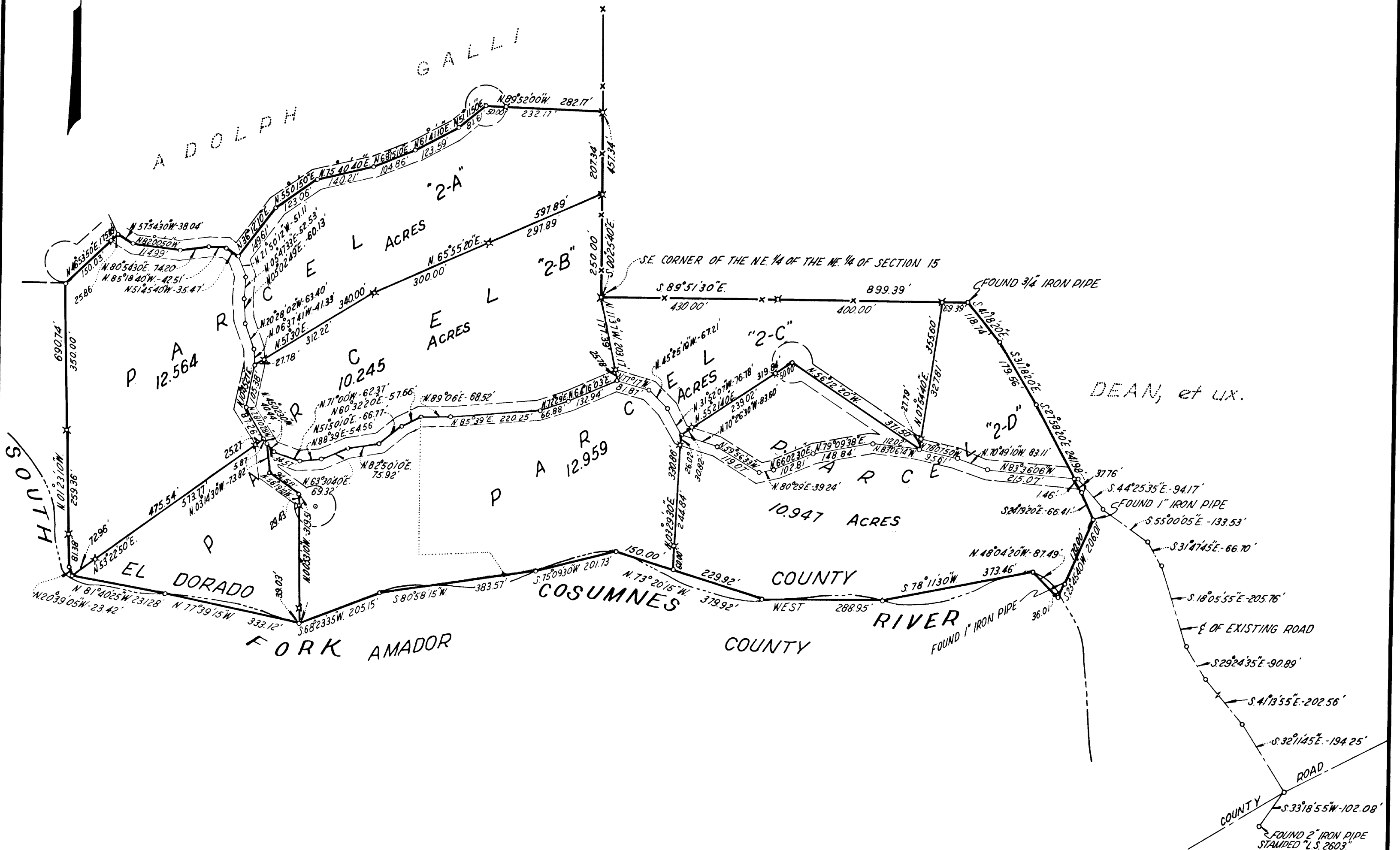


1-151

RECORD OF SURVEY
A PORTION OF THE N.E. 1/4 OF SECTION 15 & A PORTION OF THE
N.W. 1/4 OF SECTION 14, T.8N, R.11E, M.D.M.
PROPERTY OF ELVETZIA HOPKINS
EL DORADO COUNTY, CALIFORNIA
FEBRUARY 1961 SCALE: 1" = 200'
RAUPP, CHRISTENSEN & KENDALL
SURVEYORS & ENGINEERS



NOTE:
The meridian of this survey is identical with the meridian of the "RECORD OF SURVEY" of a portion of Section 15, T.8N, R.11E, M.D.M., recorded in the office of the Recorder of El Dorado County on January 31, 1961, in Book 1 of Record of Surveys at page 126.

LEGEND:
✕ Found 1/2 rebar

1-151

SURVEYOR'S CERTIFICATE

This map correctly represents a survey made by me or under my direction in conformance with the requirements of Chapter 15 of Division 3 of the Business and Professions Code at the request of Elvetzia Hopkins in February, 1961.

William H. Raupp
William H. Raupp L.S. 2720

COUNTY SURVEYOR'S CERTIFICATE

This map has been examined for conformance with the requirements of Chapter 15 of Division 3 of the Business and Professions Code this 31st day of March, 1961.

Edmund J. Kent
El Dorado County Surveyor

RECORDER'S CERTIFICATE

Filed for record this 7th day of June, 1961, at 3:08 P.M. in Book of _____ at page 136 at the request of William H. Raupp.

#7064

James W. Sweeney
El Dorado County Recorder