

# CORNER RECORD

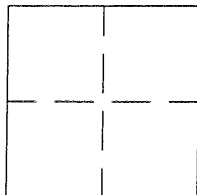
BK 54 PG 31  
CR 2783

APN No. 84B - 370 - 5 - 18 (Optional)

Document Number \_\_\_\_\_  
County of ALAMEDA, California

Unincorporated Castro Valley

Brief Legal Description A Monument with a pin in concrete on the street Titan Way.



## CORNER TYPE

Government Corner ☐ Control ☐  
Meander ☐ Property ☐  
Rancho ☐ Other ☒  
Date of Survey July 26, 2005

## COORDINATES (Optional)

N. \_\_\_\_\_  
E. \_\_\_\_\_  
Zone \_\_\_\_\_ Datum \_\_\_\_\_  
Elev. \_\_\_\_\_

Corner - Left as found ☒ Found and tagged ☐ Established ☐ Reestablished ☐ Rebuilt ☐

In compliance with Section 8771 of the Professional Land Surveyors' Act, this corner record is being filed to  
ESTABLISH X / REESTABLISH \_\_\_\_\_ the position of an existing monument PRIOR X / SUBSEQUENT \_\_\_\_\_  
to street or highway reconstruction. (Use this portion only when applicable.)

Identification and type of corner found: Evidence used to identify or procedure used to establish or reestablish the corner:  
THE MONUMENT DESCRIBED BELOW WAS REFERENCED BY STRAIGHT LINES THROUGH  
THE MONUMENT PIN. SEE DRAWING ON NEXT PAGE.

A description of the physical condition of the monument as found and as set or reset: A PIN IN A CONCRETE  
POST IN A STANDARD MONUMENT WELL WAS FOUND IN GOOD CONDITION ON  
TITAN WAY. THIS MONUMENT IS IN DANGER OF BEING DESTROYED DUE  
TO ROAD CONSTRUCTION.

## SURVEYOR'S STATEMENT

This Corner Record was prepared by me or under my direction in conformance with  
the Land Surveyors' Act on August 11, 2005.

Signed Robert A. Machado L.S. or R.C.E. Number 7380



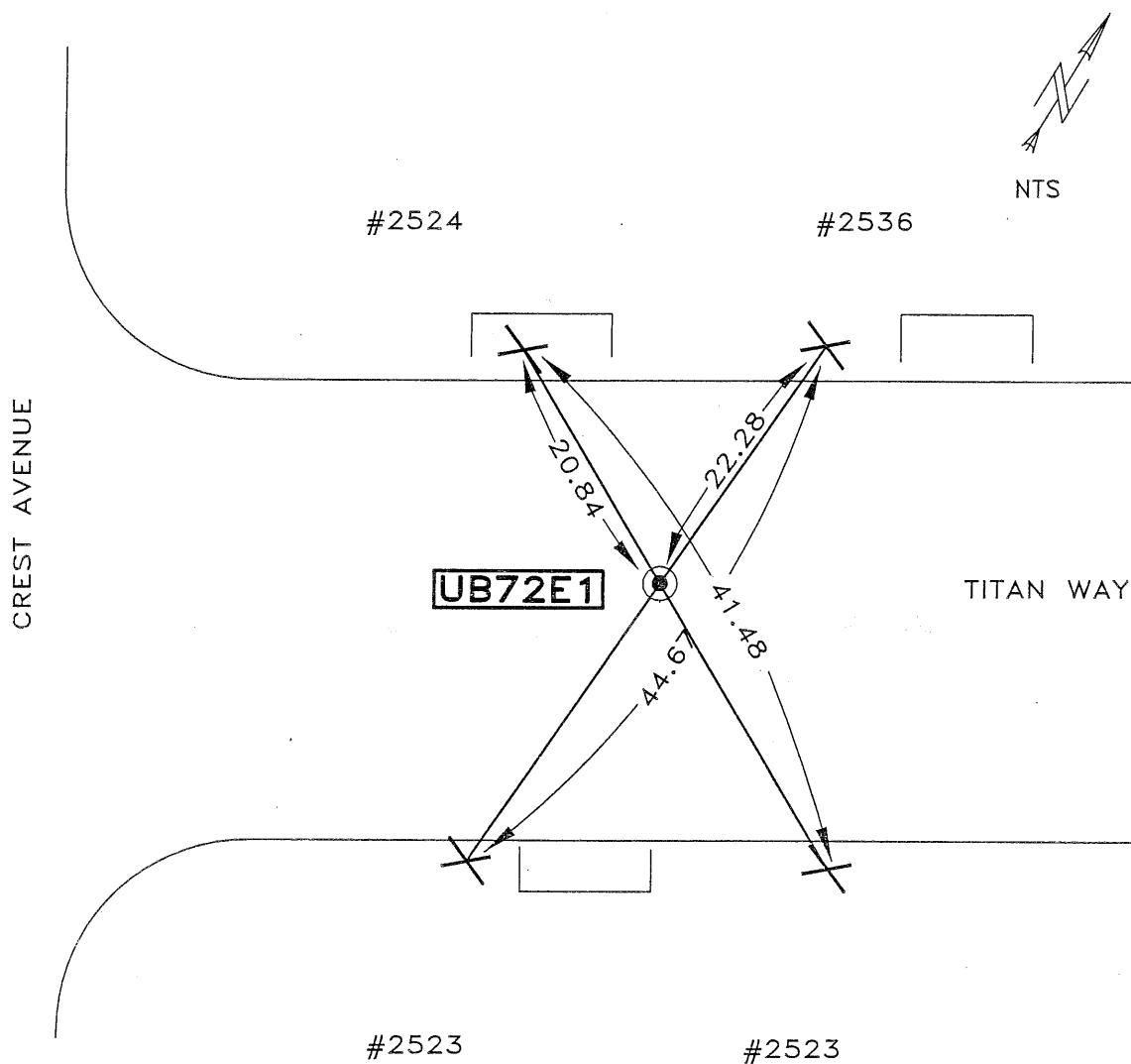
## COUNTY SURVEYOR'S STATEMENT

This Corner Record was received September 1, 2006 and examined  
and filed 10-13 2013.

Signed [Signature] Title County Surveyor



County Surveyor's Comment \_\_\_\_\_



### LEGEND

⊙ FOUND STANDARD ALAMEDA COUNTY MONUMENT WITH PIN  
IN CONCRETE POST IN MONUMENT WELL

✕ SET CHISSELED "X"

**AA##A#** ALAMEDA COUNTY MONUMENT ID

### REFERENCE(S)

PARCEL MAP 1251, BOOK 83 PAGE 4.