

جامعة الخرطوم
كلية الدراسات العليا
كلية التربية - قسم الجغرافيا

دور الإدارات الحكومية ومنظمات المجتمع المدني في حماية البيئة
(دراسة حالة محمية الدندر القومية - محلية الرهد)

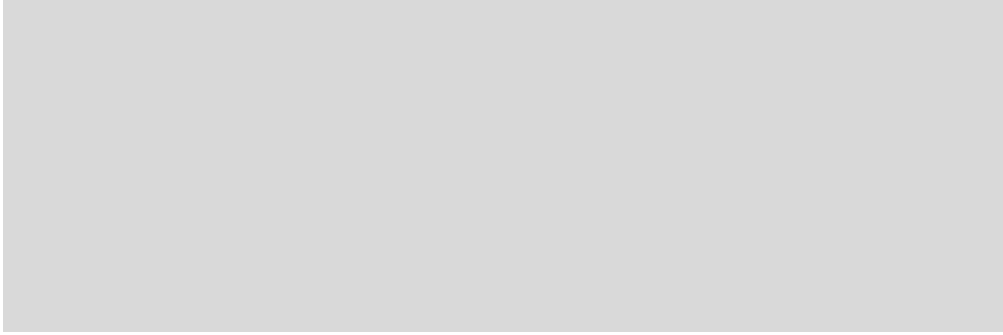
رسالة مقدمة لنيل درجة الماجستير في الجغرافيا

:
منى أحمد البشير علي

:
محمد احمد حاج علي الزبير

2006

الإهداء



.

∴

.

.

∴

.

.

Abstract

This research aims to study the biological diversity and to discover the role played by the government and non-government organizations in the environmental protection of Dinder National park. This role is of special significance as the area is expected to be of great socio-economic value depending on its recreational resource potentialities.

The hypotheses are suggested, and the study adopts the inductive together with the descriptive analytical methods. Field work data has been collected by such tools as direct observation, personal interviews and questioner.

The work is presented in Chapters covering a theoretical from work on the concepts, principles,. And theories related to environmental organization and administration. The physical and human features of Dinder area are reviewed. The research has arrived at the main conclusion that some mal-practices have led to changes and transformations resulting in the deterioration of the biological diversity: the people, the government, and non-government organization are not doing enough in this respect.

The study offers the following recommendations:

To adopt the model to conserve and develop, To increase peoples environmental perception which helps achieving conservation and sustained development, To lie a plan for better administration and utilization of the wet lands in Dinder and To develop the recreational potential resources in order to a chive the high socio-economic gains promised by the Dinder National park.

This research can lead us to the different development and put some aims in order to preserve the Kindness biological diversity the act.

	Abstract
	:
1	/1-1
2	/2-1
3	/3-1
3	/4-1
3	/5-1
4	/6-1
4	/7-1
4	/8-1
5	/9-1
8	/10-1
8	/11-1
	:
11	/1-2
12	/2-2
13	/3-2

16	/4-2
19	/5-2
21	/6-2
27	/7-2
31	/8-2
35	/9-2
37	/10-2
41	/11-2
45	/12-2
	:
51	/1-3
54	/2-3
57	/3-3
60	/4-3
63	/5-3
64	/6-3
66	/7-3
70	/8-3
72	/9-3
81	/10-3
	:
87	/1-4
89	/2-4
94	/3-4

97	/4-4
105	/5-4
110	/6-4
118	/7-4
120	/8-4
128	/9-4
	:
135	/1-5
135	/2-5
140	/3-5
140	/4-5
142	/5-5
144	/6-5
145	/7-5
146	/8-5
147	/9-5
147	/10-5
149	/11-5
	:
156	/1-6
158	/2-6
161	/3-6
163	

: /1-1

(1996)

(2001)

-: /2-1

(1998)

(1972)

.

(1993)

1992

. 2002

.

(1986)

%50

.

(1991)

15

33

658

.

.

(2001)

.

·
:
/3-1

·
-

-

[
·
]
-

·
-

·
-

·
-

·
:
/4-1

:

·
/1

·
/2

·
/3

·
/4

·
/5

·
-:
/5-1

·
/1

·
/2

/3

/4

: /6-1

-

-

-

-

-

-

-

-

-

-: /7-1

. 2006 - 1935 :

: -

.
:

/8-1

-: /1

(2000)

(1996)

·
:
/2
(1997)

·
(1990)
(1990)
·

-:
/1
/2
/3

·
/4
·
-:
/9-1
/1

: /

(1992)

·
(2002)

2003

2005

14

160

%43

)

%9.1

(1-1

(1-1)

%10	175	1.200		1
%15	264	1.760		2
%57	1.000	6.800		3
%10	173	1.150		4
%3	59	365		5
%5	90	593		6

(2005)

:

-:

/

(1998)

[]

(1997)

(1998)

(1995)

-: /2

-

: -

.

.

-

: /10-1

-: : -

.

:() -

:

.

: -

.

] : -

[

.

: -

.

.

: -

-: /11-1

(1998 – 1996)

.

(1999)

]

[

.

(1999)

()

.

(2000)

:

[]

:

.

.

(2001)

.

(2001)

(2002)

)

(

(2002)

:

.

-:

/1-2

(2001)

(1986)

(1982)

]

[. . . .

. . . .

(1984)

(1917 – 1858)

.
(1998)

.

-:

/2-2

(2001)

(1778 – 1712)

– 1632)

(1704

(1998)

-:

/1

/2

/3

/4

-:

/3-2

: (2002)

-: /1

(1770-1831) Haagel, (1737-1809) (paine)

.
:/2

.
-:/3
(Paine)

.
-:/4

— —

.

.

.

-:

/

(1998)

.

.

.

.

-:

/4-2

(1998)

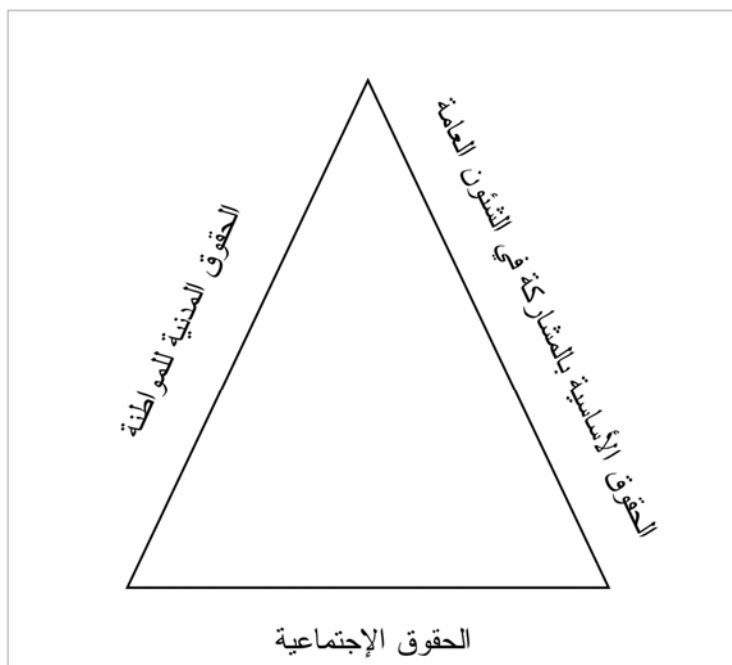
.(1-2)

:

(

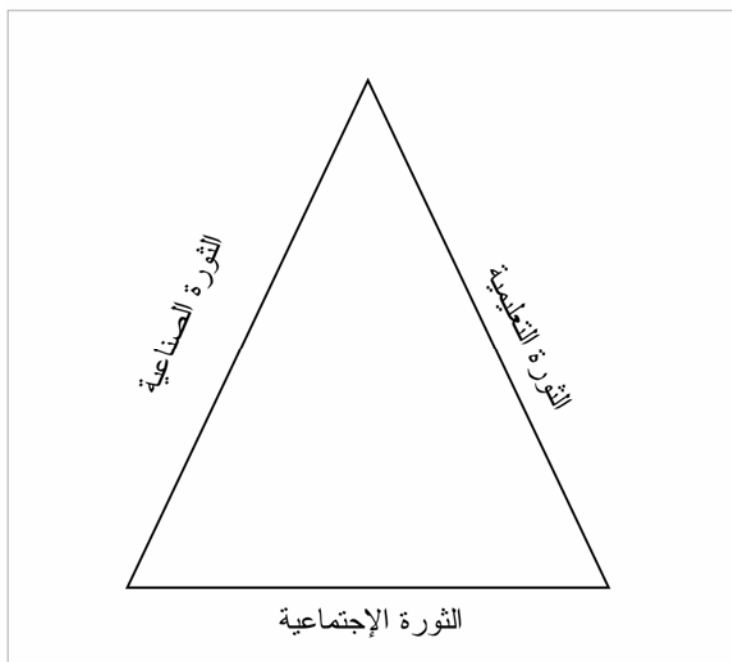
.(2-2)

شكل (٢ - ١) أركان المجتمع المدني



المصدر : بشارة ، ١٩٩٨م

شكل (٢ - ٢) الثورات الثلاثة



المصدر : بشارة ، ١٩٩٨م

(1992) jeanl , Cohen

.

(1998)

.

(1993)

.

" " " "

(1992)

(1993)

Nazih (1995)

.

:

Ibrahim (1995 – 1996)

.

-:

/5-2

-:

-:

/1

(1976)

.

(1991)

.

:

/2

(1995)

(1991)

-: /3

(1994)

-:

-

-

-: /4

(1981) Johnson (1978)

-: /5

Marx (1967)

.

-:

/6-2

-:

-1

(1993)

.

-:

-2

(1996)

.

]

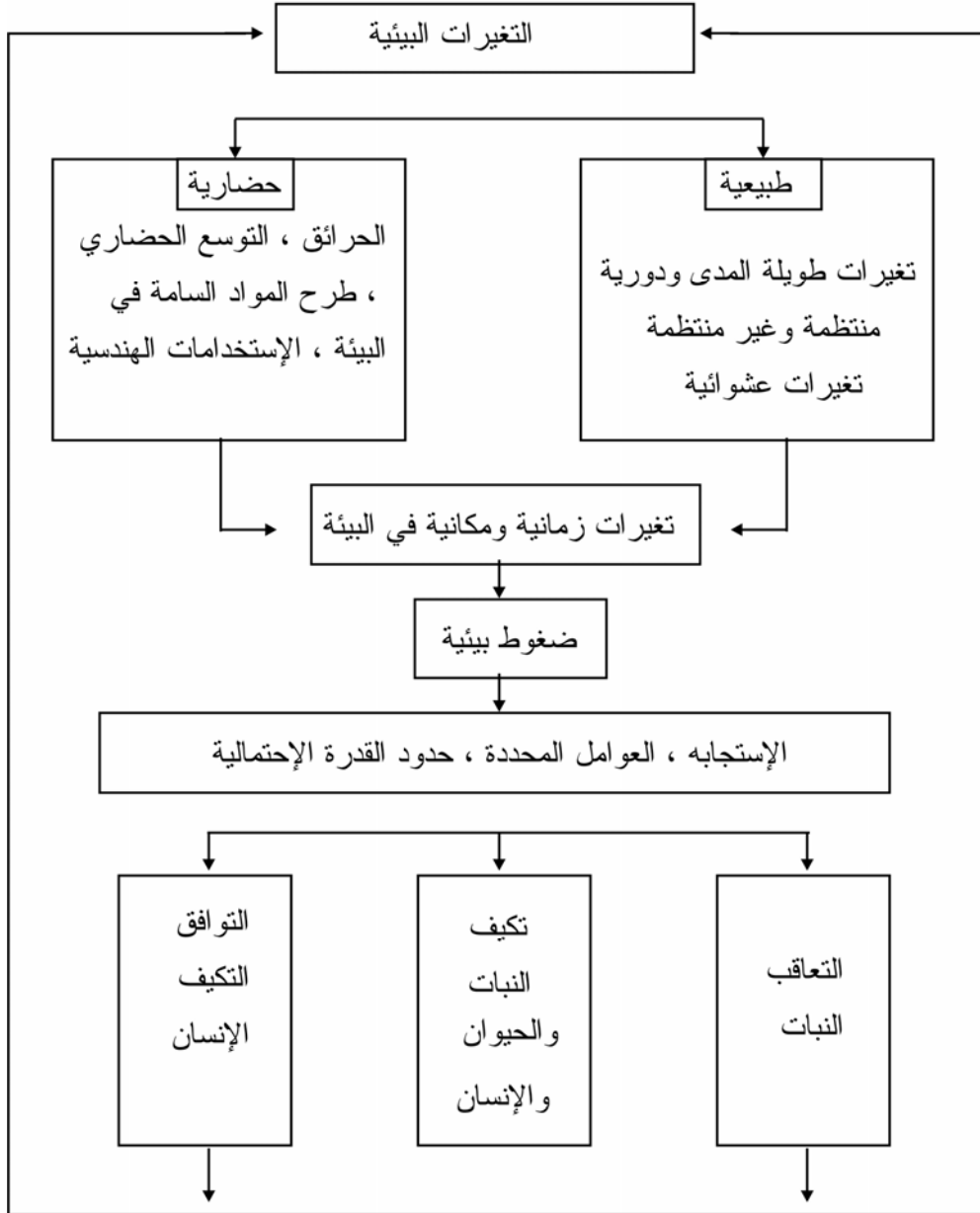
[

(3-2)

.

.

شكل (٢ - ٣) التغيرات البيئية وما يترتب عليها من ضغوط بيئية



المصدر :غراييه والفرحان ، ١٩٩٦م

-:

/3

.

(1990)

-:

:

-

22

1859

1953

.

:

-

24	600.000	4000
60.000		

Environmental Resistance - : /4

(1996)

-:

.[] /1

.[] /2

. /3

. /4

.[] /5

. /6

/7

-: /5

(Yeast calls)

(4-2)

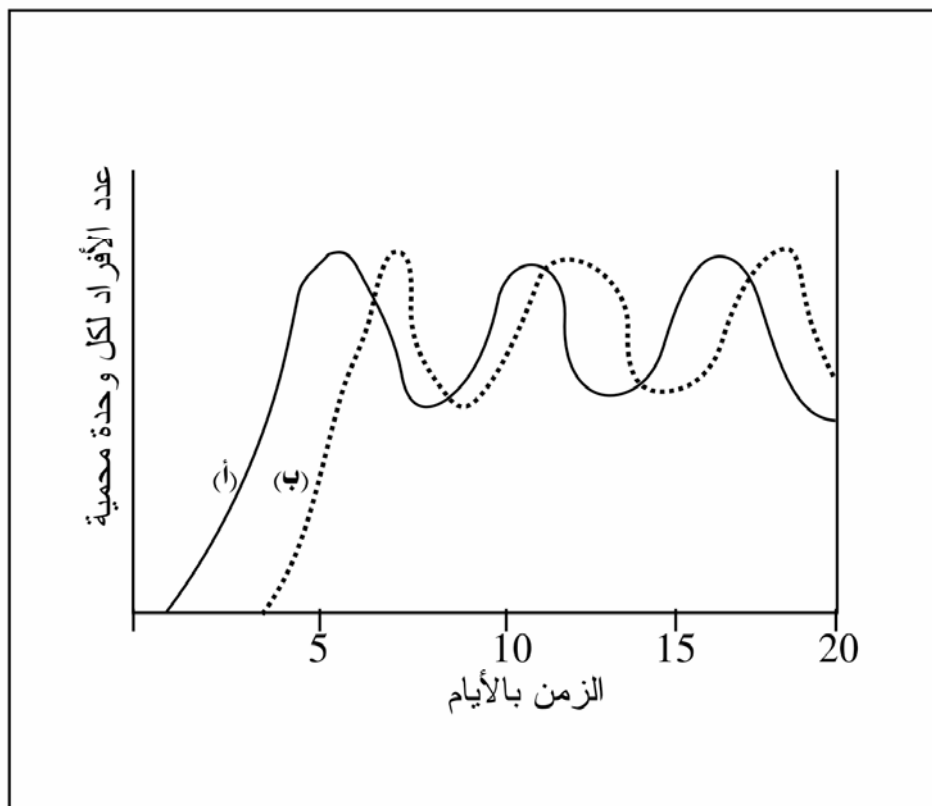
()

- .

.

.

شكل (٢ - ٤) أثر إضافة مجموعة البرامسيوم إلي مجموعة خلال الخميرة



المصدر : حياتي (١٩٩٦ م)

.

.

-:

/6

-:

-:

-

(1984)

[1904 – 1841]

-: -

(1989)

.

(1984)

.

.

-: -

()

.()

.

.

-:

/7-2

(1999)

1972

1965

-:

/1

()

.

(1998)

1972

.

(1989)

.

(1991)

.

(1998)

.

(1991)

1902

.

:

(1981)

.

.

-:

(1994)

:

:

-

:

-

:

-

.

-(2002)

/1

.

/2

. . . .

-:

/2

(1992)

(1983)

(2002)

(1997)

-:

: /1

: /2

:

. []

: /3

-:

(1991)

.

(1984)

:

(1998)

.

-:

.

-:

/8-2

(2002)

-:

(5-2)

/1

.

/2

.

-

-

/3

.

-:

/4

-

[

]

-

.

.

.()

-

-

.

-

.

-

.

/5

.

/6

(5-2)

.

/7

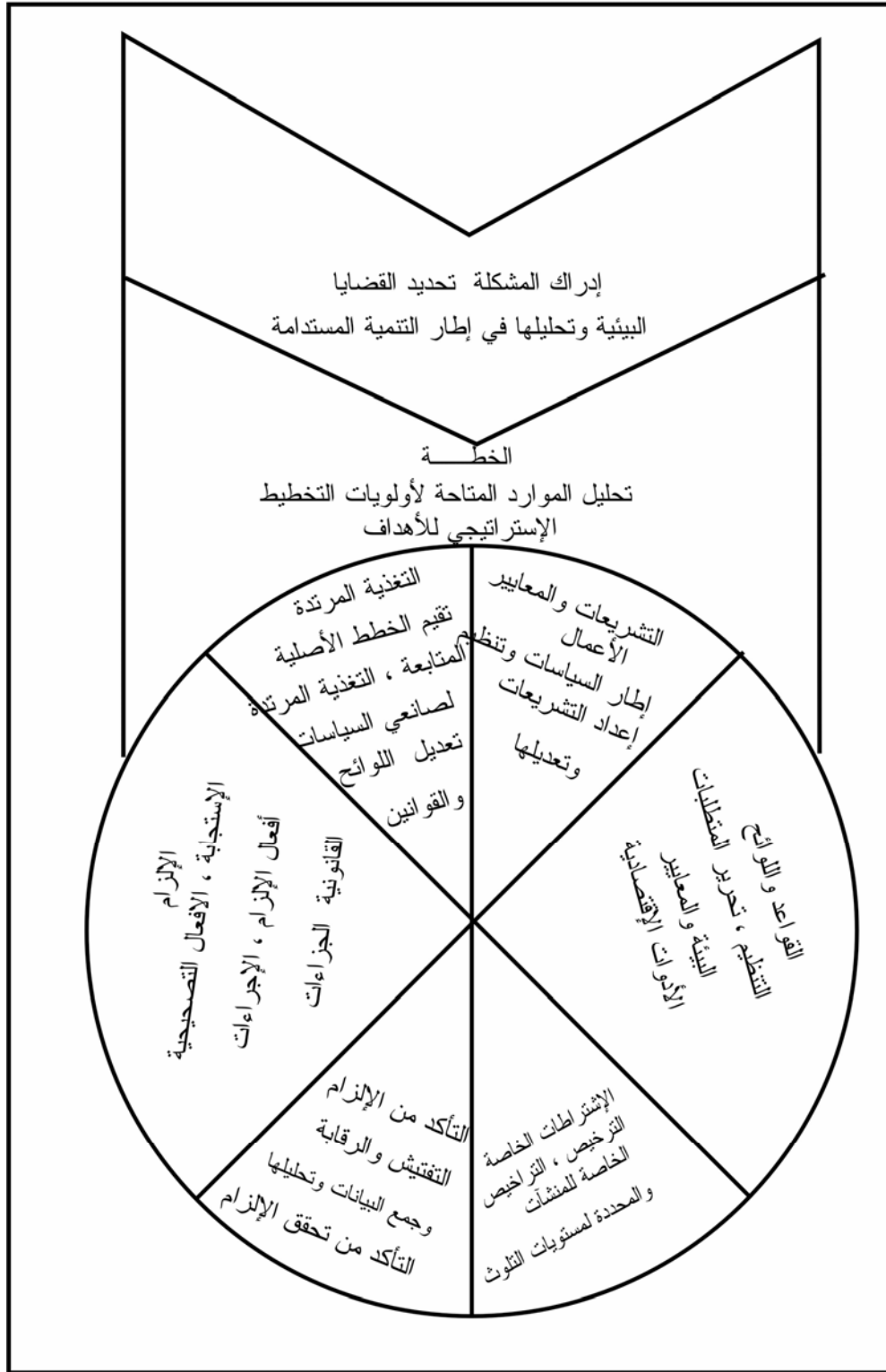
-:

(5-2)

-:

.

شكل (٤ - ٤) استخدامات الأراضي وتداخلها



المصدر : الخولي (٢٠٠٢ م)

(2002)

-:

-

.

-:

/1

(1996)

-

.

-:

/2

(2002)

.

(2002)

-:

/3

-:

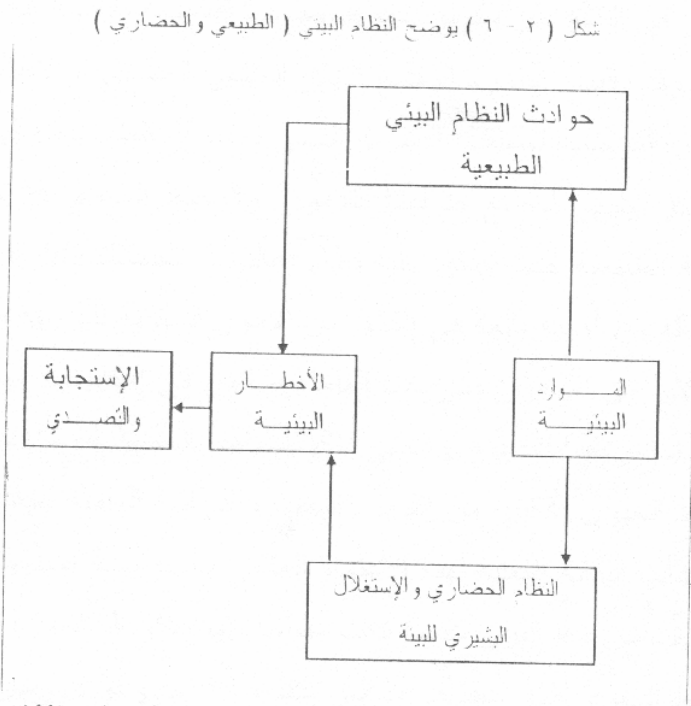
(2002)

/9-2

(1996)

-:

(2-6).



المصدر : غرايبة والفرحان ، ١٩٩٦م

-:

(1996)

[. . . .]

-:

/10-2

(1984)

System life

Sapport

1968

Man and Biosphere

.		
-:	/1	
:		
-:		
.	/1	
	/2	
.	/3	
.	/4	
.	/5	
-:	/2	
(2001)		
-:	/	
.	/	

1981

-:

-:

/1

.

/2

.

/3

.

-:

.

.

-

-

-

-

.

-

.

-

.

-

.[]

.
.
%10
(1995)

.
-: /3
(1999)

-:
/1

.
.
/2

/3

.

/4

.

(1995)

(1969)

:

—

—

—

—

—

—

—

.

-:

/11-2

(1995)

.

-:

.

.

/1

.

/2

-:

/1

/2

/3

.

.

-:

-:

.

(1999)

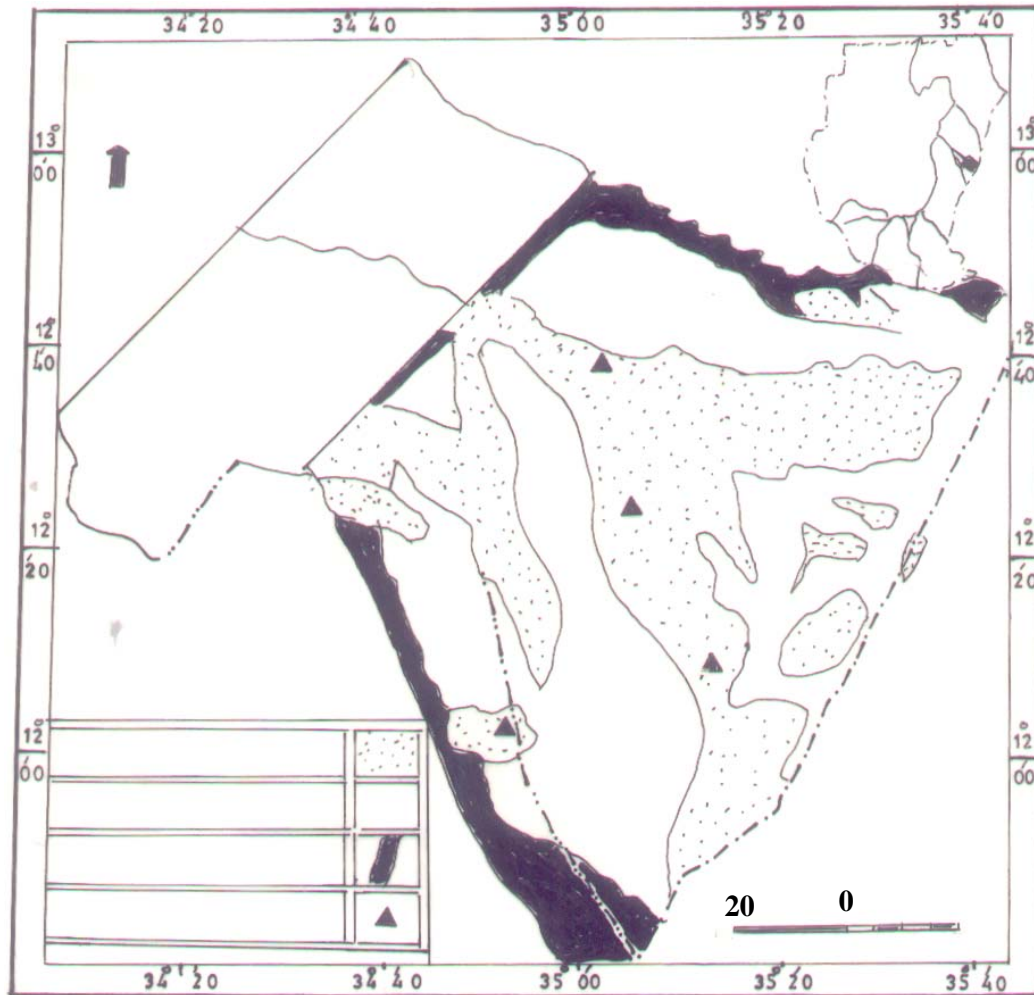
-:

(1-2)

-:

/

(1 - 2)



2004 :

.

.

-:

/

]

[

.

.

-:

/

.()

.

.

-:

:

/1

.

-: /2

.

-: /3

.

-:

-

.

-

.

-

.

-

.

-:

/12-2

-:

(2001)

73

1918

1900

1918

1902

.

.

(2001)

-:

:

/

(2001)

(1938)

.

.

-:

/

(2001)

.

:

:

/

-:

(1996)

.

(2000)

-:

/1

.

/2

.

:

/3

.

:

/4

.

.(1-2)

(1-2)

-	
.	

(2000)

:

(2002)

-:

-

.

.

-

-

.

-

.

-:

(1998)

.

(1981)

.

(1998)

.

Ibrahim (2001)

]

(1998)

(2001)

-:

: -

: -

(1993)

/1-3

-:

(2004)

:

35:02 12:36

34:48 12:32

12:32

34:32

34:44 11:55

.(1-3)

(1975)

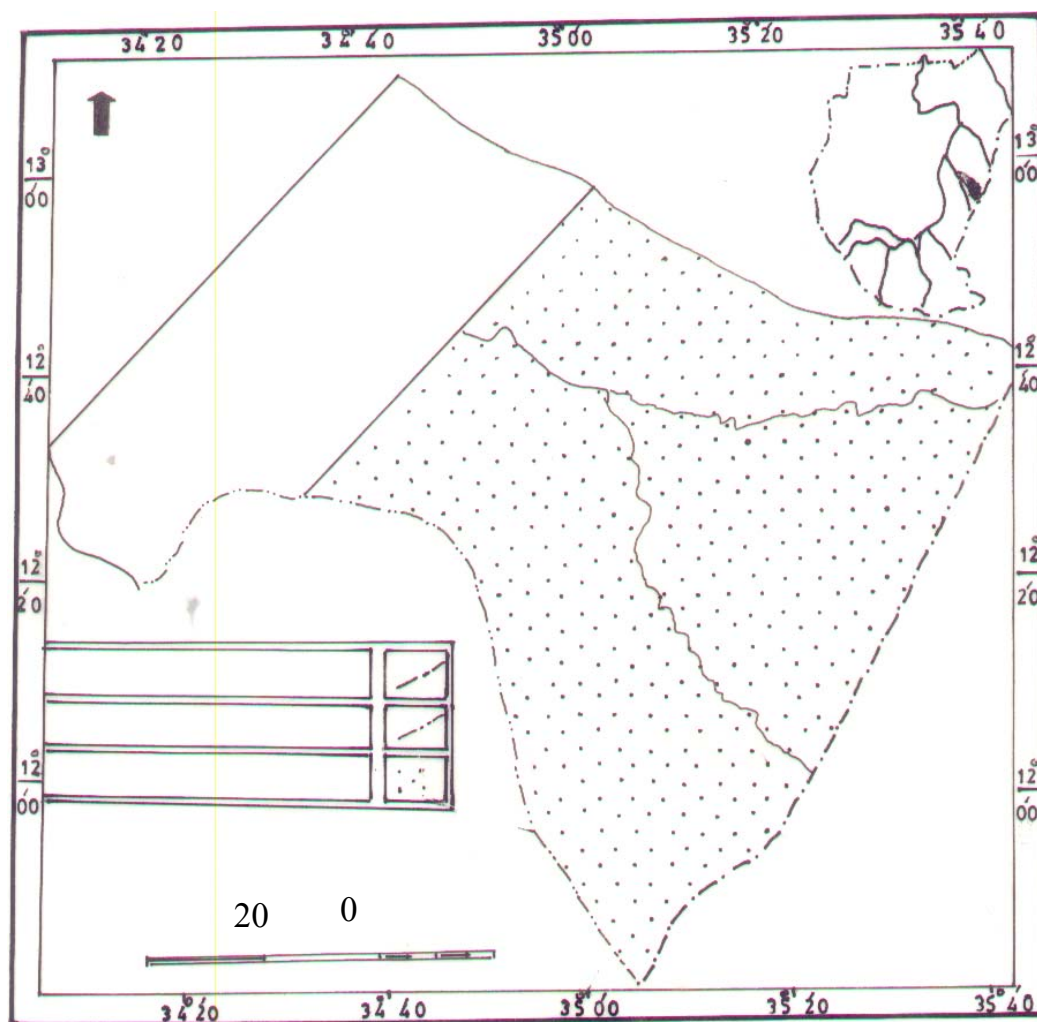
1801

.

(1889-1885)

.[1888 – 1306]

.



2005

:

1935 (2002)
1933
1978 247

(Core Zone)
(Transition Zone) [Buffer Zon]
(2002)

.

1984

.² 10.280.199
Suleiman (1986)

.

.

-: /2-3

Elmoghraby-etal (1985)

-:

: /

.(2-3) .

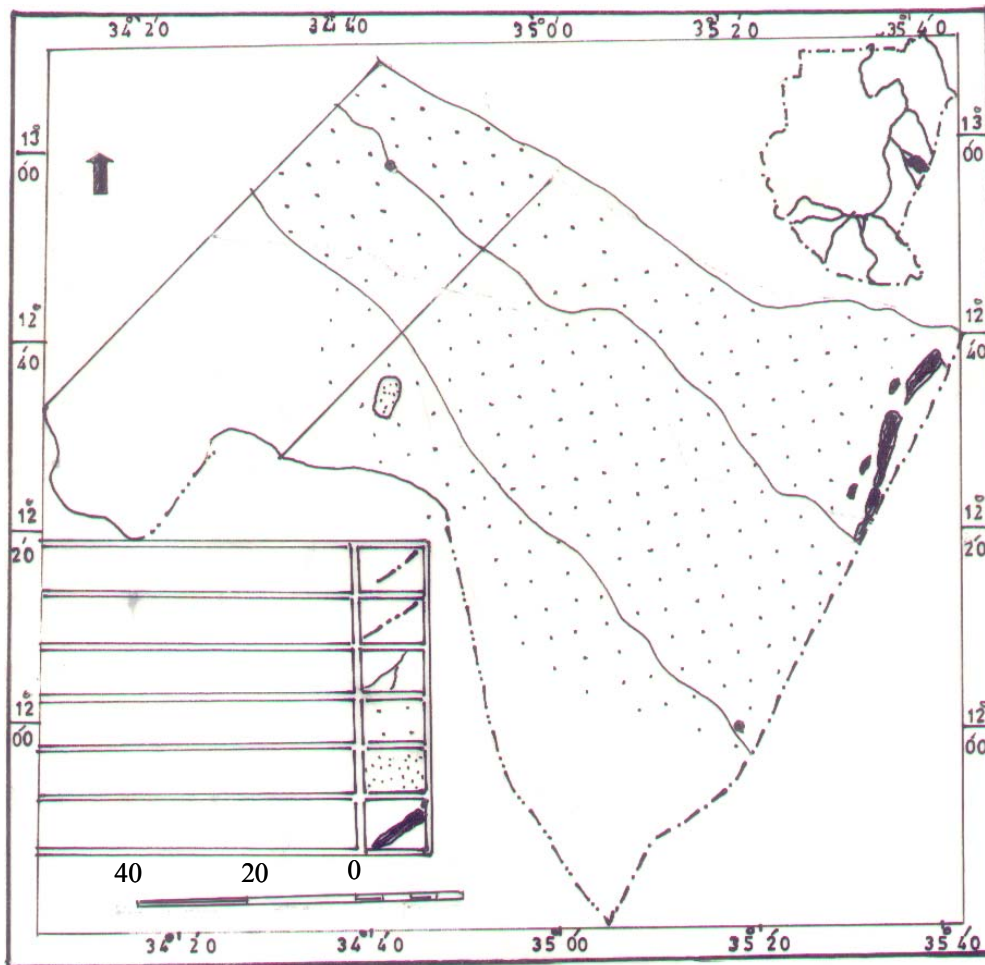
: -

.
:-

.

.

(2 - 3)



Williams & Adamson :

: -

.

(2002)

.[]

Elmoghraby-etal(1985)

. 12

(2002)

(Terraces)

.

-: /3-3

Elmoghraby-etal (1985)

500-400

500

1250:1

(2002)

Clay]

[Alluvium]

[Depreions]

[plain

.(3-3) .

Abdel Hameed. etal (1996)

4.5

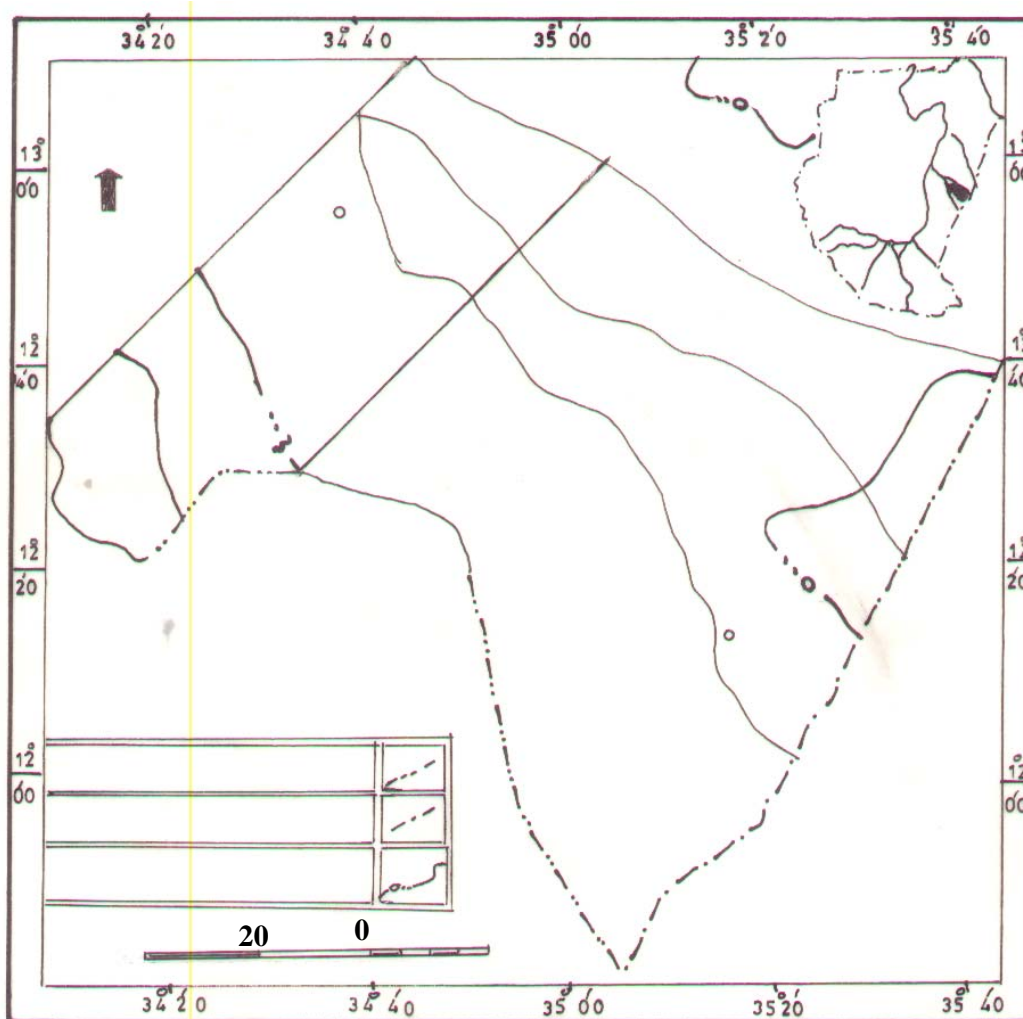
200

(1982) [AbdElHameed Etal] (1983)

[Hashim] (1987) [Eltom]

-:

(3 - 3)



2004

Suliman (1986)

.

-:

: /

Abdel Hameed etal (1996)

40

12

4.5

1970

22

1.6

.

.

.

.2

.

: /

2.3

.

:

/

1.8)

12

(

(2002)

2002

.(4-3)

:

/

13

Abdel Hameed Etal (1996)

5

2

2.5

(

3.6)

(2002)

.

1984

2002

- :

/4-3

-:

(

) -:

.

.

]

.[

[

]

8

. 50

-:

.

%15

%30

3

1970

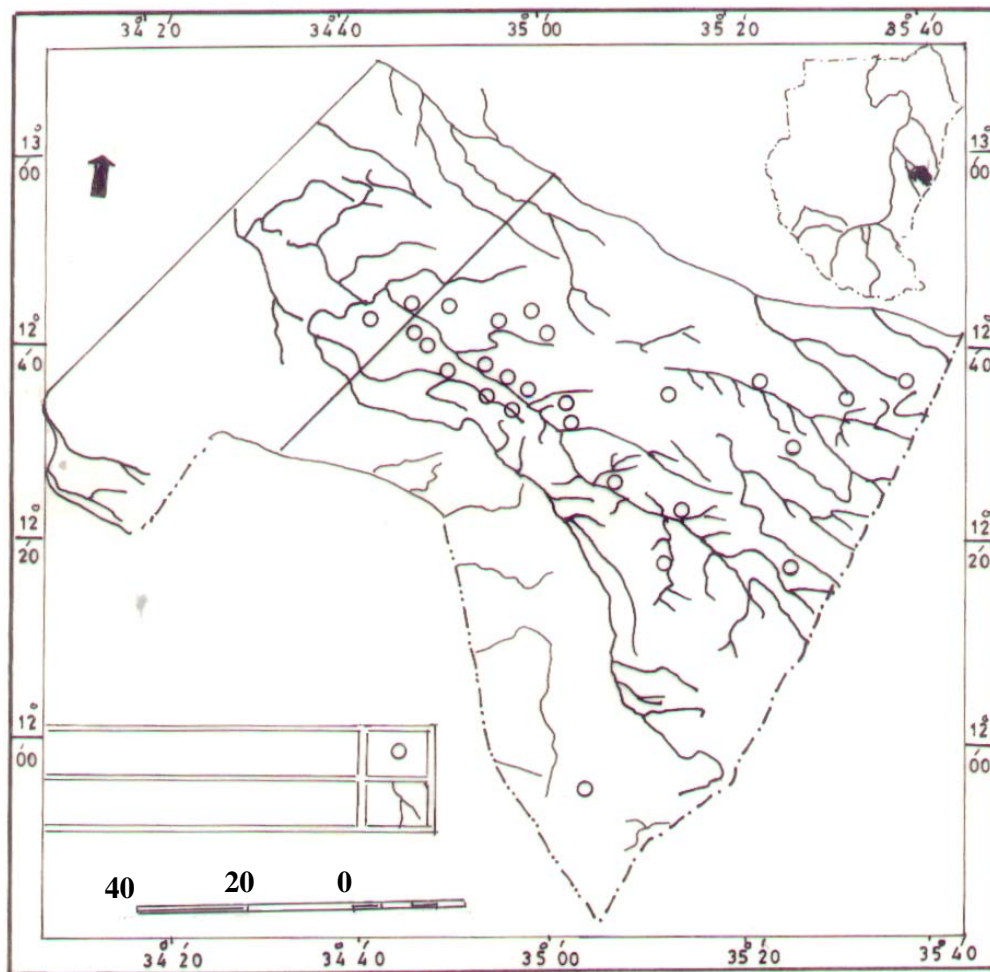
2

.(4-3)

1985

.6

(4 - 3)



Abedel Hameed etal (1996) :

-: /5-3

(2004)

:

-)

(-)

Butting & Lea (1962) (

.

.

20

30

(800-600)

(1000-800)

2001

.

.

30

.

20

38

%65-60

40

.(1-3)

(1-3)

	967
	450
	850-550
	— —
	45
	12

(2002) :

-: /6-3

Holsworth (1968) (2004)

Dasman (1972)

Entosols Vertisol

Entisol

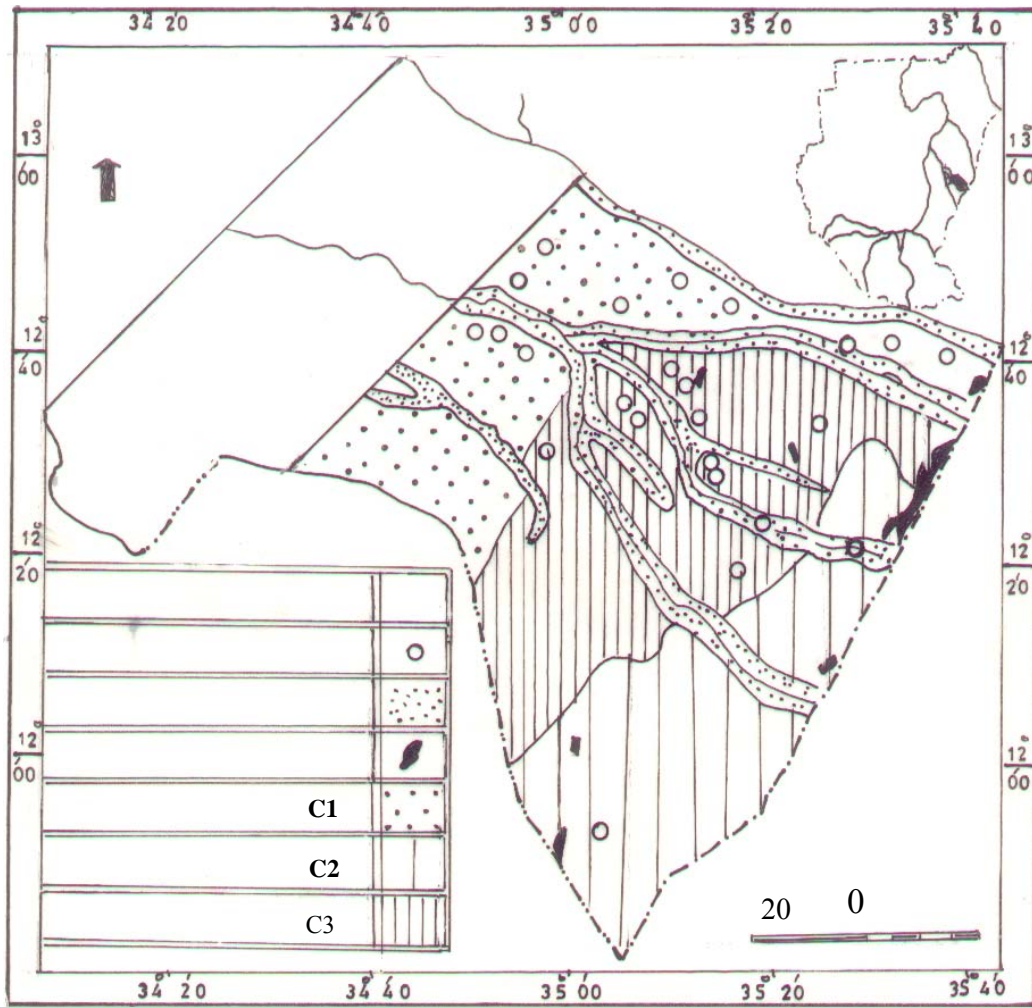
.

.(5-3) Vertisols

(1975)

.

(5 - 3)



$$[\quad]$$

]

(1975)

-: **17-3**

Harrison a Jackson and 1958

— 2 —

1

Hakim et al (1978) and Abdel Hameed et al 1996

:

.

-

.

-

.

-

(2002)

()

)

(*Hyphaenethebajca*)

(*Seedlings*)

(*Ficussy*)

(*Zspina chirsti or abyssinca*)

(*comorus*)

(*A. nilotica*)

(*Tamarindus indica*)

(*pilostigma*) (*reticulatum*)

(*A. siberiana*)

(*Gardenia luta*)

(*Mimosapigre*)

(*Strata*)

(*Tamarix.sp*)

(*lowherbs*)

.

(*Outcrops*)

(32)

(*Dalbergia*) (*melanoxylon*)

(*Anogeisus leiocarpus*)

(*setigera sterculia*)

(*Adansonia digitata*)

.

()

(*sorghum sp*)

(*Eragrostistremula*)

(*Uniset a beckeropsis*)

(*Setaria pollida fusca*)

.(*Andropogon gayaganus*)

(*Setaria spp*)

.(6-3)

(*Wood land*)

(*balanities aegytiaca*)

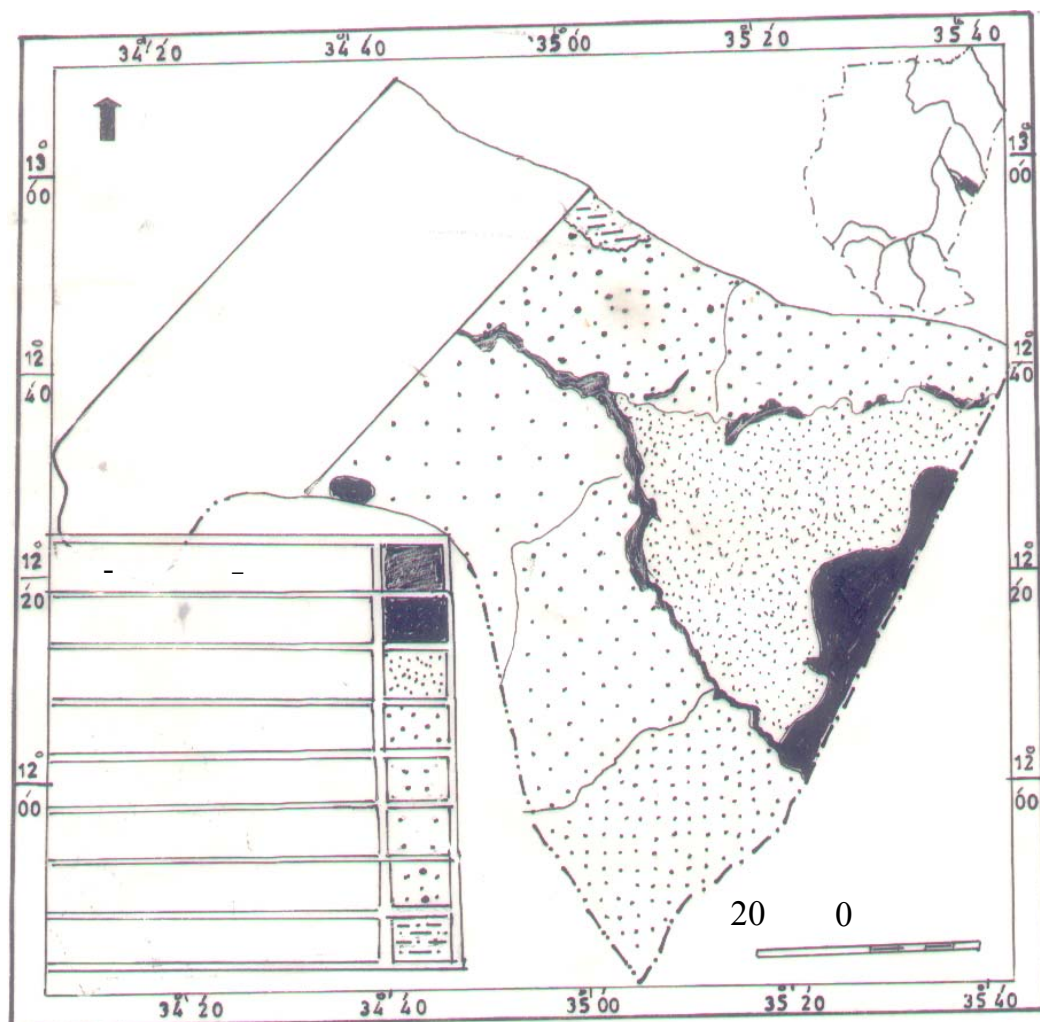
(*A.seyal*)

(*Entda*

sudanica)

.

(6 - 3)



2005

:

(zamosam perrise tom)

(*pHyprrhénias*)

(*Acanthaceae*) (*Compositae*)

spp)

(2002)

(*Ceratophy* *llomsp* ,

((*Bracharriasp*))

(*Cynodon dactylon*)

(*Nymphaea* sp)

vossia cuspidata)

(*Echinochloa* spp)

(*Chorchorusolitorious*)

(*Ipomeeaquatica*)

1999

$$-:$$

/8-3

Suleiman (1986)

(1997)

Moghraby, etal (1985)

-:

-1

1950

15

. 1985

28 -27

(1999)

-2

2630

1980

1983

38

10

:

-:

/9-3

-: /1

(1986)

1929

.

.

-: /

(1995)

.

()

Awad –etal (1992)

.

-: /

(1995)

1976

(2-3)

.

-:

: 1983 /1

/

.

1983 /2

.

(1975)

.

.

جدول (٢-٣) مساحات الأراضي الزراعية واستغلالها

القرية	أم ككر	عين الجمن	نور المدينة	حنو الشطيب	الحنو الأزرق	أم كراع	الجمام الغربي	حلة هاشم	الخيرات	ام سلع
المنحة	٩٣٧	٤٠٥	٢٤٠		٩٣٧	١١٦٢	٣٣٠	٦٣٧	٢٢٥	١٢٧
بالتفان										
عند الجروف	٥٠	٢٦	٥٨	٥٢	٩٤	٣٦٠	٦٣	٢٥	١٤	١٠

المصدر: فضل المولي (٩٩١ م).

·
(1991)

·
-: /2

(1995)

(1991)

·
—
·
%31 (2005)

%69

·

Awad etal (1992)

%13.8

%65.5

%55.2

6.9

: /3

-: /

(2004)

()

.

-: /

(2005)

%35

(1-3)

: (1-3)

: -

(2004)

()

.

(2005)

%91

-:

(3-3)

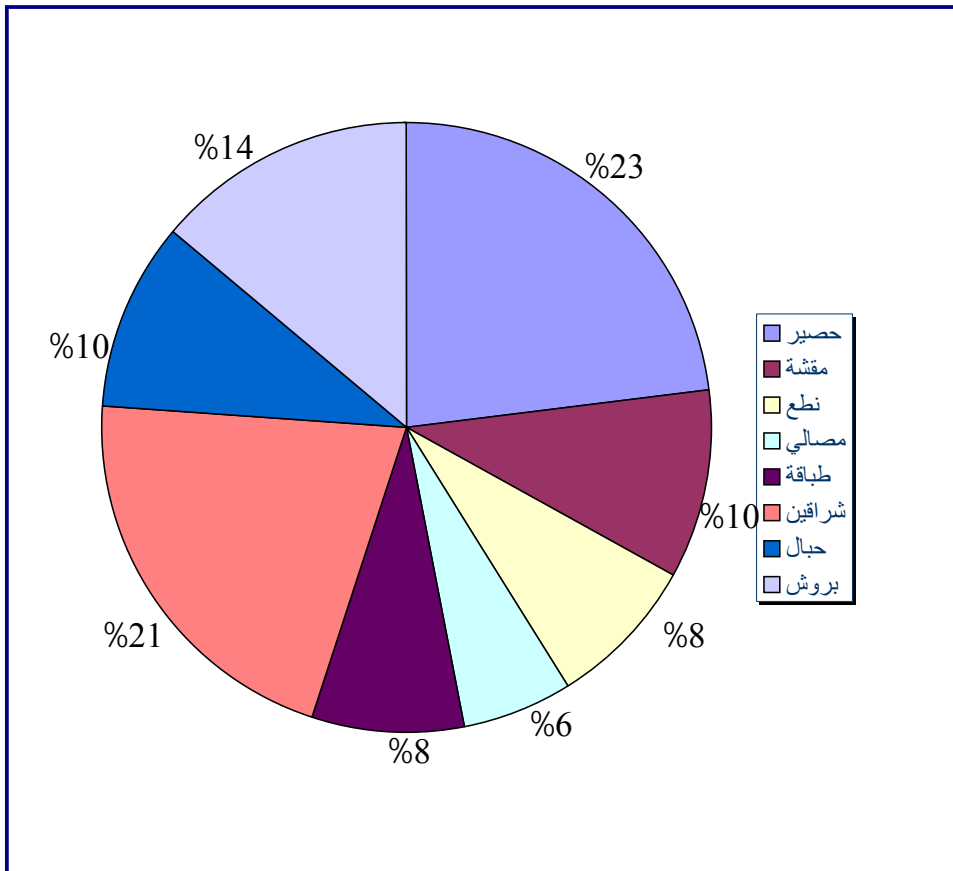
.

(1 - 3)



2005

(1 - 3)



2005

:

(3-3)

125		%30	
%29		%21	
%16		%16	
%11		%16	
%5		%2	
%9		%13	
%18			

(2005) :

(3-3)

.()

.

(%68)

-:

.

%54

-:

.

.

%91

%3

500

50

%6

.

-:

.

%86

.

%99

%1

.

%77

-:

.

:

.

.

-:

/10-3

-: /1

(2001)

"

%42 60

%31

500

700

. 70 6800

-: /2

.

.

%70

(4-3)

.

(5-3)

(4-3)

3.8	15.4	34.6	42.3	
		42.3	57.7	
15.4	57.7	19.2		
46.2	11.5			
7.7	3.8			
	3.8			
26.9	7.7	3.8		

.(2001) :

:

(5-3)

()	
()	

.(2004) :

-: /3

(2001)

(%61.3)

77

. 16

14

(%50) .

.

%97 %86.6
%95 %45

. ()

()

%10 %90

.

-: /4

(6-3)

(6-3)

%	%	
%11	%3	
%11	%21	
%28	%31	
%2	%1	
%29	%24	
%8	%8	/
%8	%6	/
%1	%4	
%1	%1	
%1	%1	

.(2005) :

(2005)

-:

200 / 24 () 13 () 20-

 30 15 200 40-

. 200 15 20 15-

 (2001)

()

) %6 %83 (7-3)

%7 %4 (

(7-3)

(7-3)

	:
%83	
%6	
%4	
%7	
	:
%76	
%24	

.(2001) :

:

:

/1-4

Abd El Hameed, etal (1990)

(1993)

%2.2

3.180.000

.(1-4)

(1-4)

 $\%_4$

11.775.290 :

1

2001

(1-4)

(1-4)

—			
	—	—	
	—	—	
	—	—	
3	12	10	

(2004) :

-: /2-4

(2002)

.

1972

.(1-4)

(1970) Bell

-:

:

.

:

.

:

.

(2004)

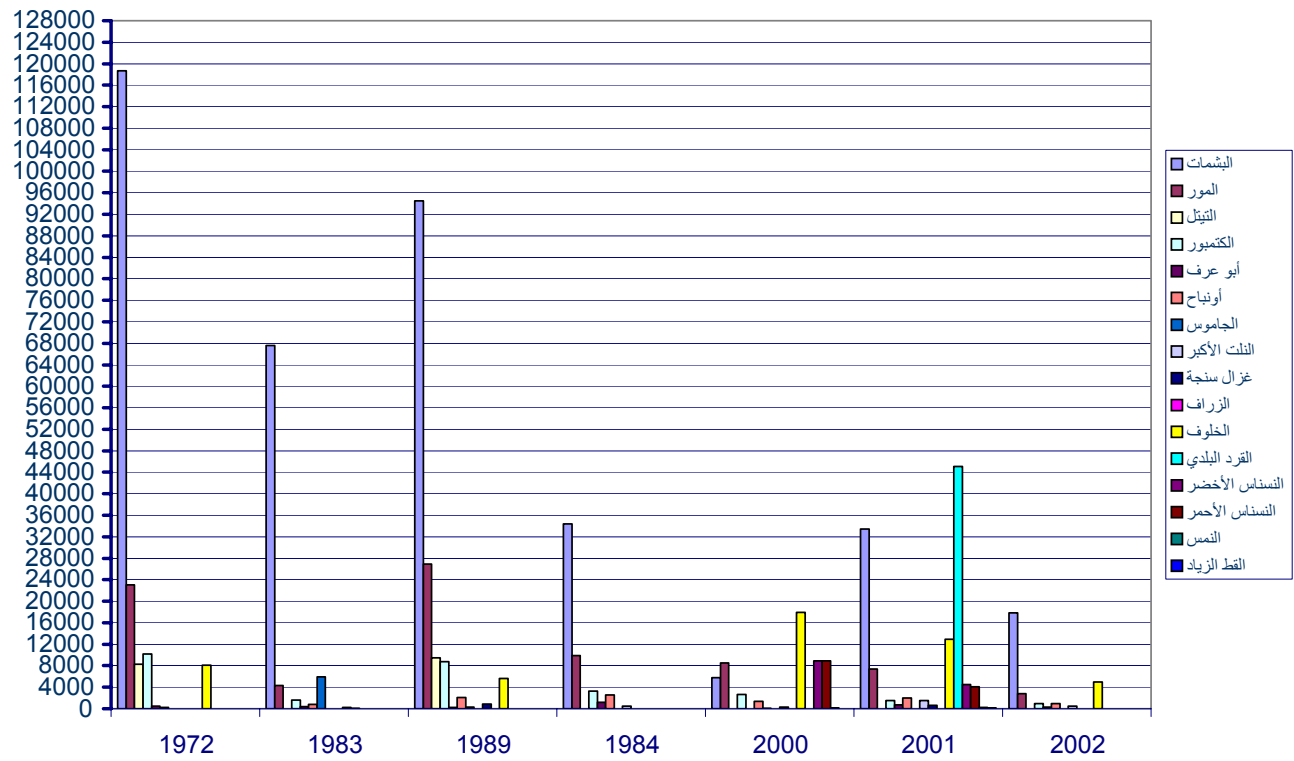
1935

()

.

(2002 - 72)

(1 - 4)



Dasman (1972):

.

1956

5613

1971

Dasmann, (1972)

Dasmann

1972

.

.(1-4)

2001 1972

%85

%68

%72

.

-: /1

(2001)

24

15

2001

24

91

37

.

-: /2

1984

(1999)

.

11

21

(2004)

()

.

-: /3

(1991)

.

.

.

(2004)

)

Tabanus (

.

(Leshmaniasis)

-: /4

.

(1991)

.

.

1982

.

:

-:

.

.

.

-:

/3-4
(1999)

(12.5) 1983

.

-:

/1

(2001)

1935

()

36

.(10)

14 1960

6

1960

1969

–

1972

17

1969

. 2001

6.800

1298

1994

(1999)

.

9

174

73

92

.

.

-:

/2

.

.

.

(2005)

%35

%40

.

%25

-:

/4-4

(1984)

.

(1976)

1970

(4)

.

-:

/1

(2005)

%99

.

(2001)

(2-4)

(2000)

195

()

24

5

.

.

：

(2-4)

%	
23.7	
42.3	15-1
13.9	30-16
5.7	45-31
7.7	60-46
1.0	70 -61
1.0	85-71
4.6	85

(2001) :

(2005)

]

()

.()

[

.

.

6000

.

(3-4)

(2001)

%25

1994

%46

100

50-21

2.88

%25

%65

%9

.

(3-4)

130	405	
250	937	
290	240	
260	862	
470	937	
315	330	
260	637	
70	225	
50	127	
3895	5862	

(1990) :

-: /2

.

(2-4)

%80

.

()

.

(2005)

].

.[

. 10

.

:-

/5

(3-4)

()

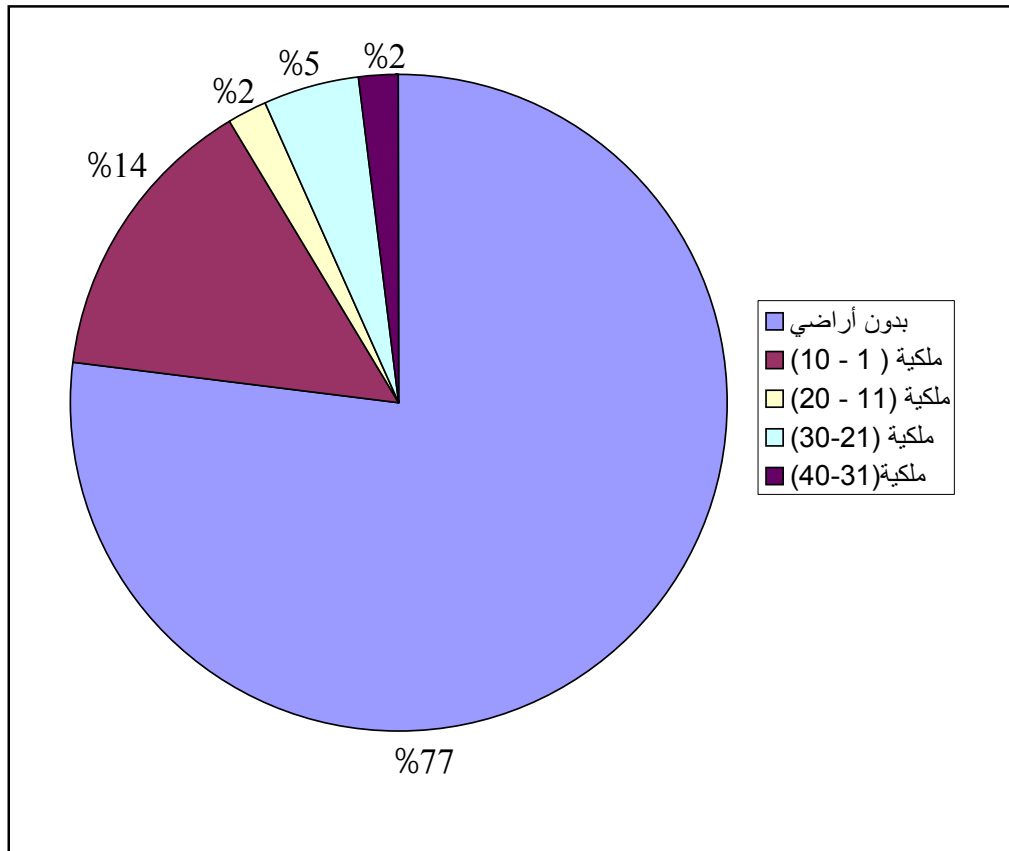
.

.

()

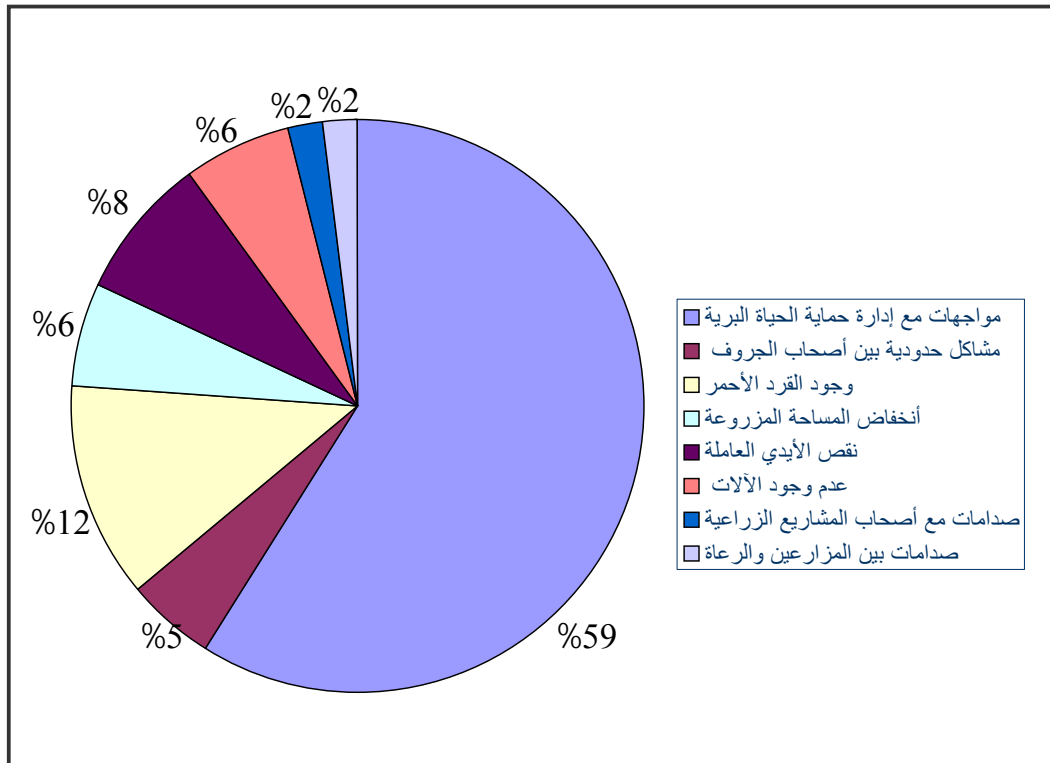
.

1995 2001
 %60 %91
 %40 %9
 1995- 2001
 (2 - 4)



2001 :

(3 - 4)



2005

:

%20

%80

-:

.

.

%37.5

%56.25

.

.

-:

.

.

.

-:

/5-4

(1999)

.

.

(2001)

.

(2005)

.

%66

-:

.

-:

.

:

.

%44

.

-:

:

.

-:

/1

.

/2

.

/3

.

/4

.

(2004)

()

-:

/1

/2

/3

/4

.()

/5

/6

-:

-

:

-:

-

-:

-

-:

/1

.

: /2

.

. 9

/3

.

/4

/5

.

%30

%10

.

-

.

-

.

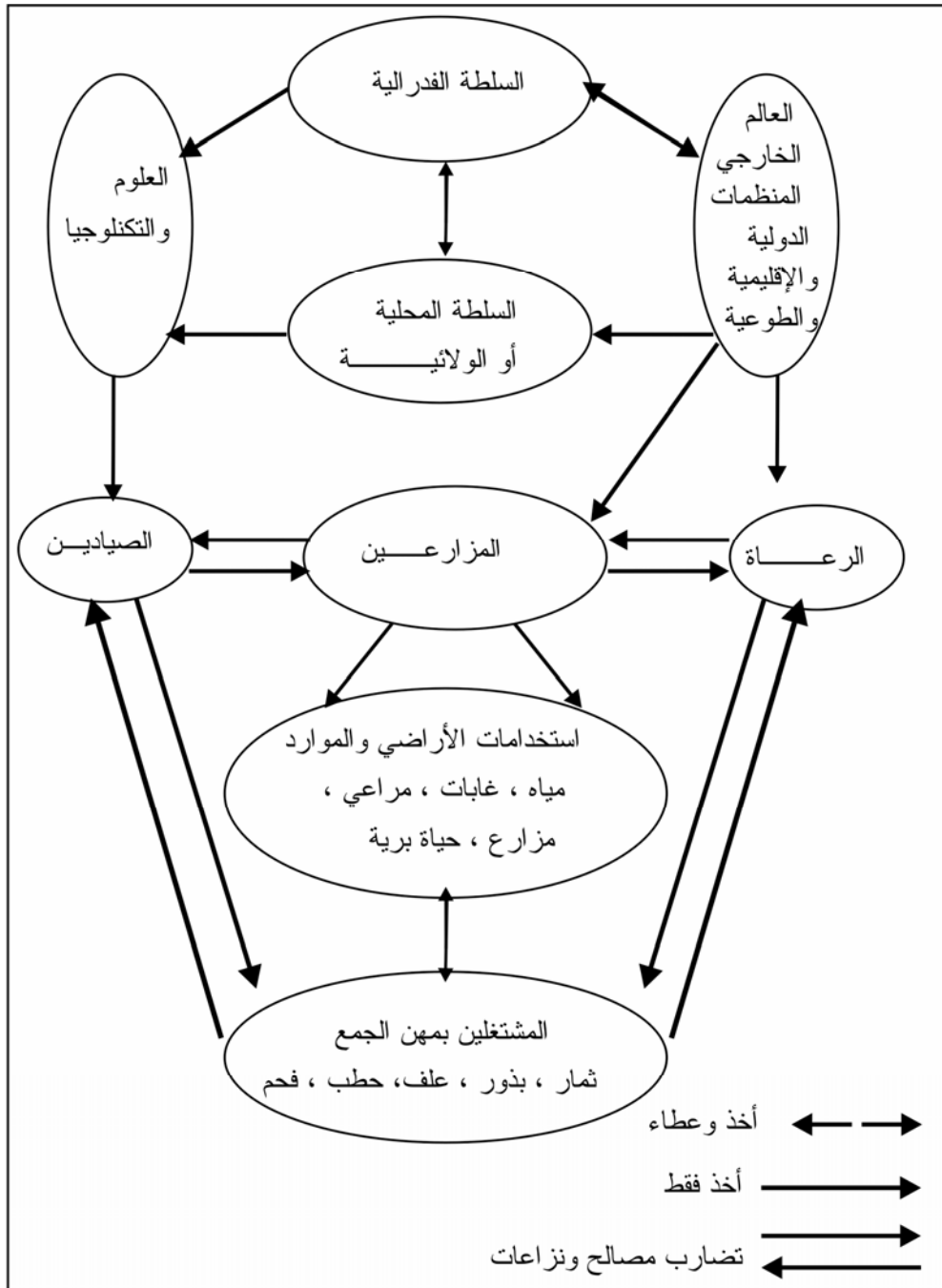
.

-

-

(4-4)

.



المصدر : محمد زين ٢٠٠٣م

-:

/6-4

-:

(2004)

.

.

. 1991

1995

.

-:

/1

.

-

.

-

.

-

.

-

-

.

.

-

-

.

.

-

.

-

-:

/2

/

:

.

/

:

.

-:

/

:

.

-:

(1996)

.

(2002)

.

-:

.

-:

1995

(1996)

-:

-

.

-

.

-

.

-:

:

/

(2003)

(Corezone)

.

.

.

.

(1999)

.

- :

.

-

-

.

(2004)

2000

2003

. 2006

-: /

: (2003)

.

-: /

-

.

—

—

-

.

-

-

-

28

250

(8)

48

32

42

%28

200

.

.

-: /

(2003)

-:

: -

. . . .

: -

(1-2)

.

: : : -

()

-: /

. -

-

.

-

.

.

-

.

-

-

.

-: /

100.000

-
150.000

.
-: /

-:

. /1
/2

. /3

. /4

.
-: /

.

-: /

(2003)

.

-: /

:

. ()

-: /

(2002)

2001

.

5

.

(2003)

[]

.

800

" "

.

.

. . . .

. (180) 500

. ² 10.299

(2001)

.

6

(Cable).

(2002)

(Pectin) .

16

.

-:

/7-4

-:

/1

1975

(2003)

100

7.000

.

- :

-:

2001

/1

.

.

/2

.

/3

/4

.

/5

.

/6

.

/7

.

/8

.

/9

.

/10

.

/11

.

/12

.

/13

.

/14

.

/15

.

(2001)

%88

.

-:

/8-4

(2003)

.

.

(2001)

-:

: /1

.

.

: /2

.

. : /3

:

/

-:

/1

(2005)

-

-

.

2001

2001

2001

.

: /2

:

]

—

—

—

—

—

— [

—

—

.

-: /3

.

.

" "

.

-

-

-

-

-

-

.

-

)

.

.

-:

/4

:

.

-

-

-

-

.

-:

-

/1

.

/2

.

/3

.

/4

.

/5

.

-:

/5

/1

.

/2

.

/3

.

/4

()

/5

.

/6

.

-:

/6

-1

]

.[

-2-

-

.()

-3

.

-4

.

-5

.(2005).

-:

/7

-:

(2005)

/1

.

/2

.

/3

.

/4

.

.

/5

.

/6

/7

.

.

/8

" "

/9

.

-:

:

(1)

/1

.

/2

.

/3

.

/4

2005

.

-:

:

-:

-

.

-

.

()

-

.

-

.

-:

/1

.

/2

.

/3

.

/4

.

(2005)

()

9000

1957

:

-:

.

1000

300

2001

.

.

-:

/9-4

-:

/1

(2005)

26

(2001)

2003

12

.

-:

/2

2001

:

]

2002

.

-:

:

19

28

(2002)

2001

.

2002

]

.

.

-:

:

2001

[

]

)

[

.[

]

.

: /3

:

-:

:

—

.

-:

:

(2002)

-

.

.

-:

/4

(2005)

()

[]

(45)

.

:

/5

(2005)

. 2005

:

/6

(2)

]

9

(1)

(1)

(1)

(2)

(2)

. [

]

()

()

3

)

()

. (

.

.()

-: /7

2002

.(1-4) . 2003

-: /8

.[]

-: /9

(2002)

9

(2005)

$$[$$

— 3 —

•

—

1

—

1

—

• [

—

•

1

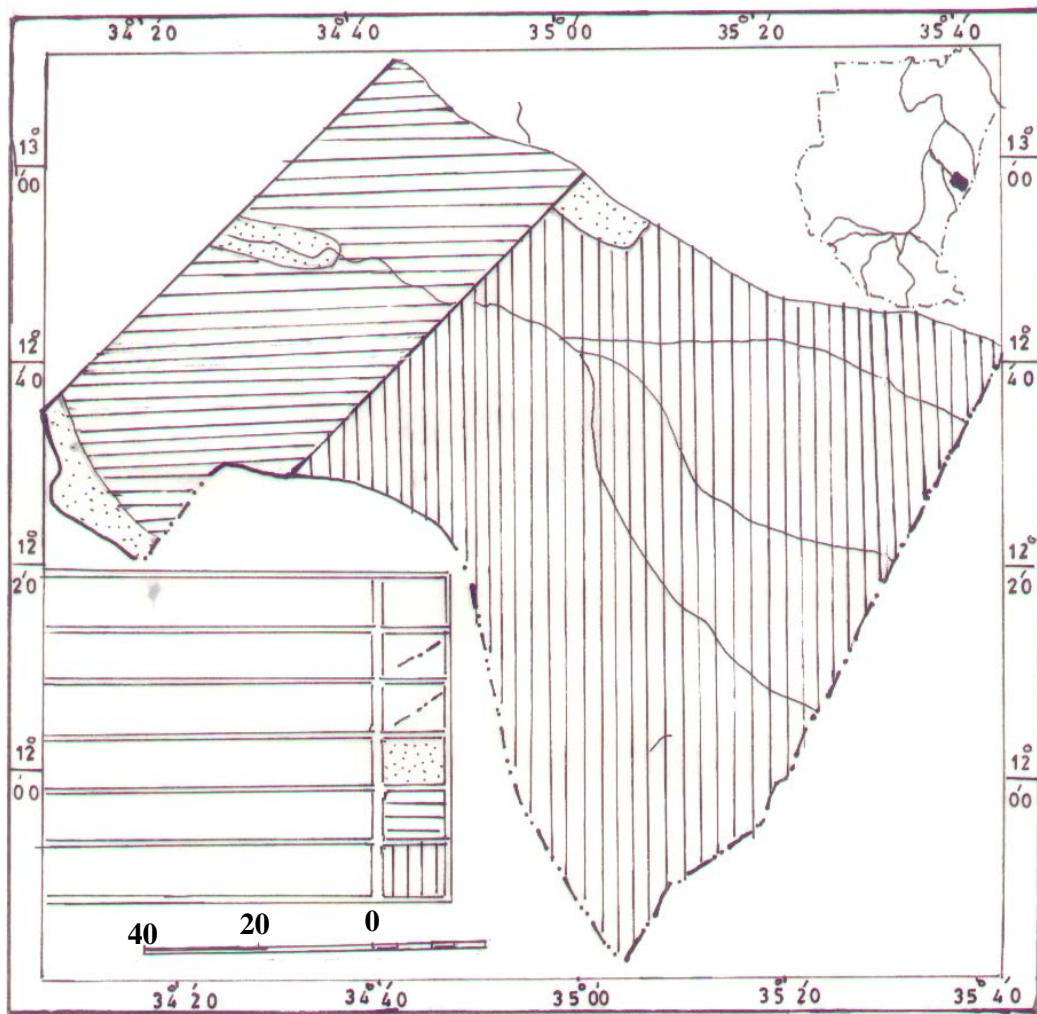
•

$$-:$$

•

. %10

(1 - 4)



:

1999

-:

[]

-1

-2

.

.

/3

/4

.

/5

.

.[]

/6

.

/7

/8

.

()

/9

.

.

/10

.

/11

:

-:

/1-5

: (2005)

Watershed

/

. problem

/

.

(1-5)

.

(1995)

.

-:

/2-5

(2005)

-:

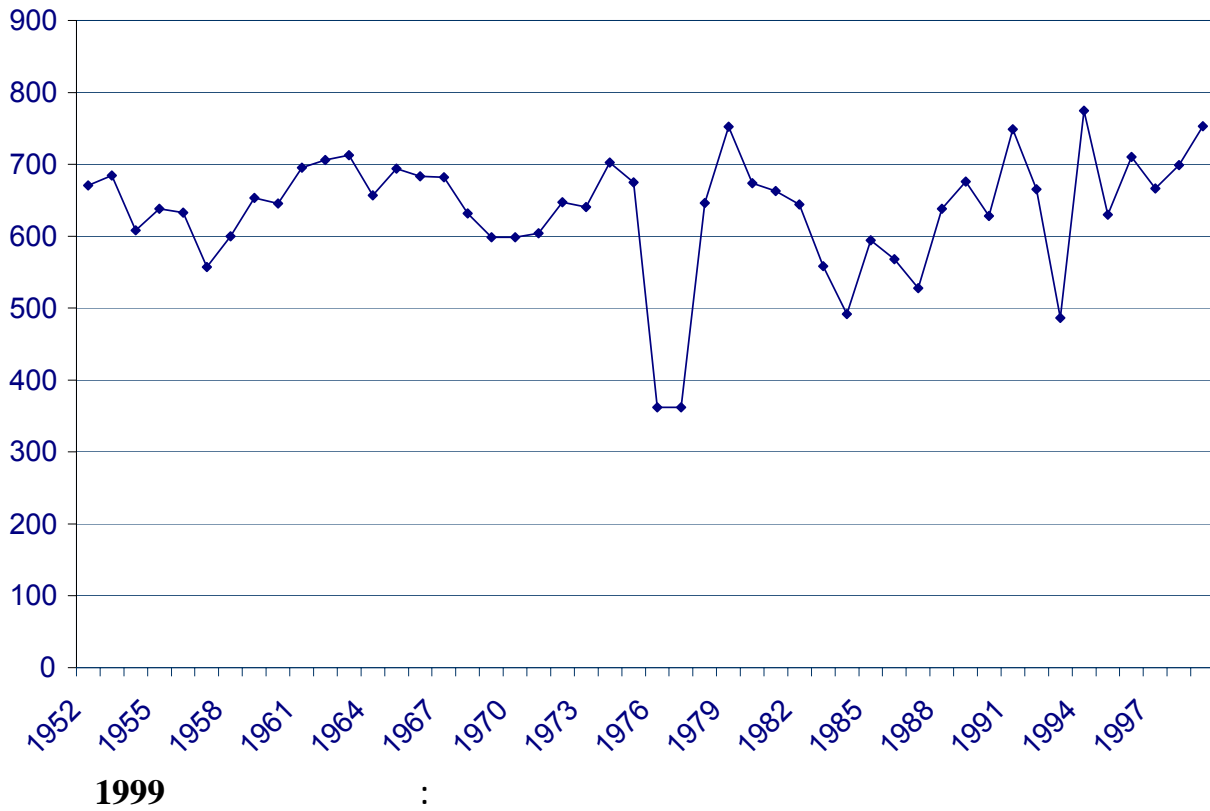
:

/1

.

1999 - 1952)

(1 - 5)



-: /2

(1999)

.

.

4

.(2-5) (1-5)

: /3

(2005)

.(4-5) (3-5)

(1 - 5)



2005 :

(2 - 5)



2005 :

(3 - 5)



2005 :

(4 - 5)



2005 :

-:

/4

.

.

:

/3-5

(2005)

.

.

-:

/4-5

-:

/1

-:

:

/

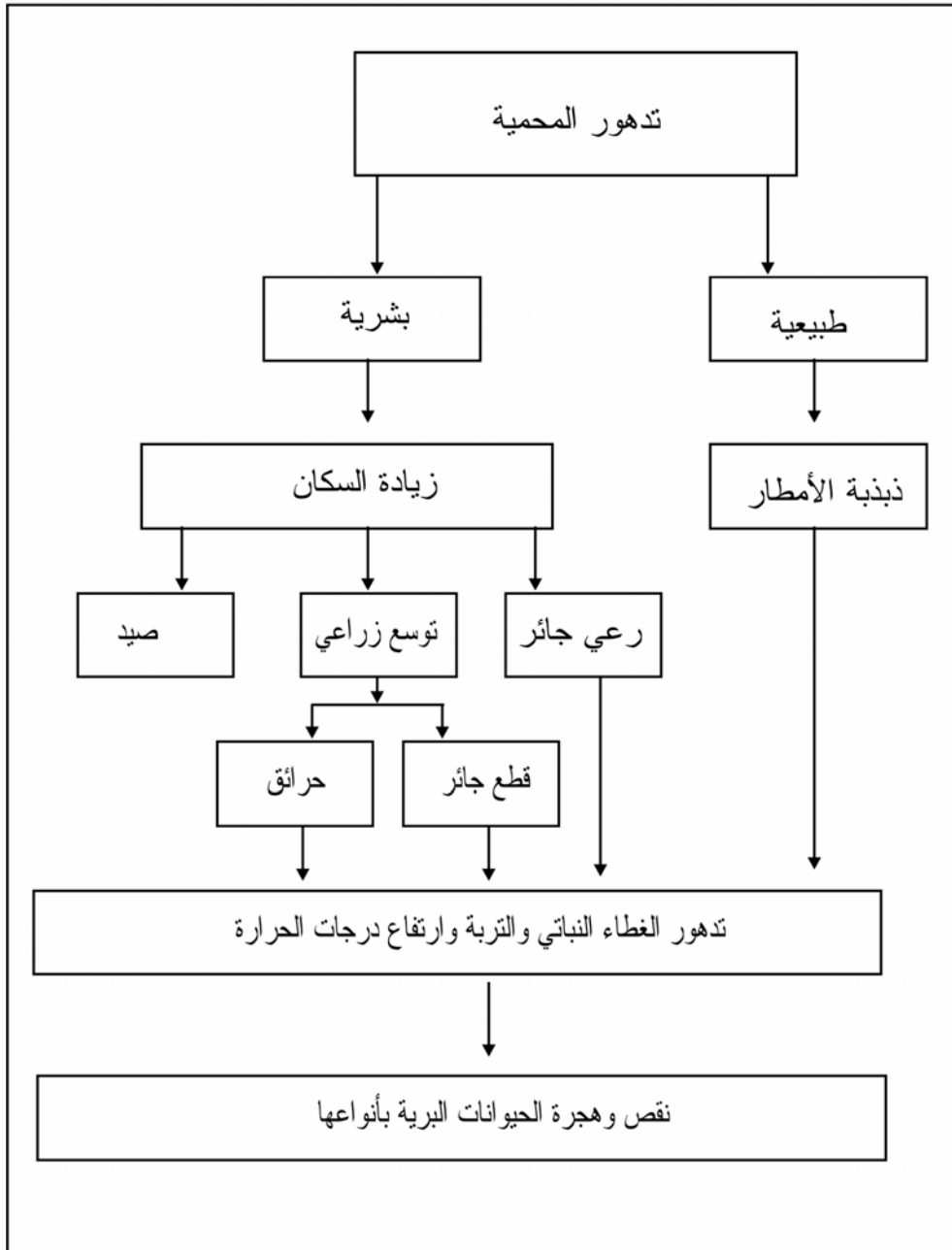
.

:

/

.(1-5)

نموذج (٥ - ١) أسباب وآثار تدهور محمية الدندر



المصدر : العمل الميداني ، ٢٠٠٥م

-: /5-5

(Dasmann 1972)

.

()

.(2-5)

]

.[

.

-:

(2002)

3 / : /1

.

.() /2

. /3

/4

.

(Dasmann 1972)

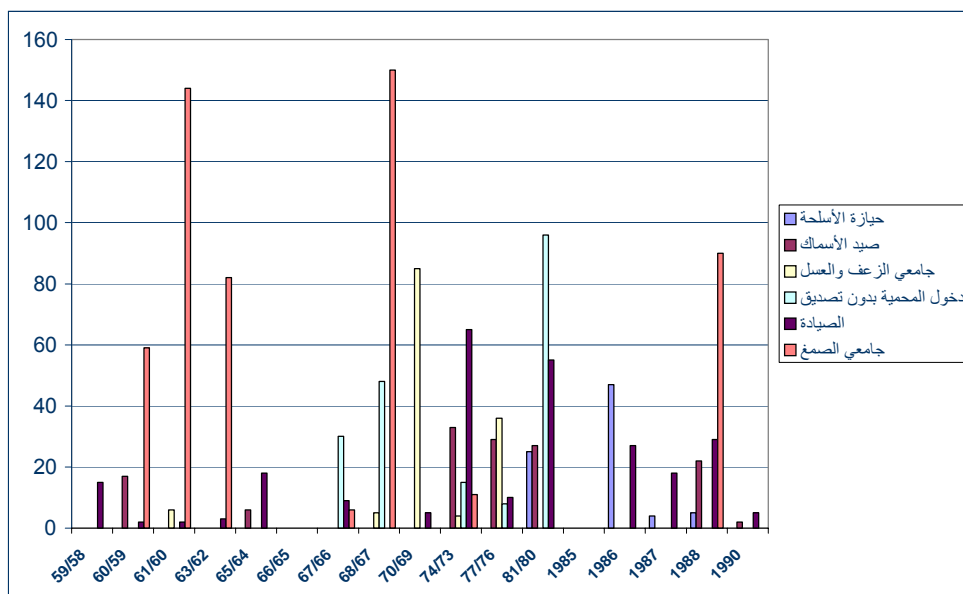
(clariuslazcra)

(Synadontus)

(T. niloticus)

(H.niloticus)

(2 - 5)



2004

:

.

/6-5

-:

:

(1999)

.

(1990)

.

.

-:

:

1972

(1975)

()

.

.

-:

/7-5

(1990)

.

.

9

17

300

500

.

(1999)

Mohamed (1980)

-: /8-5

1990

1981

(2000)

-:

-

-

(1999 1998)

-

(3-5)

-: /9-5

Dasmann (1972)

.

: /10-5

.
(2002)

-:

-

.

-

-

.

-

.

-

.

/11-5

-:

(2005)

.

(7-2)

/1

.

5

/2

(4-2)

.

(4-4)

(2005)

[]

2003

.

%62

/3

%16

(5-4)

.

/4

.

()

.

.(10-2)

-: /5

(2002)

%99

.

%23

.

(2005)

(11-3)

.

-: /6

(2005)

.

%50

%49

%6

:

.

:

-:

%19

%44

.

.

-:

: /1

.

(1) -

.

(2) -

.

(3)

.

-: /2

.

-: (2002)

/1

.
.[

] /2

- - /3

.[] .

/4

·
·
— — — ·

/5

/6

·
—

/7

·

/8

·

/9

·

/10

·

1995

: /1-6

()

)

(

1905

. 1924

1933

(1991)

13

2-4)

(7-5 4-4 9-3 5-5

.

)

(

.

(9-4 8-4 5-4,4-4)

)

.(

(2003)

-:

/1

.

:

/2

.

/3

.

(2001)

1995

2001

. (4-3,5-4)

()

:

/2-6

.

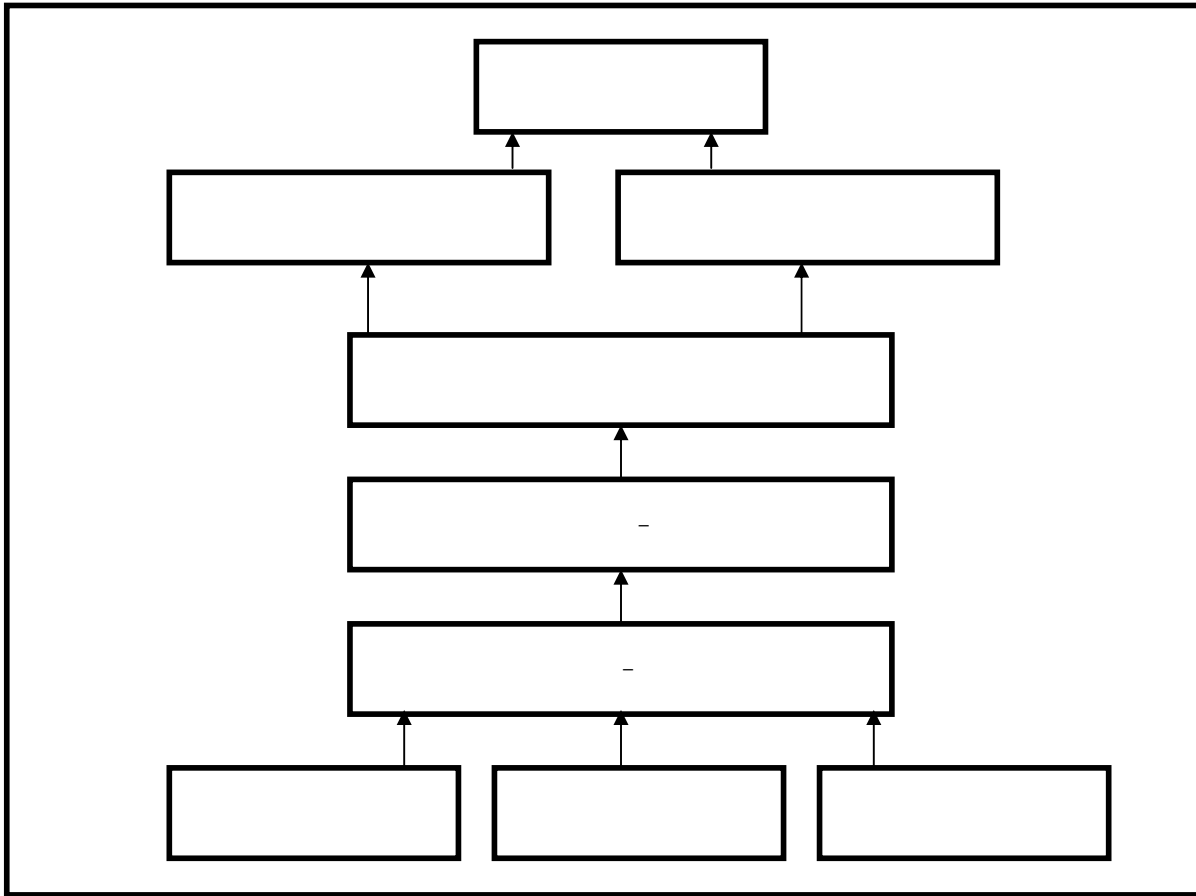
(1-6)

()

.

.

(1-6)



2005

:

: / 3-6

.

-:

.

/1

.

/2

.

/3

.

/4

.

/5

.

/6

/7

/8

/9

/10

/11

/12

/13

/14

/15

		-:	:
-	(1998)	/1	
-	(1991)	/2	
-	(1997)	/3	
-	(1984)	/4	
-	(1976)	/5	
-	(1998)	/6	
-			
-	(1995)	/7	
	(2002)	/8	
	(1984)	/9	
-	(1995)	/10	

: - (1995) /11

- (1998) /12

- (1975) /13

- (1998) /14

) - (1998) /15

- (1982) /16

- (1989) /17

- (1992) /18

- (1981) /19

- (1990) /20

-	(2001)	/21
-	(1993)	/22
	(1996)	/23
-		
-	(2000)	/24
-	(1997)	/25
	:	
-	(1996)	/26
-	(1984)	/27
-	(1989)	/28
-	(1990)	/29

- (1999) /30

- (1981) /31

- (1986) /32

- $\frac{-:}{(2002)} \quad \frac{:}{/1}$

" - (1998) /2

"
- (2002) /3

-
- (1999) /4

- (2001) /5

- (1996) /6

- (2002) /7

- (2000) /8

- (1999) /9

- (2001) /10

- $\frac{-:}{(1991)}$ /1

.

- (1993) /2

(75)

- (1993) /3

(167)

- (1994) /4

- (1984) /5

- (1992) /6

(158)

- (1994) /7

- (1991) /8

$\frac{-:}{:}$

- (2004) /1

- (2005) /2

- (2003) /3

- (2003) /4

:

: - (2002) /5

- (2002) /6

- (1986) /7

- (1995) /8

.
- (2000) /9

.
- (2003) /10

- (2002) /11

- (2002) /12

- (2001) /13

- (2000) /14

- (2001) /15

- (1992) /16

- (2001) /17

:

(107)

- (1996) /18

·
- (1995) /19

- (1999) /20

- (1991) /21

(1995) /22
-

- (1995) /23

- (1991) /24

·

- (1975) /25

- (2001) /26

$\frac{-:}{:}$
/1

(2002)

(1990) /2

(2005) /3

(2002) /4

(2002)

(1995) /5

(2005) /6

/7

(1999)

(2003) /8

	(2004)	/9
-:	<hr/>	
(2004)		/1

-	(1983)	/2
---	--------	----

	(1996)	/3
--	--------	----

-	(1990)	/4
---	--------	----

	(1998)	/5
--	--------	----

	(1999)	/6
--	--------	----

	(2001)	/7
--	--------	----

1. AB Dal Hameed, Smet. Al (1996) Assessment of wild life Habitation Dinder National park by remote sensing Techniques Al Buth journal volume, Khartoum.

2. AB Dal Hameed, S, m , A, A, Hammed, N. M, Awad,

O.A.Osman,a.l,Elmoghraby by,H. Hammed 1990-wild life Habitat Assessment, 2th scientific Research conf., ElBehousj. Vo2.

3. Bell, R. H. V. 1970-the use of the herb layer by grazing ungulates in the serengati- in A watsoned. Animal population in relation to the food resources Davisco, Philadelphia.

4. Elmoghraby etal (1985)-the Dinder National park, central Sudan, in institute of environmental studies, university of Khartoum.

5. Awad Etal N.M, O.S. Gutbi and. A. H. Mohammedan, H. Gobara(1992).-Indigenous population: case of magano population in indigenous population: case of Magano population in Dender National park.

6. Dasmann,W.P.(1972)-Development and management of the Dender national park and wild life faow.

7. Hakim,S.A.,Fadllah,N.M, Awad ands. Ab Del Whap (1978)-Ecosystems of the vegetation of Dinder National park.

8. Harrison,M,N,andjKJackson.(1958)-Ecological classification the vegetation of the Sudan, Agricultural publi. Comm-Ministry of Agriculture forest Department, forest Bull. No 2 Khartoum.

9. Ebrahim, Saad Eddin (1995–1996)-(Civil society and prospects for Democratization in the middle East) in: Augusts **11. Richard Norton,** ed: civil society in the middle East, so, 2vol cleiden, NewYork.

10. Ebrahim, t (2001)-Kinds of direct Resources offered to the people around the Dinder National park (in Arabic) Bsc. presentation Univ of Sennar.

- 11. Jeanal.Cohan** (1992)-Andrew and Arato, civil society and political theory, studies in contemporary German social Gambridye, MA: mitpress.
- 12. Johnson P.I.**(1978) management strategies for dryland: available optioninj. Amabbatced ,proceedings of the Khartoum workshop on arid land management, the Unitednation university Tokyo.
- 13. Suleiman, Sad.** (1986)-the Effect of competition between wild life and domestic livestock in natural range land of the Dinder National park (unpublished m.sc thesis) institute of environmental studies, university of Khartoum.
- 14. Marx, K** (1967)-capital (international New York)
- 15. Mohammed, A. S.**(1980) about break of rind pasting Dinder National park. W. R. C.(unpublpaper).
- 16. Nazihn.**(1995)-Ayubi,overstating the Arab state: politics and society in the middle East, London: NewYork: I Btavis.

بسم الله الرحمن الرحيم

كلية الدراسات العليا

(1)

-

-:

.

.

.....:

.....:

.....

: _____ :

) / () / -1

(

-:

-2

) / () / -3

(

..... -4

..

/ () / -5

()

/1 -6

()

$$\begin{array}{rcl}
 \dots & /3 & (\quad) \\
 & & /2 \\
 & & \dots\dots\dots \\
 & & -7 \\
 & : & \\
 /3 (\quad) & & /2 (\quad) \quad /1 \\
 & & \dots\dots\dots : \\
 / (\quad) & / & -8 \\
 & & (\quad) \\
 & & -9 \\
 & : & \\
 /3(\quad) & /2 (\quad) & /1 \\
 & & \dots\dots\dots :
 \end{array}$$

:

:

$$\left(\quad \right) / \left(\quad \right) / -1$$

-2

$$\left(\quad \right) / \left(\quad \right) / -3$$

$$/3 \left(\quad \right) /2 \left(\quad \right) /1 -4$$

.....

$$\left(\quad \right) /2 \left(\quad \right) /1 -5$$

(

$$..... /5 \left(\quad \right) /4 \left(\quad \right) /3$$

.

$$\left(\quad \right) /1 -6$$

$$.. /4 \left(\quad \right) /3 \left(\quad \right) /2$$

.....

:

-7

$$..... /3 /2 \left(\quad \right) /1$$

$$\left(\quad \right) / \left(\quad \right) / -8$$

(

$$\left(\quad \right) /1 -9$$

$$..... /4 \left(\quad \right) /3 \left(\quad \right) /2$$

...

$$\left(\quad \right) /1 : -10$$

$$... /3 \left(\quad \right) /3 \left(\quad \right) /2$$

...

$$\left(\quad \right) /1 : -11$$

$$/4 \left(\quad \right) /3 \left(\quad \right) /2$$

.....

$$\begin{array}{rcl} & & : \\ (\quad) / (\quad) / & & -1 \\ & : & -2 \end{array}$$

$$\begin{array}{rcl} & : & -3 \\ & -4 & \\ \dots\dots\dots /3 (\quad) & /2 (\quad) & /1 \\ (\quad) & /1 & -4 \\ \dots\dots\dots /3 (\quad) & /2 & \\ \dots\dots\dots & -5 & \\ (\quad) & /1 & -6 \\ \dots\dots\dots /3 (\quad) & /2 & \\ /1 & -7 & \\ & \dots\dots & /2 \end{array}$$

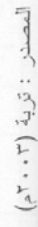
$$\begin{array}{rcl} & : & -8 \\ \begin{array}{|c|c|c|c|} \hline & & & \\ \hline & & & \\ \hline & & & \\ \hline \end{array} & & \end{array}$$

$$\begin{array}{rcl} (\quad) / (\quad) / & & -9 \\) & /2 (\quad) /1 : & -10 \\ & (& \\ \dots\dots\dots /4 (\quad) & /3 & \\ /2 (\quad) & /1 & -11 \\ & (\quad) & \\ & \dots\dots\dots /3 & \\ & : & : \end{array}$$

			:	-1
/2	()	/1		-2
			()	
	/4	()	/3
/3 ()	/2 ()	/1		-3
			()	
	:		:	
()	/	()	/	-1
)	/2 ()	/1		-2
			(
	/5 ()	/4 ()	/3	
			()	
()	/1			-3
.....	/4 ()	/3 ()	/2	
			
()	/1			-4
	/3 ()	/2	
.	/2 ()	/1		-5
			
/	()	/	/6	
			()	
	()	/1		-7
.....	/3 ()	/2		
	()	/1		-8
.....	/3 ()	/2		
()	/	()	/	-9

/ () /	-10
()	
/2 () /1	-11
)	
..... /3	
) / () /	-12
(
() /1 :	-13
/4 /3 () /2	
.....	
() / () /	-14
/2 () /1 :	-15
()	
..... /3	
/ () /	-16
()	
/1	-17
()	
..... /5 () /4 () /3 () /2	
.....	
-18	
..... /3 () /2 () /1	
.....	
-19	
() /3 () /2 () /1	
..... /4	
.....	-20
.....	

ملحق رقم (۲)



()

(3)

رقم	النشاط	تاريخ التنفيذ	القرية	الولاية	المستفيد رجال	نساء	التد
.1		.2-			70	80	000
.2		. 2-					000
.3		. 2-				11	000
.4		. 2-				15	000
.5		. 2-				1	000
.6		. 2-					500
.7		. 2-					000
.8		. 2-			2		000
.9		. 2-				11	000
.10		. 2-			11		000
.11		2002					000
.12		2002			60	70	000
.13		2002					000
.14		2002			13	10	000
.15		2002					000
.16		2002					000
.17		2002			1		000
.18		.3-			4		000
.19		.3-			1		000
.20		.3-			1		000
.21		.3-			2		000
.22		.3-			2		000
.23		.3-			2		000
.24		.3-					000
.25		.3-				3	000
.26		.3-				2	000
.27		.3-					000

000	50				.3-		.28
000	5	10			.3-		.29
000	14				.3-		.30
000		2			.3-		.31
000					2005		.32
550					2005		.33
000					2005		.34
000					2005		.35
000					2005		.36
000					2005	" "	.37
050							.38

()

(4)

رقم	النشاط	تاريخ التنفيذ	القرية	الولاية	المستفيد رجال	نساء	التكلفة با
.1		.2-			5		75.000
.2		.2-				5	50.000
.3		.2-			5		50.000
.4		.2-			5		00.000
.5		.2-					50.000
.6		.2-					50.000
.7		.2-				5	50.000
.8		2003			12	10	30.000
.9		2003					00.000
.10		2003					00.000
.11		2003					00.000
.12		.3-			3		77.000
.13		.3-				1	21.500
.14		.3-			4		00.800
.15		.3-			1		21.000
.16		.3-			1		45.000
.17		.3-			1		30.000
.18	+	2003					00.000
.19	+	2003					91.400
.20	()	2003					00.000
.21							41.400

()

(5)

رقم	النشاط	تاريخ التنفيذ	القرية	الولاية	المستفيد رجال	نساء	
.1		.3-)
.2		.3-)
.3		.3-)
.4		.3-)
.5		.3-)
.6		.3-			12	8)
.7	+	.3-					;
.8		2003)
.9		2003)
.10		2003)
.11		2005)
.12		2005)
.13		2005)
.14		2005			10)
.15		2005			7)
.16							;

(6)

رقم	الحلقة التدريبية	الجهة المستهدفة
.1		
.2		30
.3		20
.4	()	21
.5	()	25
.6		22
.7	(1)	30
.8	(2)	20
.9		34
.10		45
.11		45
.12	"4"	45
.13		19
.14		19
.15		40
.16		38
.17		50
.18		42

21			.19
-			.20
-			.21
-			.22
-			.23
507			.24

2005 :

(7)

