

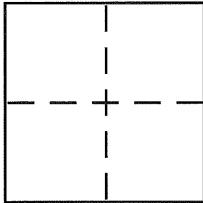
CORNER RECORD

BK 32 Pg 55

Document Number CR 3634

City of SAN LEANDRO County of ALAMEDA, California

Brief Legal Description INTERSECTION OF MANOR ST AND KESTERSON ST.



CORNER TYPE

Government Corner ☐ Control ☐
 Meander ☐ Property ☐
 Rancho ☐ Other ☒
 Date of Survey Aug 2007

COORDINATES (Optional)

N. _____
 E. _____
 Zone _____ NAD27 ☐ NAD83 ☐
 NAD83 Epoch _____
 Elev. _____
 Vert. Datum: NGVD29 ☐ NAVD88 ☐
 Meas. Units: Metric ☐ Imperial ☐

Corner - Left as found ☒ Found and tagged ☐ Established ☐ Reestablished ☐ Rebuilt ☐

Identification and type of corner found: Evidence used to identify or procedure used to establish or reestablish the corner:

FOUND SAN LEANDRO STANDARD CITY MONUMENT AS SHOWN.
SET LEAD TACKS TAGGED LS 5399 AS SHOWN

A description of the physical condition of the monument as found and as set or reset:

SURVEYOR'S STATEMENT

This Corner Record was prepared by me or under my direction in conformance with

the Land Surveyor's Act on December 30 2008

Signed Frank C. Belloci P.L.S. or R.C.E. No. PLS 5399

COUNTY SURVEYOR'S STATEMENT

This Corner Record was received 2-5-09

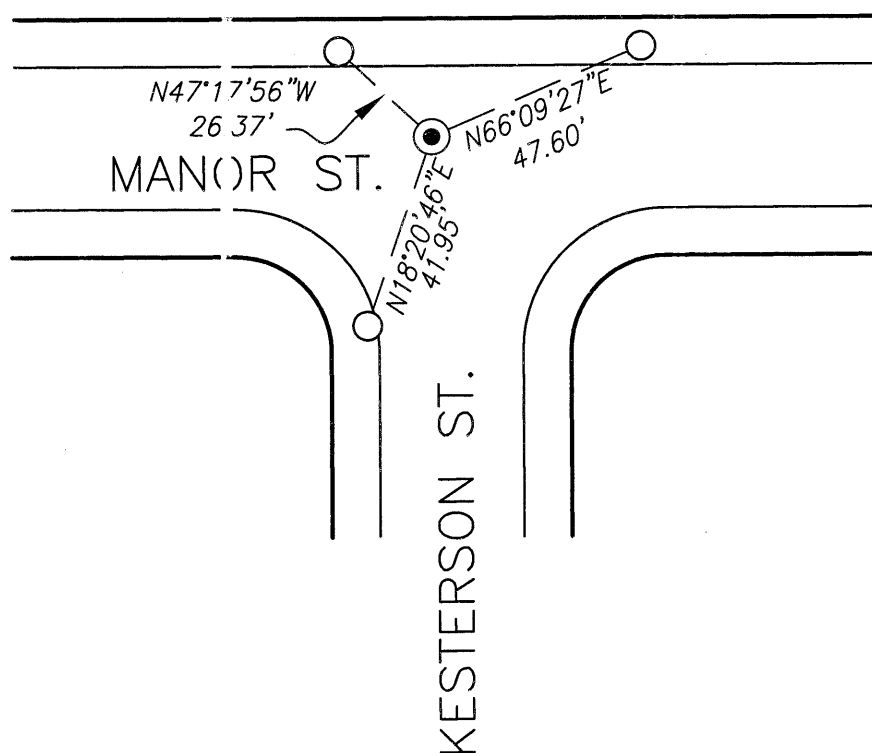
and examined and filed 3-8-09

Signed Russell R. Penland Jr. P.L.S. or R.C.E. No. 5399

Title COUNTY SURVEYOR

County Surveyor's Comment _____





SCALE 1" = 40'

LEGEND

- FOUND CONCRETE STREET MONUMENT
PER TRACT 814 8 M 88
- SET LEAD AND TACK TAGGED LS 5399
- (M-M) MONUMENT TO MONUMENT DISTANCE
- RIGHT OF WAY
- FACE OF CURB