

FILED IN THE OFFICE OF THE COUNTY CLERK OF THE COUNTY OF MONO, STATE OF CALIFORNIA,
THIS 2nd DAY OF Sept., 1975.

Ann M. Webb
ANN M. WEBB
COUNTY CLERK
COUNTY OF MONO
STATE OF CALIFORNIA.

RECORDED IN THE OFFICE OF THE COUNTY SURVEYOR OF THE COUNTY OF MONO, STATE OF CALIFORNIA,
THIS 22d DAY OF September, 1975.

Richard L. Pool
RICHARD L. POOL
COUNTY SURVEYOR
COUNTY OF MONO
STATE OF CALIFORNIA.

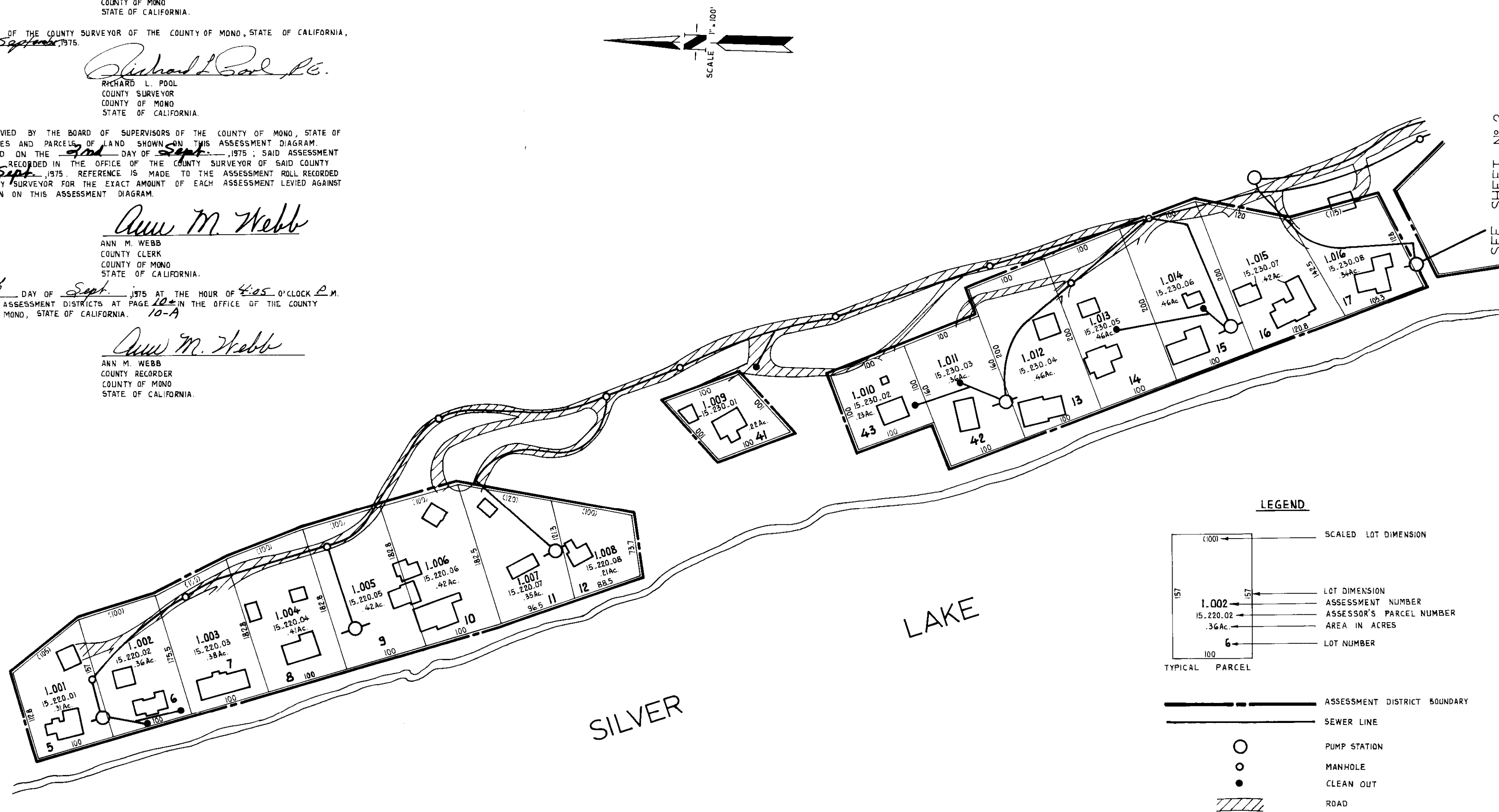
AN ASSESSMENT WAS LEVIED BY THE BOARD OF SUPERVISORS OF THE COUNTY OF MONO, STATE OF CALIFORNIA, ON THE LOTS, PIECES AND PARCELS OF LAND SHOWN ON THIS ASSESSMENT DIAGRAM. SAID ASSESSMENT WAS LEVIED ON THE 2nd DAY OF Sept., 1975; SAID ASSESSMENT DIAGRAM AND THE ROLL WERE RECORDED IN THE OFFICE OF THE COUNTY SURVEYOR OF SAID COUNTY ON THE 2nd DAY OF Sept., 1975. REFERENCE IS MADE TO THE ASSESSMENT ROLL RECORDED IN THE OFFICE OF THE COUNTY SURVEYOR FOR THE EXACT AMOUNT OF EACH ASSESSMENT LEVIED AGAINST EACH PARCEL OF LAND SHOWN ON THIS ASSESSMENT DIAGRAM.

Ann M. Webb
ANN M. WEBB
COUNTY CLERK
COUNTY OF MONO
STATE OF CALIFORNIA.

No. 1124

FILED THIS 16th DAY OF Sept., 1975 AT THE HOUR OF 4:05 O'CLOCK P.M.
IN BOOK 7 OF MAPS OF ASSESSMENT DISTRICTS AT PAGE 10-A IN THE OFFICE OF THE COUNTY RECORDER OF THE COUNTY OF MONO, STATE OF CALIFORNIA.

Ann M. Webb
ANN M. WEBB
COUNTY RECORDER
COUNTY OF MONO
STATE OF CALIFORNIA.



PREPARED BY
STONE & YOUNGBERG
MUNICIPAL FINANCING CONSULTANTS, INC.
SAN FRANCISCO, CALIFORNIA.

GRAM / PHILLIPS ASSOCIATES, INC.
MAMMOTH LAKES, CALIFORNIA.
Sheet 1 of 2

ASSESSMENT DIAGRAM
MONO COUNTY - JUNE LAKE ASSESSMENT DISTRICT NO 3
SANITARY SEWERAGE PROJECT
MONO COUNTY, CALIFORNIA.