

# PREGHIERA PER UN' OMBRA

3

pour clarinette sib solo

en sib

Giacinto SCELSI

$\text{♩} = 84$

*mp* *f* *mp* *f* *mp*

*p* *mf* *mf* *mf*

*string. al*  $\text{♩} = 96$

(ten.) (a tempo)

*f* *mf* *mp*

*mf* *f*

*mf* *p* *f*

(f) *p* *f*

*p* *mp*

*poco rit.*  $\text{♩} = 96$  *a tempo*

*p* *f* *non troppo* *poco rit.* *mp*



Handwritten musical notation on a single staff. It begins with a treble clef and a key signature of one sharp (F#). The music features several triplet markings (indicated by a '3' over a bracket) and dynamic markings including *f* (forte) and *mp* (mezzo-piano). The notation includes eighth and sixteenth notes, some beamed together, and rests.

Handwritten musical notation on a single staff. It continues the piece with dynamic markings *f*, *mf* (mezzo-forte), and *p* (piano). There are triplet markings and a crescendo hairpin leading into a *mf* section.

Handwritten musical notation on a single staff. It starts with a *mp* marking and includes triplet markings. A crescendo hairpin leads into a *f* section, followed by a *mp* section.

Handwritten musical notation on a single staff. It includes the instruction *3 appena rit.* (3 just a little ritardando) and a *p* marking. A tempo change is indicated by *a tempo* at the end of the staff.

Handwritten musical notation on a single staff. It features a *5* (quint) fingering and a *movendo al* instruction. A crescendo hairpin leads into a *più p* (più piano) section. The tempo is marked as *♩ = 112*.

Handwritten musical notation on a single staff. It includes a *5* fingering and dynamic markings *f* and *mp*. A crescendo hairpin leads from *f* to *mp*.

Handwritten musical notation on a single staff. It features triplet markings and dynamic markings *f*, *mp*, *p* (piano), and *mf* (mezzo-forte). A crescendo hairpin leads from *f* to *mp*, and another from *p* to *mf*.

Handwritten musical notation on a single staff. It includes triplet markings and a *mp* marking. A crescendo hairpin leads into the *mp* section.

Handwritten musical notation on a single staff. It features a *sol!* (solo!) marking above a circled note. Dynamic markings include *p*, *f*, *mp*, *p*, and *mf*. A crescendo hairpin leads from *p* to *f*, and another from *p* to *mf*.

Handwritten musical notation on a single staff. It starts with a *p* marking, followed by a crescendo hairpin leading to *mp*, and another crescendo hairpin leading to *mf*.



Handwritten musical notation on a single staff. It begins with a treble clef and a key signature of one flat (B-flat). The music features a series of eighth and sixteenth notes, some beamed together in groups of three. Dynamic markings include *f* (forte) and *f* (forte). There are also some slurs and accents.

Handwritten musical notation on a single staff. It begins with a treble clef and a key signature of one flat. Above the staff, it says "Tempo I (♩ = 84)". The music continues with eighth and sixteenth notes. Dynamic markings include *mp* (mezzo-piano) and *sf* (sforzando).

Handwritten musical notation on a single staff. It begins with a treble clef and a key signature of one flat. Above the staff, it says "p sub. e cresc.". The music features eighth and sixteenth notes. Dynamic markings include *f* (forte) and *mf* (mezzo-forte). There is a "riten." (ritardando) marking followed by "molto".

Handwritten musical notation on a single staff. It begins with a treble clef and a key signature of one flat. Above the staff, it says "a tempo (♩ = 84)". The music continues with eighth and sixteenth notes. Dynamic markings include *f* (forte), *p* (piano), and *mf* (mezzo-forte).

Handwritten musical notation on a single staff. It begins with a treble clef and a key signature of one flat. The music features eighth and sixteenth notes. Dynamic markings include *mp* (mezzo-piano), *f* (forte), and *p* (piano).

Handwritten musical notation on a single staff. It begins with a treble clef and a key signature of one flat. The music features eighth and sixteenth notes. Dynamic markings include *sf* (sforzando), *p* (piano), *f* (forte), *mf* (mezzo-forte), and *p* (piano).

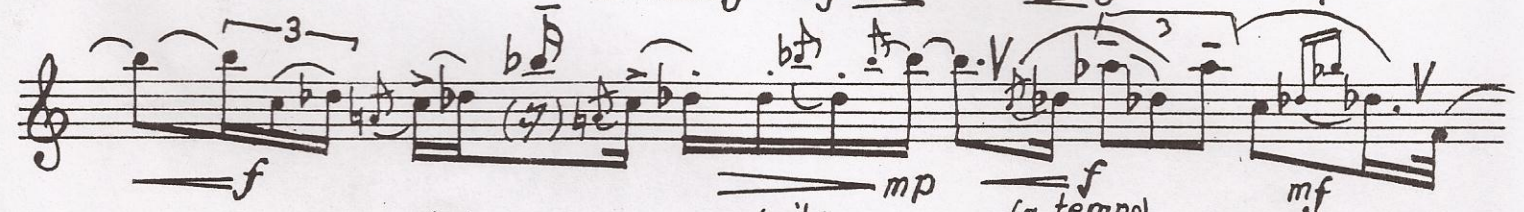
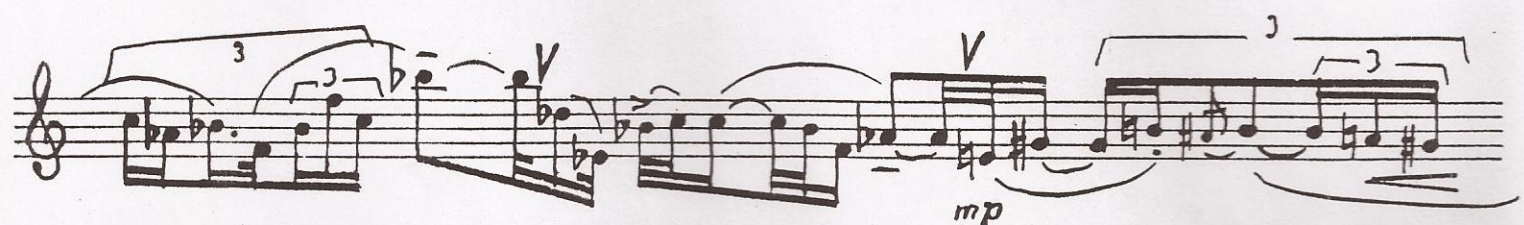
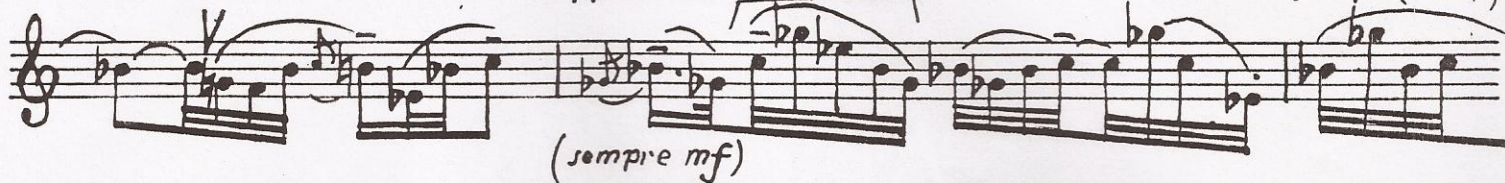
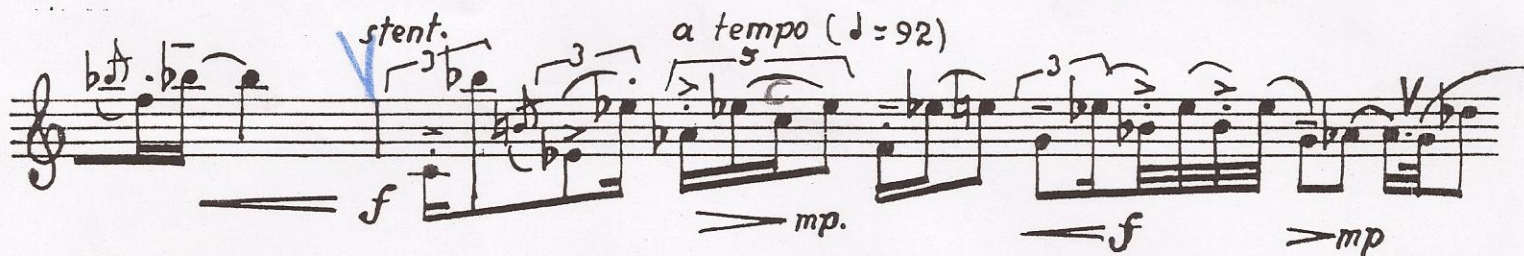
Handwritten musical notation on a single staff. It begins with a treble clef and a key signature of one flat. The music features eighth and sixteenth notes. Dynamic markings include *f* (forte), *sf* (sforzando), *p* (piano), *sf* (sforzando), *mp* (mezzo-piano), and *ff* (fortissimo).

Handwritten musical notation on a single staff. It begins with a treble clef and a key signature of one flat. The music features eighth and sixteenth notes. Dynamic markings include *sf* (sforzando), *mp* (mezzo-piano), *f* (forte), and *mp* (mezzo-piano).

Handwritten musical notation on a single staff. It begins with a treble clef and a key signature of one flat. Above the staff, it says "poco riten. al" and "♩ = 92". The music continues with eighth and sixteenth notes. Dynamic markings include *f* (forte), *mf* (mezzo-forte), and *f* (forte).

Handwritten musical notation on a single staff. It begins with a treble clef and a key signature of one flat. The music features eighth and sixteenth notes. Dynamic markings include *mp* (mezzo-piano) and *f* (forte).







Handwritten musical score for a single melodic line, featuring various dynamics, articulations, and a tempo change.

**Staff 1:** *mf* *f* *sf* *p* *f*

**Staff 2:** *mp* *f non troppo*

**Staff 3:** *f* *meno f* *cresc.*

**Staff 4:** *ff*

**Staff 5:** *Tempo I (♩ = 84)* *mp* *f* *mf*

**Staff 6:** *p*

**Staff 7:** *mp* *f*

**Staff 8:** *mp*

**Staff 9:** *f* *pp* *f* *p* *mf*

The score is written on nine staves. It includes various musical notations such as slurs, ties, and articulation marks. Dynamics range from *pp* (pianissimo) to *ff* (fortissimo). A tempo change to *Tempo I* is indicated on the fifth staff with a tempo of  $\text{♩} = 84$ . The key signature changes from one sharp (F#) to one flat (Bb) between the second and third staves.



Handwritten musical score on ten staves, featuring various musical notations, dynamics, and performance instructions.

**Staff 1:** *mp* *riprende il* *tempo* ( $\text{♩} = 84$ ) *p* *mp*

**Staff 2:** *f* *mf dimin.*

**Staff 3:** *affrettando al* *ppp* *pp* *ppp* (poco rit.)

**Staff 4:** *mf* *cresc.* *f*

**Staff 5:**  $\text{♩} = 120$  *molto f*

**Staff 6:** *(7)*

**Staff 7:** *(7)*

**Staff 8:** *(7)*

**Staff 9:** *(7)*

**Staff 10:** *(7)*

The score includes various musical notations such as treble clefs, key signatures (one flat), time signatures, and complex rhythmic patterns. Dynamics range from *ppp* to *molto f*. Performance instructions include *affrettando al*, *tempo*, *poco rit.*, and *cresc.*. The piece concludes with a final cadence on the tenth staff.



Handwritten musical notation on a single staff. It begins with a treble clef and a key signature of one flat (B-flat). The music features a series of eighth and sixteenth notes, some beamed together. There are several triplet markings (indicated by a '3' over a bracket) and a blue 'V' marking. The staff ends with a double bar line and a repeat sign.

Handwritten musical notation on a single staff. It continues the piece with various note values and rests. A blue 'V' marking is present. Dynamics include *ff* (fortissimo) and *p* (piano). There are triplet markings and a five-measure rest.

Handwritten musical notation on a single staff. It features a five-measure rest followed by eighth and sixteenth notes. Dynamics include *mf* (mezzo-forte), *f* (forte), and *p* (piano). There are triplet markings and a blue 'V' marking.

Handwritten musical notation on a single staff. It includes a five-measure rest and various note values. Dynamics include *p* (piano), *piu f* (pizzicato forte), *f* (forte), and *ff* (fortissimo). There are triplet markings and a blue 'V' marking.

Handwritten musical notation on a single staff. It features eighth and sixteenth notes with various articulations. There are triplet markings and a blue 'V' marking.

Handwritten musical notation on a single staff. It includes eighth and sixteenth notes. Dynamics include *ff* (fortissimo). There are triplet markings and a blue 'V' marking.

Handwritten musical notation on a single staff. It features eighth and sixteenth notes. Dynamics include *mf* (mezzo-forte), *ff* (fortissimo), and *meno f* (meno forte). There are triplet markings and a blue 'V' marking.

Handwritten musical notation on a single staff. It includes eighth and sixteenth notes. Dynamics include *ff* (fortissimo). There are triplet markings and a blue 'V' marking. The staff ends with a dashed line and the text "riten. al".

Handwritten musical notation on a single staff. It begins with a treble clef and a key signature of one flat. The tempo is marked as *♩ = 96*. The music features eighth and sixteenth notes. Dynamics include *p* (piano) and *f* (forte). There are triplet markings.

Handwritten musical notation on a single staff. It continues the piece with eighth and sixteenth notes. There are triplet markings.



Handwritten musical score on ten staves, featuring various musical notations including dynamics, articulation, and performance instructions.

**Staff 1:** *mf*, *p* *leggero*, *mp*

**Staff 2:** *sf*, *sf>p*

**Staff 3:** *f*, *mp*

**Staff 4:** *sf p*, *leggero p*

**Staff 5:** *f*, *mf*, *sf>*, *f*

**Staff 6:** *mp*, *p*, *mp*, *sf>mf*, *p*, *f>*, *p-f>*

**Staff 7:** *mf*, *p*, *sf*, *mf*, *poco string.* (3), (senza cresc.)

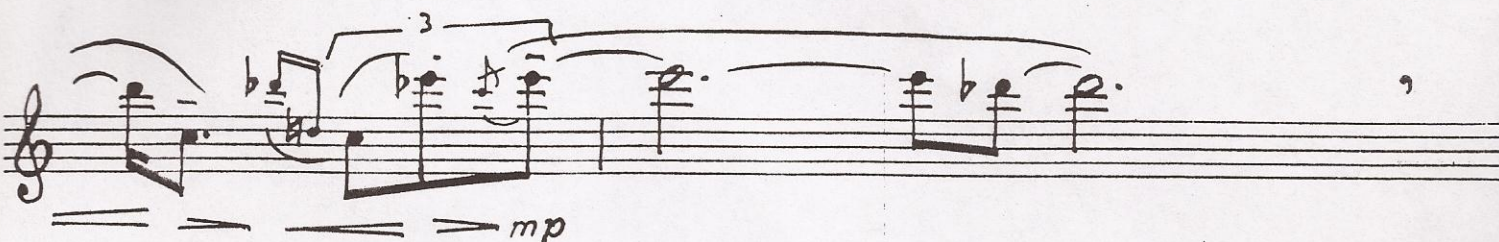
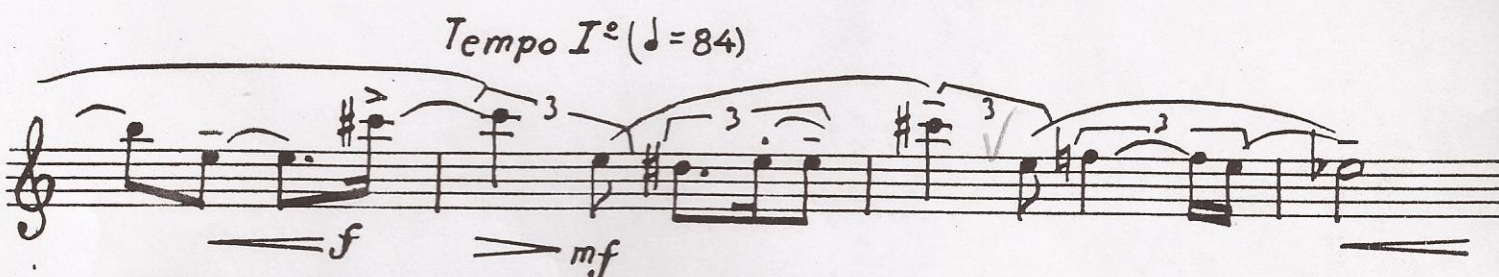
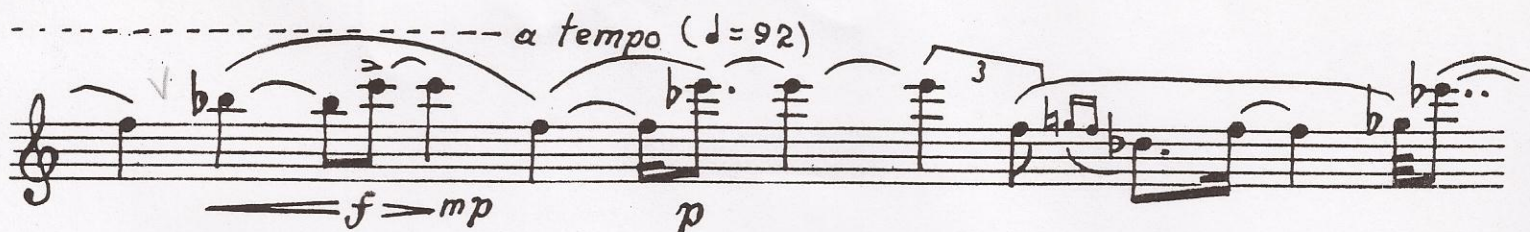
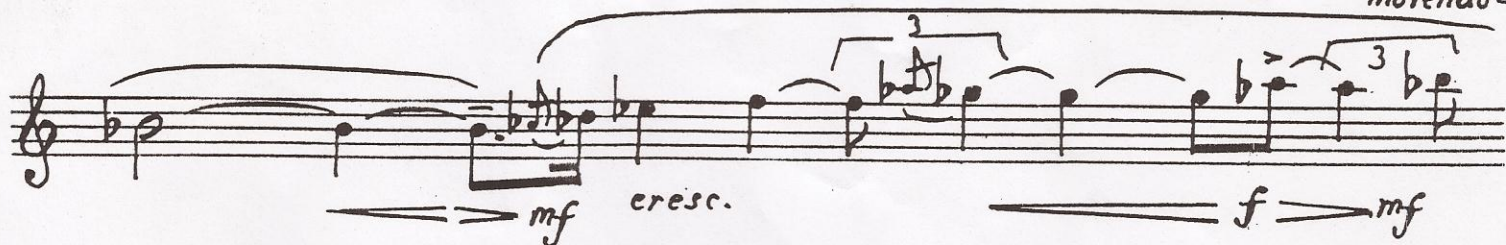
**Staff 8:** *a tempo*, *f*, *sf*, *mp*, *f*, *mp*

**Staff 9:** *mp*

**Staff 10:** *Pochissimo meno* ( $\text{♩} = 92$ ), *f*, *mp*



movendo-





mf cresc. f mf

a tempo (♩ = 92)

f mp p

poco mp p mp

mp

Tempo I<sup>e</sup> (♩ = 84)

f mf

p ff mp

mp

p pp pp