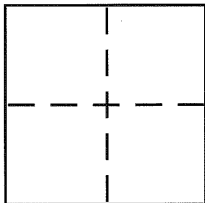


CORNER RECORD

Document Number CR 2578

City of CITY OF OAKLAND County of ALAMEDA, California

Brief Legal Description RECORD OF SURVEY NO. 1452 (21 RS 38)



CORNER TYPE

Government Corner ☐ Control ☐
 Meander ☐ Property ☒
 Rancho ☐ Other ☐
 Date of Survey OCT. 4, 2005

COORDINATES (Optional)

N. _____
 E. _____
 Zone _____ NAD27 ☐ NAD83 ☐
 NAD83 Epoch _____
 Elev. _____
 Vert. Datum: NGVD29 ☐ NAVD88 ☐
 Meas. Units: Metric ☐ Imperial ☐

Corner - Left as found ☐ Found and tagged ☐ Established ☒ Reestablished ☐ Rebuilt ☐

Identification and type of corner found: Evidence used to identify or procedure used to establish or reestablish the corner:

FOUND CONCRETE MONUMENT PER (21 RS 38)

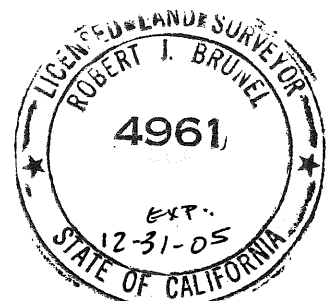
A description of the physical condition of the monument as found and as set or reset:

SET 5/8" REBAR WITH PLASTIC CAP, W 4961

SURVEYOR'S STATEMENT

This Corner Record was prepared by me or under my direction in conformance with the Land Surveyor's Act on OCTOBER 24, 2005.

Signed Robert J. Brunel P.L.S. or R.C.E. No. 4961



COUNTY SURVEYOR'S STATEMENT

This Corner Record was received 10.25.05 and examined and filed 12.02.05

Signed Russell R. Penland P.L.S. or R.C.E. No. 5726

Title COUNTY SURVEYOR

County Surveyor's Comment _____

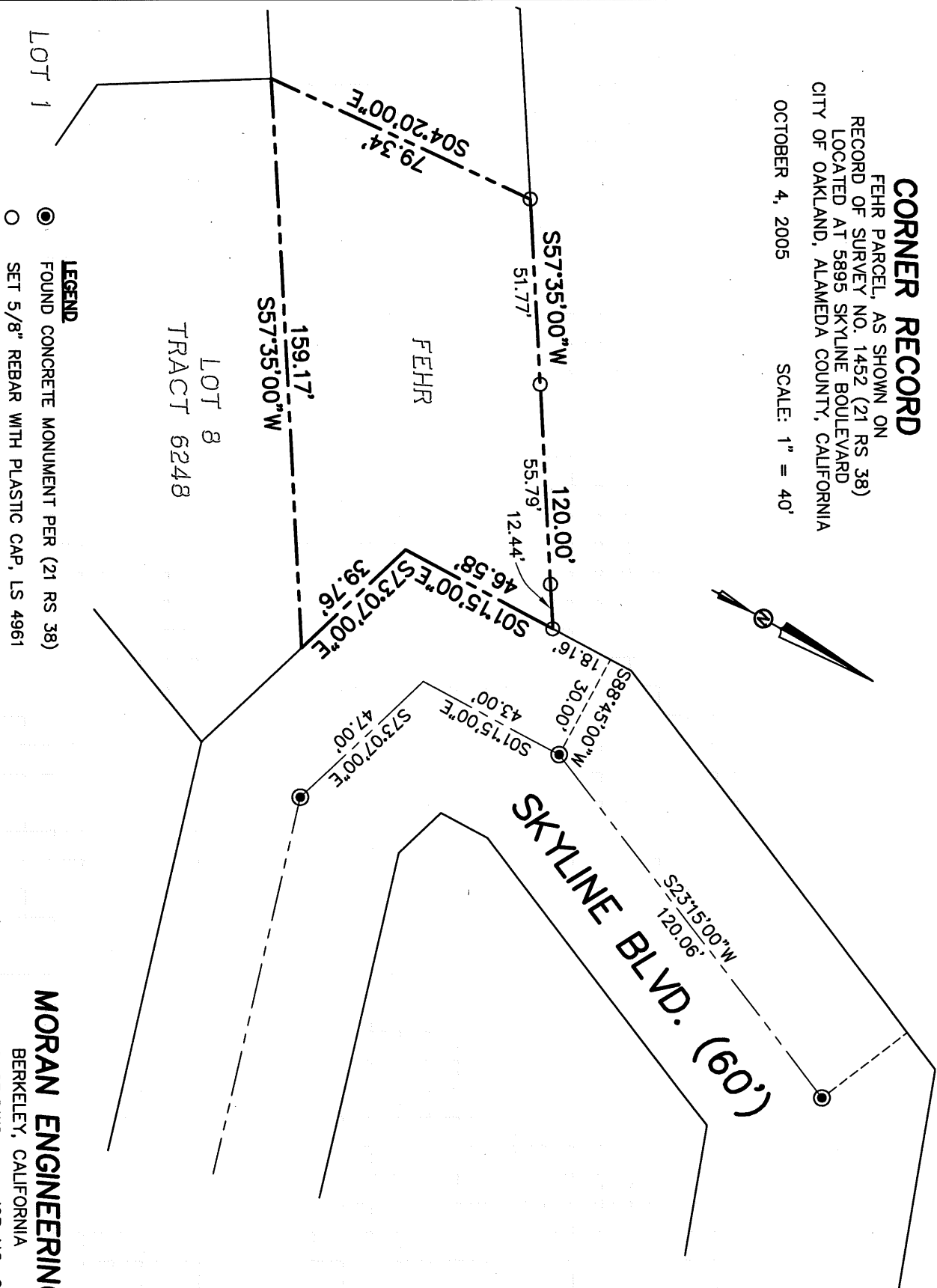
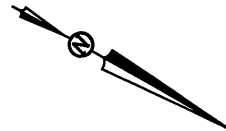


CORNER RECORD

FEHR PARCEL, AS SHOWN ON
RECORD OF SURVEY NO. 1452 (21 RS 38)
LOCATED AT 5895 SKYLINE BOULEVARD
CITY OF OAKLAND, ALAMEDA COUNTY, CALIFORNIA

OCTOBER 4, 2005

SCALE: 1" = 40'



LEGEND

- FOUND CONCRETE MONUMENT PER (21 RS 38)
- SET 5/8" REBAR WITH PLASTIC CAP, LS 4961

MORAN ENGINEERING

BERKELEY, CALIFORNIA

SKYLINE FEHR CR.DWG

JOB NO. 05-2852